

SERVICE

HSF2202/12-1C-2C

Thank you for choosing a Hydrotech filter.

It is a reliable machine that will run for a long time with minimum care and service. Indeed, any mechanical equipment requires annual maintenance in order to operate efficiently and with as little down time as possible. This is also the case with your Hydrotech Discfilter HSF2202/12, 1C or 2C.

On the next pages, you will find recommendations for maintenance, parts to change and drawings.

If you don't have the possibility to do the maintenance yourself, Hydrotech will be pleased to send you a service offer or recommend a reliable technician that can assist you.

Apart from the periodic maintenance mentioned in the **Operation & Maintenance manual** we recommend a large service every fifth year where at least all parts in the **5 year service kit** are replaced.

To order spare parts or a service from Hydrotech and also to get the latest updated prices, contact Hydrotech.

SERVICE

HSF2202/12-1C-2C

5 year service kit

Art. N°	N° on drawing	Description	Qty	Version
424040	5856-B pos.10	Key steel 22x14x45 mm	1	
1004130	5856-B pos.6	O-sealing 79,5x3.0 EPDM	2	
1004125	5856-B pos.9	Lock ring Ø122x2.5	2	
1003467	5856-B pos.8	Roller bearing INA SL01 4916A	2	
1006083	5856-B pos.7	Shaft sealing radial 90x110x8	4	
1020529	5856-B pos.3	Pulley for spraybar drive	1	
1021141	5860-C pos.10	Belt pulley to backwash header	1	
1006351	5860-C pos.9	Belt, moving back wash header	1	
1000808	5860-C pos.7	Bearing for spray water pipe	1	
1012730	5860-C pos.3	Swivel connection, 2"	1	
1010967	On spray bar	Manometer 0-16 bar 1/4" SI	1	
1008197	5860-C pos.8	Bearing bracket spray bar	1	Only HSF2212
1007999	20447-A pos.1	Rubber lip seal HSF1700	1	
426355	4665-A	Support wheel type 9	2	
420380	5943-B pos.4	Chain wheel 1 1/4" 10, Ø45H7	1	
420140	5943-B pos.8	Chain lock 1 1/4"	1	
1001275	5943-B pos.6	Cone to chain wheel 3020-Ø80	1	

Parts only valid for 1C tank version

Art. N°	N° on drawing	Description	Qty
1021218	5943-B pos.7	Chain 1 1/4" Rex simplex	1
1001271	5943-B pos.5	Chain wheel Z=32 1 1/4"	1

Parts only valid for 2C frame version

Art. N°	N° on drawing	Description	Qty
1021722	20161-A pos.8	Chain 1 1/4" Rex simplex	1
1011915	20161-A pos.6	Chain wheel Z=32 1 1/4"	1

SERVICE

HSF2202/12-1C-2C

Strategic spare parts

Art. N°	N° on drawing	Description	Qty	Version
	5860-C pos.11	Backwash nozzles	14/disc	
	5840-C pos.12	Filter panel, with seal	28/disc	
	5856-B pos.1	Drum shaft	1	Only -1C tank version
	20160-A pos.1	Drum shaft	1	Only -2C frame version
	5856-B pos.2	Bearing house	1	Only -1C tank version
	20160-A pos.2	Bearing house	1	Only -2C frame version

Critical spare parts

Art. N°	N° on drawing	Description	Qty
		Backwash pump	1
		Drive gear/motor	1

Definitions:

5 year service kit:

Parts to be changed after 5 years of operation

Strategic spare parts:

Parts with short lead time (always on Hydrotech stock) which are vital for the operation of the unit.

Critical spare parts:

Parts with long lead time which are vital for the operation of the unit, contact Hydrotech for precise delivery time.

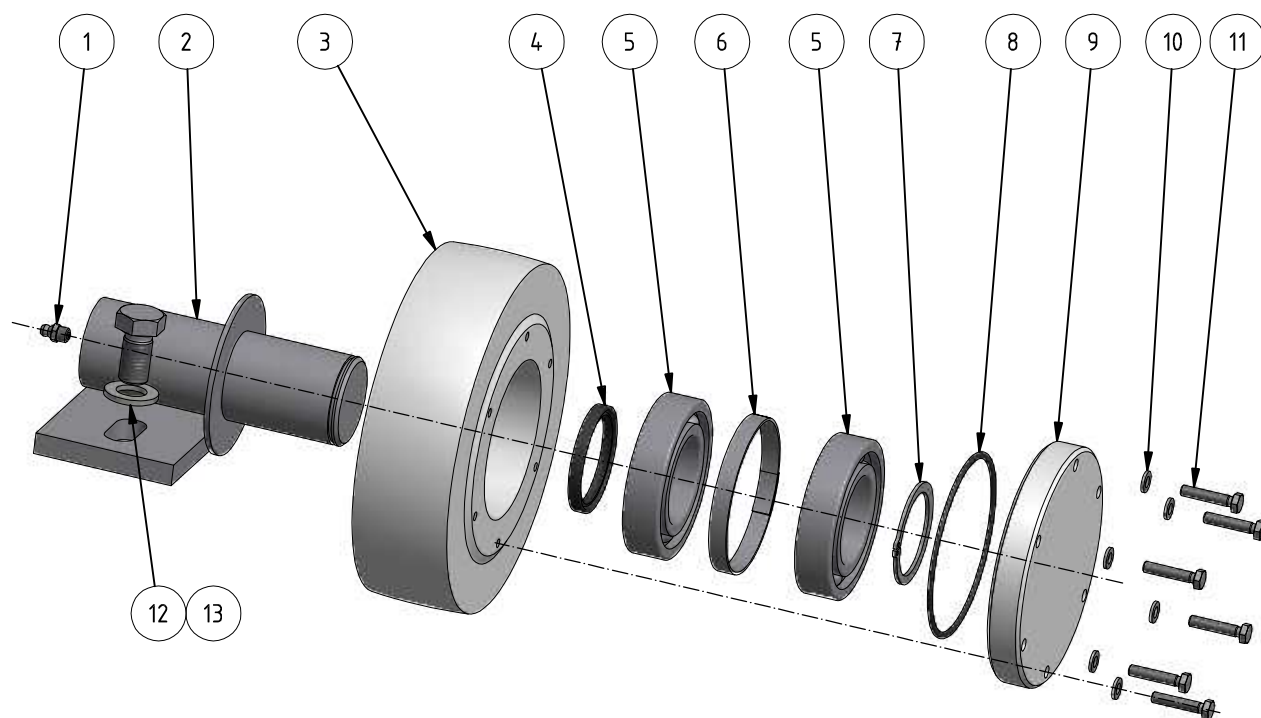
Ed.

Change and/or message no.

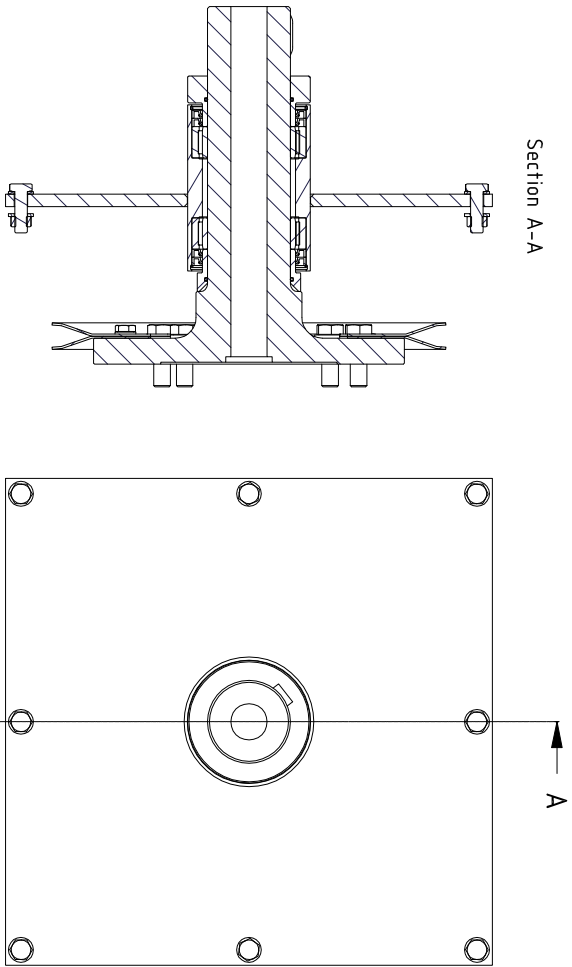
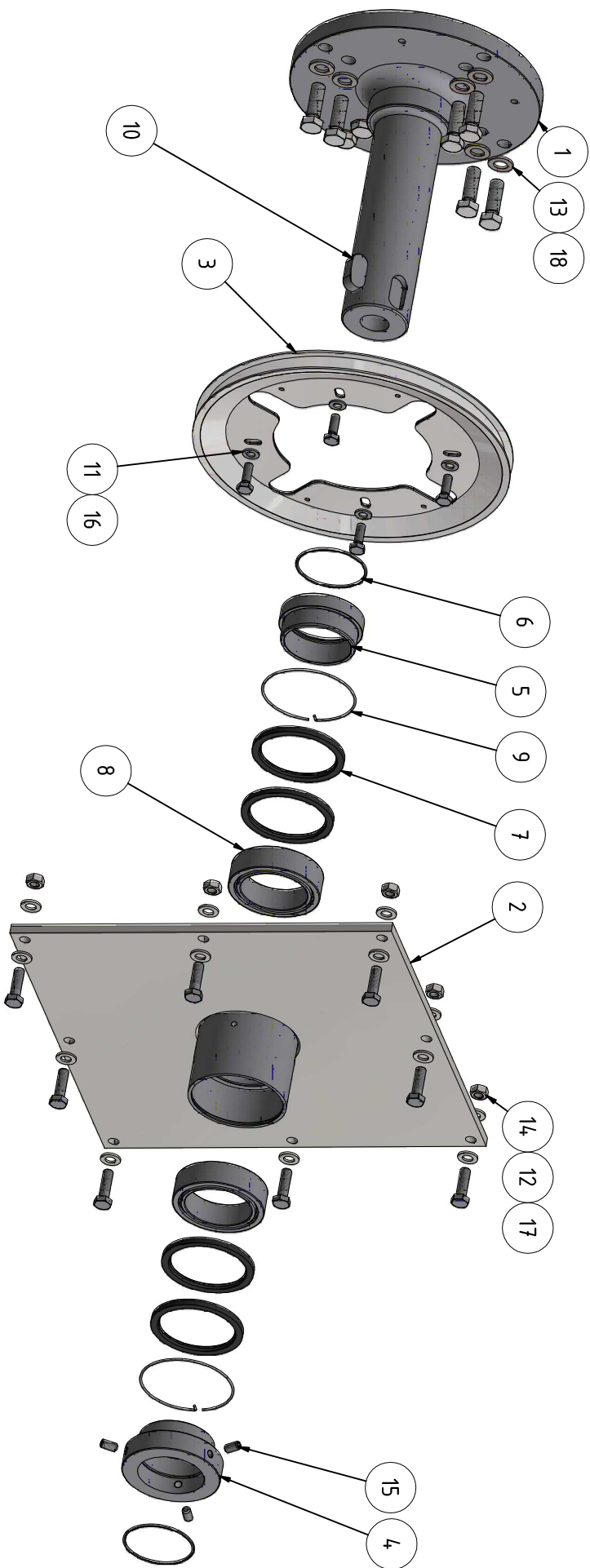
Date

Made by

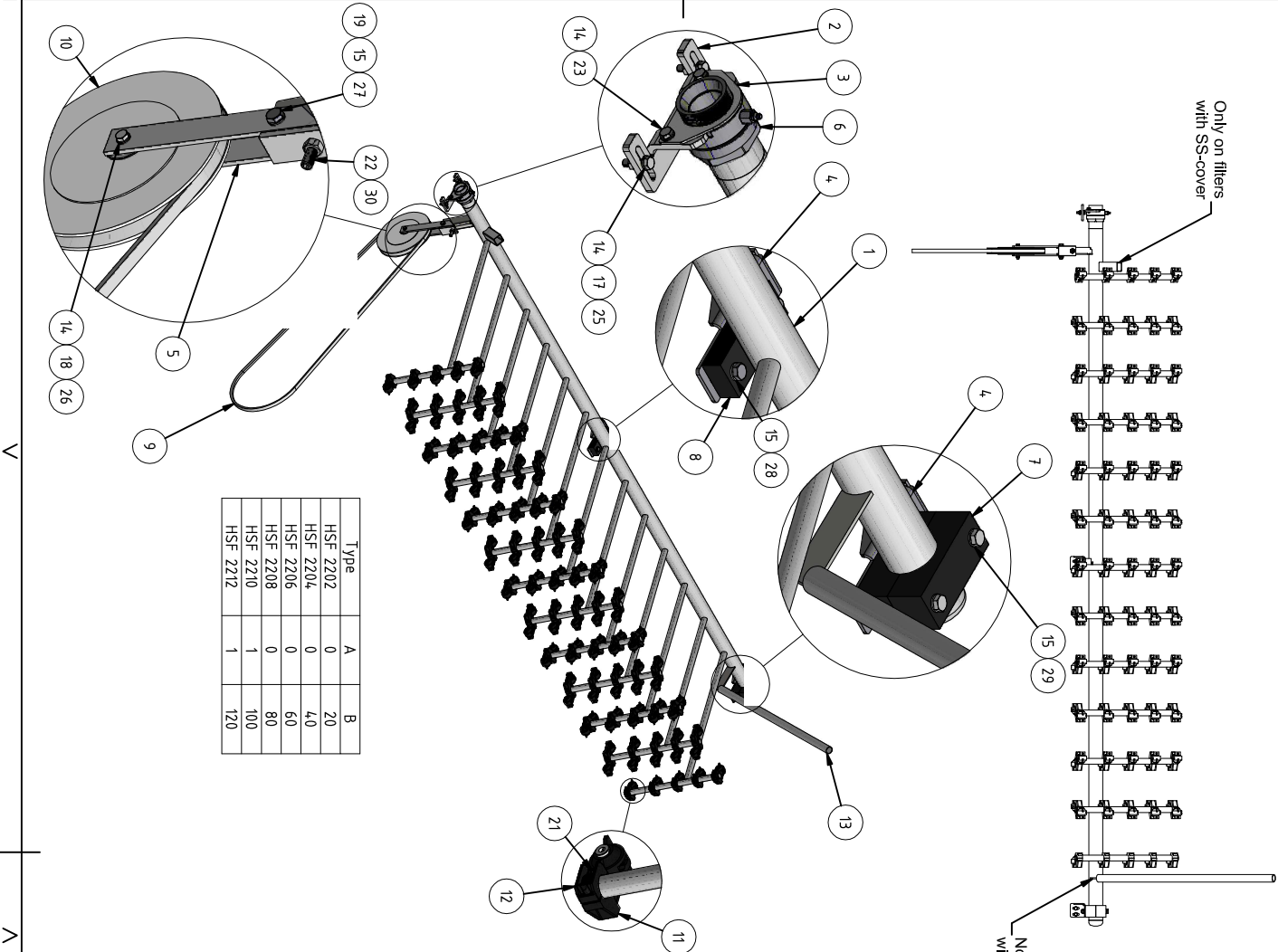
c-m no.



13	2	Screw	A4	M6S M16x30H	Art. no. 351630			
12	2	Washer	A4	17x30x3,0	Art. no. 350570			
11	6	Bolt	A4	M6S M6x30	Art. no. 350797			
10	6	Washer	A4	RB 6,4x12x1,6	Art. no. 350530			
9	1	Cap support wheel	Acetal		Drw. no. 1714			
8	1	O-ring	EPDM	99,5x3	Art. no. 425200			
7	1	Lock ring	AISI 316L	SGA50	Art. no. 423255			
6	1	Spacer	AISI 316L		Drw. no. 2123			
5	2	Ball bearing		6210	Art. no. 426530			
4	1	Shaftsealing umanchett	Rubber	50x60x7	Art. no. 425088			
3	1	Support wheel	Acetal		Drw. no. 1426			
2	1	Bearing bracket			Drw. no. 1425			
1	1	Grease Nipple	AISI 316L	M8x1	Art.no. 352310			
Part no.	Qty	Name		Material	Mod.-nr Blank Dimension Mass	Remark		
Designer EmS	Drawn by EmS	Copy	Controlled by	Stand. ISO 2768-m	Approved	Scale	Replaces	Replaced by
HYDROTECH			Support wheel assembly Exploded veiw Discfilter HSF 21					Date 20110419
							Draw. no. 4665 Edition A	



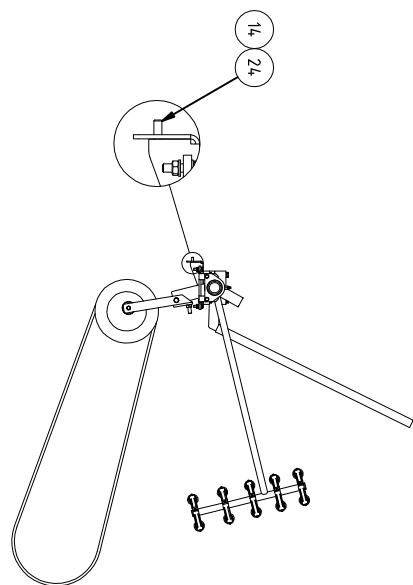
18	8	Screw	A4	M6S M16x50H	Art. no. 10104,17
17	8	Screw	A4	M6S M12x40H	Art. no. 35104,0
16	4	Screw	A4	M6S M10x30H	Art. no. 35097,0
15	3	Set screw	A4	MS6S5 M10x20	Art. no. 35216,0
14	8	Nut	A4	M6M M12	Art. no. 35014,0
13	8	Washer	A4	17x30x3,0	Art. no. 35057,0
12	16	Washer	A4	13x24x2,5	Art. no. 35056,0
11	4	Washer	A4	10,5x20x2	Art. no. 35055,0
10	1	Key steel		22x16x4,5	Art. no. 42404,0
9	2	Retaining spring		Type 80	Drw. no. 24,07
8	2	Roller bearing		4916A	Art. no. 100346,7
7	4	Shaft sealing radial		90x110x8	Art. no. 100608,3
6	2	O-sealing	EPDM	79,5x3,0	Art. no. 100413,0
5	1	Spacer			Drw. no. 4507
4	1	Retaining collar			Drw. no. 2399
3	1	Pully for spraybardrive			Drw. no. 5855
2	1	Bearing house			Drw. no. 5858
1	1	Drive Shaft HSF21			Drw. no. 4504
Pos no	Qty	Name	Material	Dimension	Remark
Designer	Drawn by	Projection method	Controlled by	Stand	Approved
Ems	Ems			ISO 2768-m	
HYDROTECH			Assy Center shaft and bearing		
Discfilter HSF2200 1C			Sheet size		
			A3		
			Sheet		
			1 / 1		
			Date		
			2015-05-11		
			Draw. no.		
			5856		
			Edition		
			B		



Type	A	B
HSF 2202	0	20
HSF 2204	0	40
HSF 2206	0	60
HSF 2208	0	80
HSF 2210	1	100
HSF 2212	1	120

Only on filters
with SS-cover

Not on filters
with SS-cover



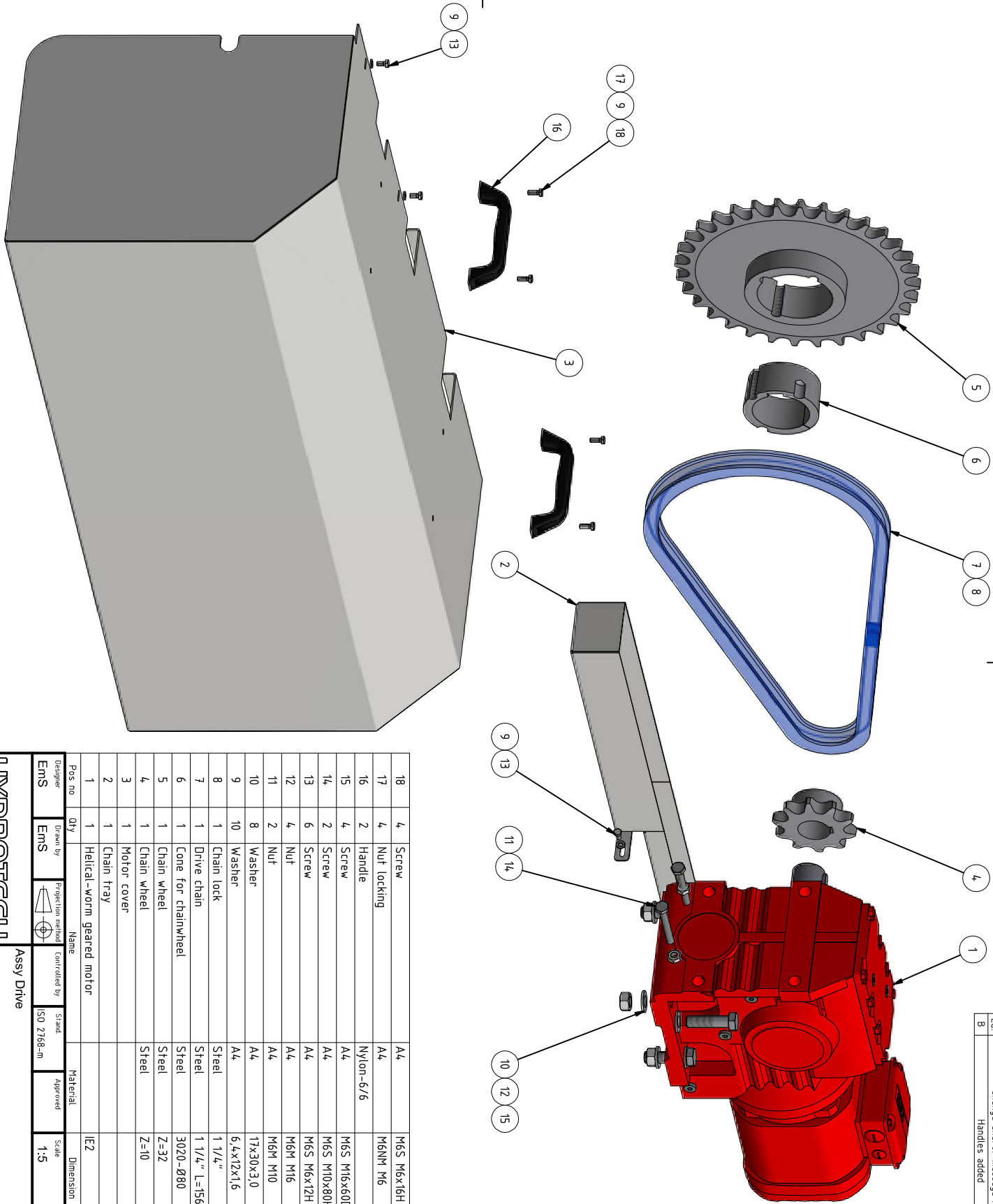
Ed.	Change and/or message no.	Rev date	Made by
B	Pos. 9,22,28 & 29 changed pos.30 added	2015-11-16	FMS
C	Option for SS-cover added	2016-07-05	JJ

30	1	Nut	A4	M6M M12	Art. no. 3501140
29	2	Screw	A4	M6S M10x100D	Art. no. 3501017
28	2xA	Screw	A4	M6S M10x40H	Art. no. 350980
27	1	Screw	A4	M6S M10x60H	Art. no. 1001821
26	1	Screw	A4	M6S M8x60H	Art. no. 350910
25	2	Screw	A4	M6S M8x30H	Art. no. 350880
24	2 + 2xA	Screw	A4	M6S M8x20H	Art. no. 350870
23	2	Screw	A4	M6S M8x16H	Art. no. 350860
22	1	Screw	A4	M6S M8x12H	Art. no. 1014405
21	B + 10	Screw	A4	HTP 4,2x30	Art. no. 1014078
19	3 + 2A	Nut locking	A4	M6NM M10	Art. no. 350330
18	1	Nut	A4	M6M M8	Art. no. 350320
17	2	Nut	A4	M6M M8	Art. no. 350120
15	6 + 4A	Washer	A4	10.5x20x2	Art. no. 350550
14	10 + 2xA	Washer	A4	8,4x16x1,6	Art. no. 350540
13	1	Pipe	AISI 316L	Ø32 x 2	L = 850
12	10	Nozzle clamp		3/4"	Art. no. 2502 Art. no. 1005304
11	B	Nozzle unit - YSN 6504			Art. no. 1015734
10	1	Pulley			Art. no. 2638
9	1	Drive belt			Art. no. 1006351
8	A	Mid support bearing f. spray bar			Art. no. 2821
7	2	Bearing for spray bar, upper part			Art. no. 1672
6	1	Swivel			Art. no. 3942
5	1	Lever			Art. no. 5849
4	A+1	Support for spray bar			Art. no. 2811
3	1	Swivel bracket	AISI316L/2205		Art. no. 1006556 / 1018685
2	1	Swivel holder			Art. no. 5947
1	1	Spray bar			Art. no. 5859

Pos. n	Qty	Name	Material	Dimension	Remark
1	1	Spray bar			
2	1	Swivel holder			
3	1	Swivel bracket	AISI316L/2205		
4	A+1	Support for spray bar			
5	1	Lever			
6	1	Swivel			
7	2	Bearing for spray bar, upper part			
8	A	Mid support bearing f. spray bar			
9	1	Drive belt			
10	1	Pulley			
11	B	Nozzle unit - YSN 6504			
12	10	Nozzle clamp			
13	1	Pipe	AISI 316L		
14	10 + 2xA	Washer			
15	6 + 4A	Washer			
17	2	Nut			
18	1	Nut locking			
19	3 + 2A	Nut locking			
21	B + 10	Screw			
22	1	Screw			
23	2	Screw			
24	2 + 2xA	Screw			
25	2	Screw			
26	1	Screw			
27	1	Screw			
28	2xA	Screw			
29	2	Screw			
30	1	Nut			

Designer	Drawn by	Projection method	Control by	Scale	Sheet size	Sheet no.	Date	Revision
Ems	Ems	ISO 2768-m	ISO 2768-m	1:20	A3	5660	1 / 1	2015-04-30

HYDROTECH	Assembly spray bar	Discfilter HSF2200 1C 2C	5660	C
-----------	--------------------	--------------------------	------	---

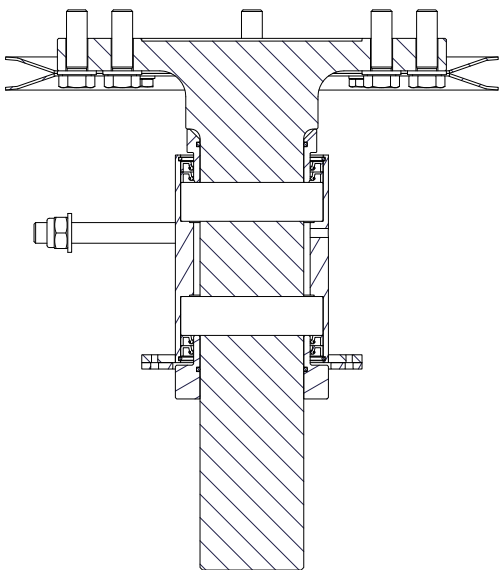
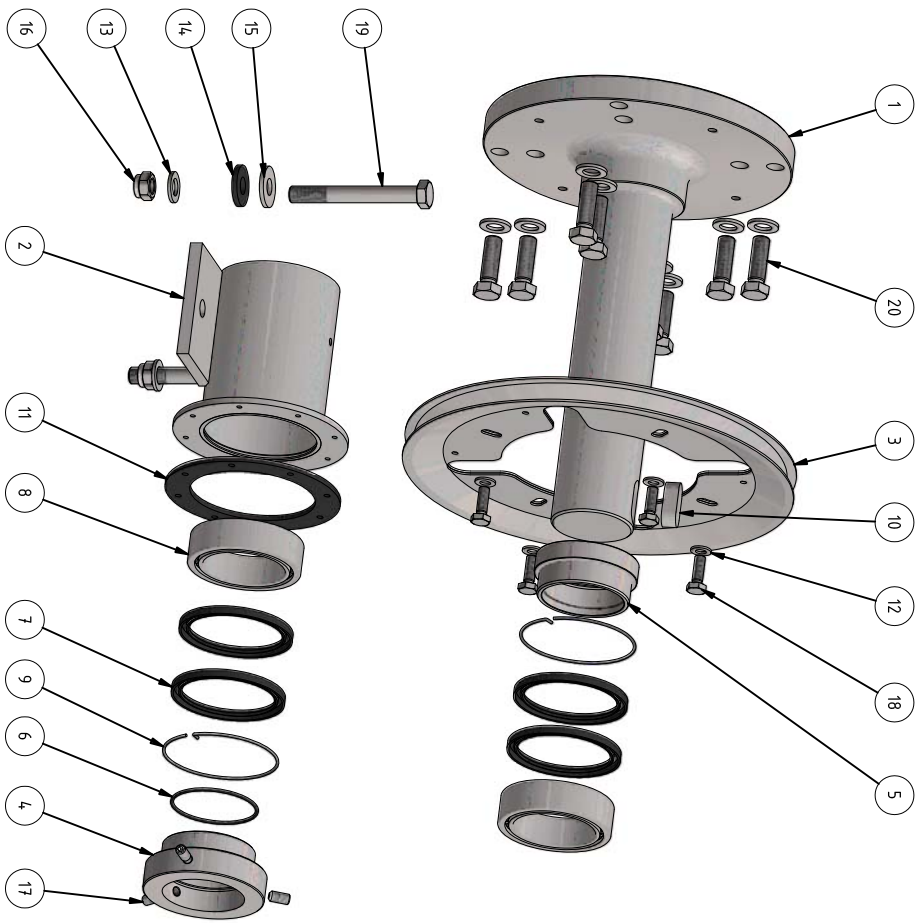


Ed	Change and/or message no.	Rev date	Made by	c-m no
B	Handles added	2015-11-03		

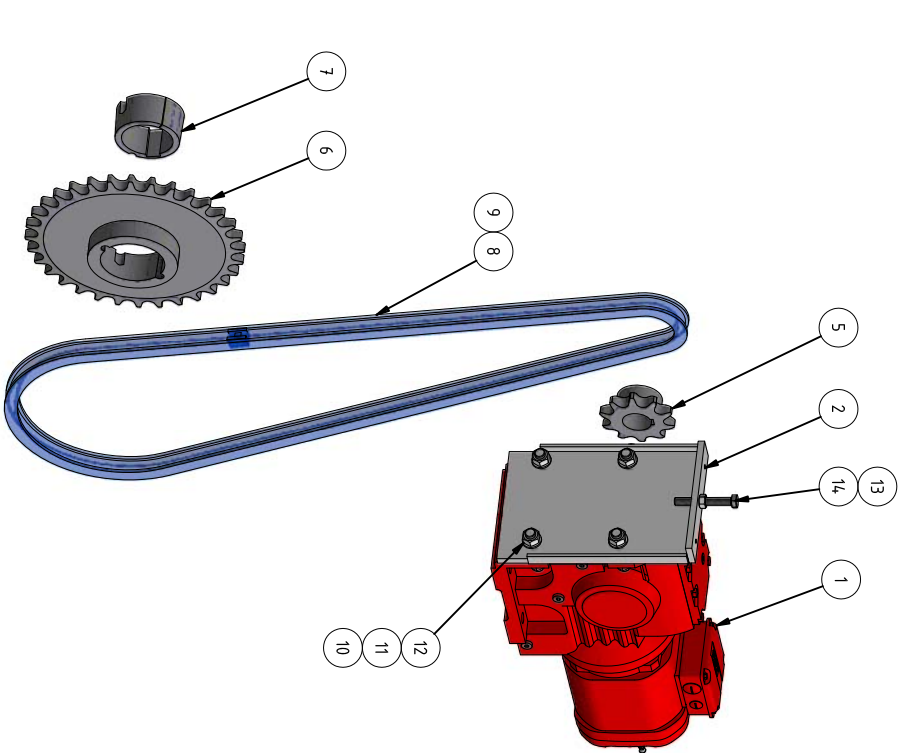
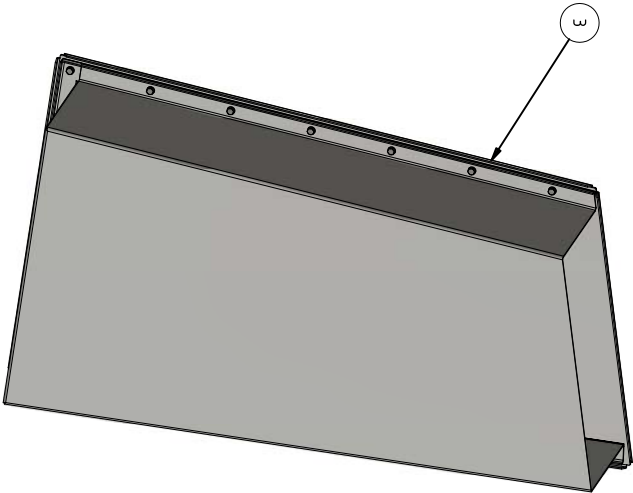
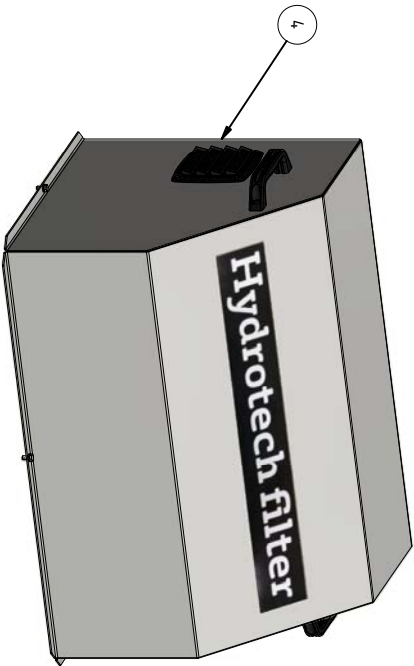
18	4	Screw	A4	M6S M6x16H	Art. no. 350780
17	4	Nut locking	A4	M6NH M6	Art. no. 350310
16	2	Handle	Nylon-6/6		Art. no. 427500
15	4	Screw	A4	M6S M16x60D	Art. no. 351660
14	2	Screw	A4	M6S M10x80H	Art. no. 351010
13	6	Screw	A4	M6S M6x12H	Art. no. 350770
12	4	Nut	A4	M6M M16	Art. no. 350150
11	2	Nut	A4	M6M M10	Art. no. 350130
10	8	Washer	A4	17x30x3,0	Art. no. 350570
9	10	Washer	A4	6,4x12x1,6	Art. no. 350530
8	1	Chain lock	Steel	1 1/4" L=1560	Art. no. 420140
7	1	Drive chain	Steel		Art. no. 1021218
6	1	Cone for chainwheel	Steel	3020-Ø80	Art. no. 1001275
5	1	Chain wheel	Steel	Z=32	Art. no. 1001271
4	1	Chain wheel	Steel	Z=10	Art. no. 420380
3	1	Motor cover			Drw. no. 5869
2	1	Chain tray			Drw. no. 5942
1	1	Helical-worm geared motor	IE2		S770RE90M4, M18
Pos no	Qty	Name	Material	Dimension	Remark
Designer	Drawn by	Projection method	Controlled by	Stand	Approved
Ems	Ems			ISO 2768-m	
				Scale	1:5
				Sheet size	A3
				Sheet	1 / 1
				Date	2015-05-13
				Draw. no.	5943
				Edition	B

HYDROTECH

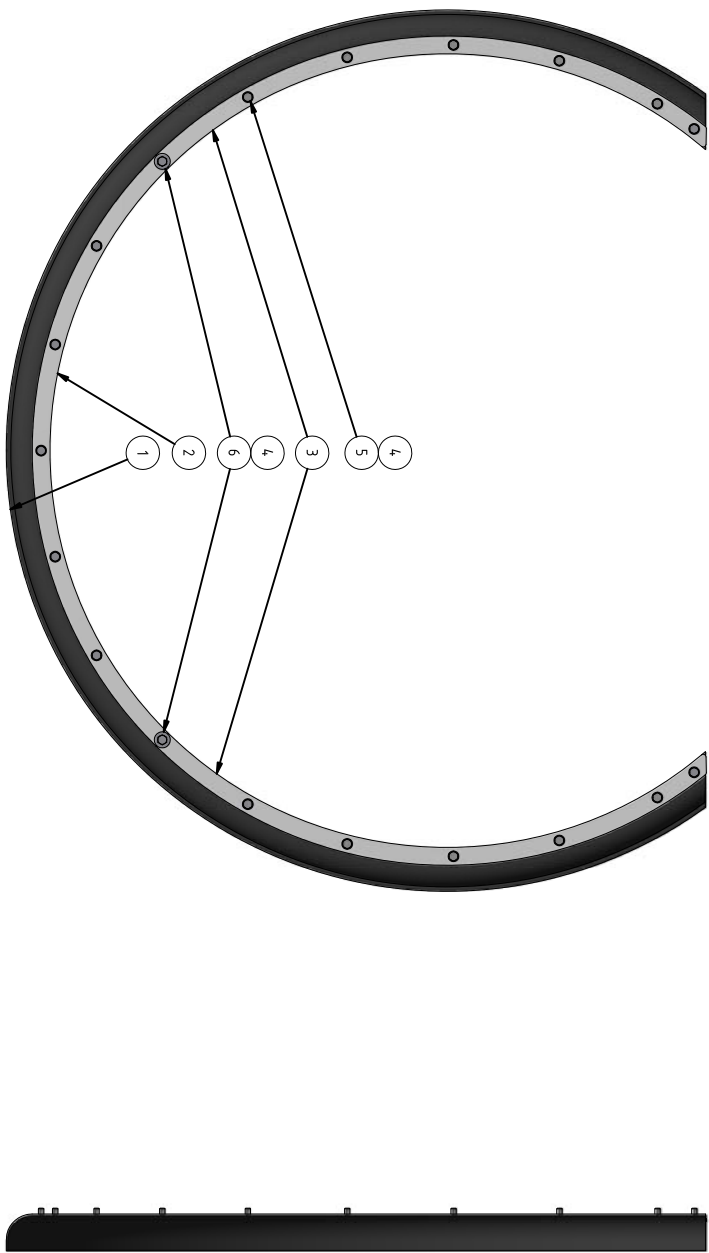
Assy Drive
Discfilter HSF2200 1C



20	8	Screw	A4	M6S M16x50H	Art. no. 1010417
19	2	Screw	Bumax 88 (A4)	M6S M16x130D	Art. no. 1014557
18	4	Screw	A4	M6S M10x30H	Art. no. 350970
17	3	Set screw	A4	MS6SS M10x20	Art. no. 352160
16	2	Nut locking	A4	M6NM M16	Art. no. 350350
15	2	Washer	S32205	Ø 16,5x40x4	Drw. no. 4675
14	2	Washer	Rubber	Ø 17x40x5	Drw. no. 4677
13	10	Washer	A4	17x30x3,0	Art. no. 350570
12	4	Washer	A4	10,5x20x2	Art. no. 350550
11	1	Seal	EPDM foam		Drw. no. 2307_p2
10	1	Key steel		22x14x45	Art. no. 424040
9	2	Retaining spring		Type 80	Drw. no. 2407
8	2	Roller bearing		4916A	Art. no. 1003467
7	4	Shaft sealing radial		90x110x8	Art. no. 1006083
6	2	O-sealing	EPDM	79,5x3,0	Art. no. 1004130
5	1	Spacer			Drw. no. 4507
4	1	Retaining collar			Drw. no. 2399
3	1	Pulley for spraybar drive			Drw. no. 5855
2	1	Bearing house			Drw. no. 2366
1	1	Drive Shaft			Drw. no. 20382
Pos no	Qty	Name	Material	Dimension	Remark



14	1	Screw	A4	M6S M12x90H	Art. no. 1015075
13	1	Nut	A4	M6M M12	Art. no. 350140
12	4	Nut	A4	M6M M16	Art. no. 350150
11	4	Nut locking	A4	M6NM M16	Art. no. 350350
10	8	Washer	A4	17x30x3.0	Art. no. 350570
9	1	Chain lock	Steel	1 1/4"	Art. no. 420140
8	1	Drive chain	Steel	1 1/4" L=24.70	Art. no. 1021722
7	1	Cone for chainwheel	Steel	3020-Ø80	Art. no. 1001275
6	1	Chain wheel	Steel	Z=32, reverse	Art. no. 1011915
5	1	Chain wheel	Steel	Z=10	Art. no. 420380
4	1	Motor cover			Drw. no. 20373
3	1	Chain trough			Drw. no. 20163
2	1	Adjustment plate for motor			Drw. no. 3714
1	1	Helical-worm geared motor			S7DRN90S4, M18
Pos no	Qty	Name	Material	Dimension	Remark
Designer	Drawn by	Projection method	Controlled by	Stand	Sheet size
Ems	KAS			ISO 2768-m	A3
HYDROTECH			Assy Drive	Scale	1:8
Discfilter HSF2200 2C			Approved	Sheet size	A3
			Draw. no.	1 / 1	Date
			20161	2016-01-21	Replaced by
					Edition
					A



6	2	Washer	A4	6,4x18x1,6	Art. no. 350532
5	17	Washer	A4	6,4x12x1,6	Art. no. 350530
4	19	Screw	A4	M6S M6x16H	Art. no. 350780
3	2	Clamp bar			Drw. no. 5863
2	1	Clamp bar			Drw. no. 4864
1	1	Rubber lip for inlet			Drw. no. 2931

Pos. no	Qty	Name	Material	Dimension	Remark
Disigner	Drawn by	Proposition method	Controlled by	Stand	Approved
Ems	JJ			ISO 2768-m	1 : 5

HYDROTECH			Inlet seal assembly		
Discfilter HSF2200 1C, 2C			Sheet size		
			A3		
			Sheet		
			1 / 1		
			Date		
			2016-12-14		
			Draw no.		
			20447		
			Edition		
			A		

SERVICE

HSF2202/12-1C-2C

Checklist / service report

To be done on every visit

☐

Check backwash pressure

Remarks:

☐

Check panels for damage

Remarks:

☐

Visually inspect the inside of the unit

Remarks:

☐

Check the nozzles for clogging

Remarks:

☐

Lubricate all grease points of the unit

Remarks:

☐

Check drive chain tension

Remarks:

☐

Visually inspect the outside of the unit, clean if needed

Remarks:

SERVICE

HSF2202/12-1C-2C

To be done on yearly visit

☐

Check oil condition in drive unit according to separate manual

Remarks:

☐

Check drum bearings for wear

Remarks:

☐

Check shaft gaskets for wear

Remarks:

☐

Check inlet gasket for wear

Remarks:

☐

Check support wheels for wear

Remarks:

SERVICE

HSF2202/12-1C-2C

To be done every five years

Replace the parts from service kit

OK

<input type="checkbox"/>	Key steel 22x14x45 mm
<input type="checkbox"/>	O-sealing 79,5x3.0 EPDM
<input type="checkbox"/>	Lock ring Ø122x2.5
<input type="checkbox"/>	Roller bearing INA SL01 4916A
<input type="checkbox"/>	Shaft sealing radial 90x110x8
<input type="checkbox"/>	Pulley for spraybar drive
<input type="checkbox"/>	Belt pulley to backwash header
<input type="checkbox"/>	Belt, moving back wash header
<input type="checkbox"/>	Bearing for spray water pipe
<input type="checkbox"/>	Swivel connection, 2"
<input type="checkbox"/>	Manometer 0-16 bar 1/4" SI
<input type="checkbox"/>	Bearing bracket spray bar
<input type="checkbox"/>	Rubber lip seal HSF1700
<input type="checkbox"/>	Support wheel type 9
<input type="checkbox"/>	Chain wheel 1 1/4" 10, Ø45H7
<input type="checkbox"/>	Chain lock 1 1/4"
<input type="checkbox"/>	Cone to chain wheel 3020-Ø80
<input type="checkbox"/>	Chain 1 1/4" Rex simplex L=2470
<input type="checkbox"/>	Chain wheel Z=32 1 1/4"

Check and if needed replace strategic and critical parts

OK

Replaced

<input type="checkbox"/>	Backwash nozzles	Qty: _____
<input type="checkbox"/>	Filter panels	Qty: _____
<input type="checkbox"/>	Driveshaft	Qty: _____
<input type="checkbox"/>	Bearing house	Qty: _____
<input type="checkbox"/>	SEW drive unit	Qty: _____
<input type="checkbox"/>	Backwash pump	Qty: _____

Remarks:
