

How to mirror location of solids tray

HDF-16 series



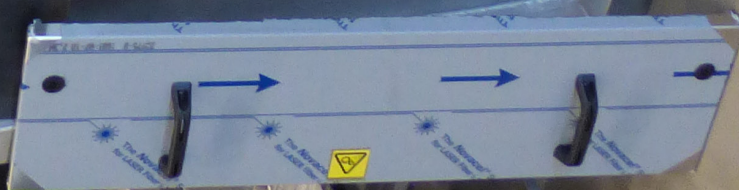
HYDROTECH
FILTERS



10265

DS

S10265 / S10260



Instructions for mirroring of sludge tray, HDF 1606 - 2H

The sludge tray is mounted and supported by the side console and the strut seen at the picture on previous page. Follow the steps below. **NOTE!** The sludge tray is weighing approximately 55 kg and we consider the dismantling and reattachment of the tray to be a two man job.

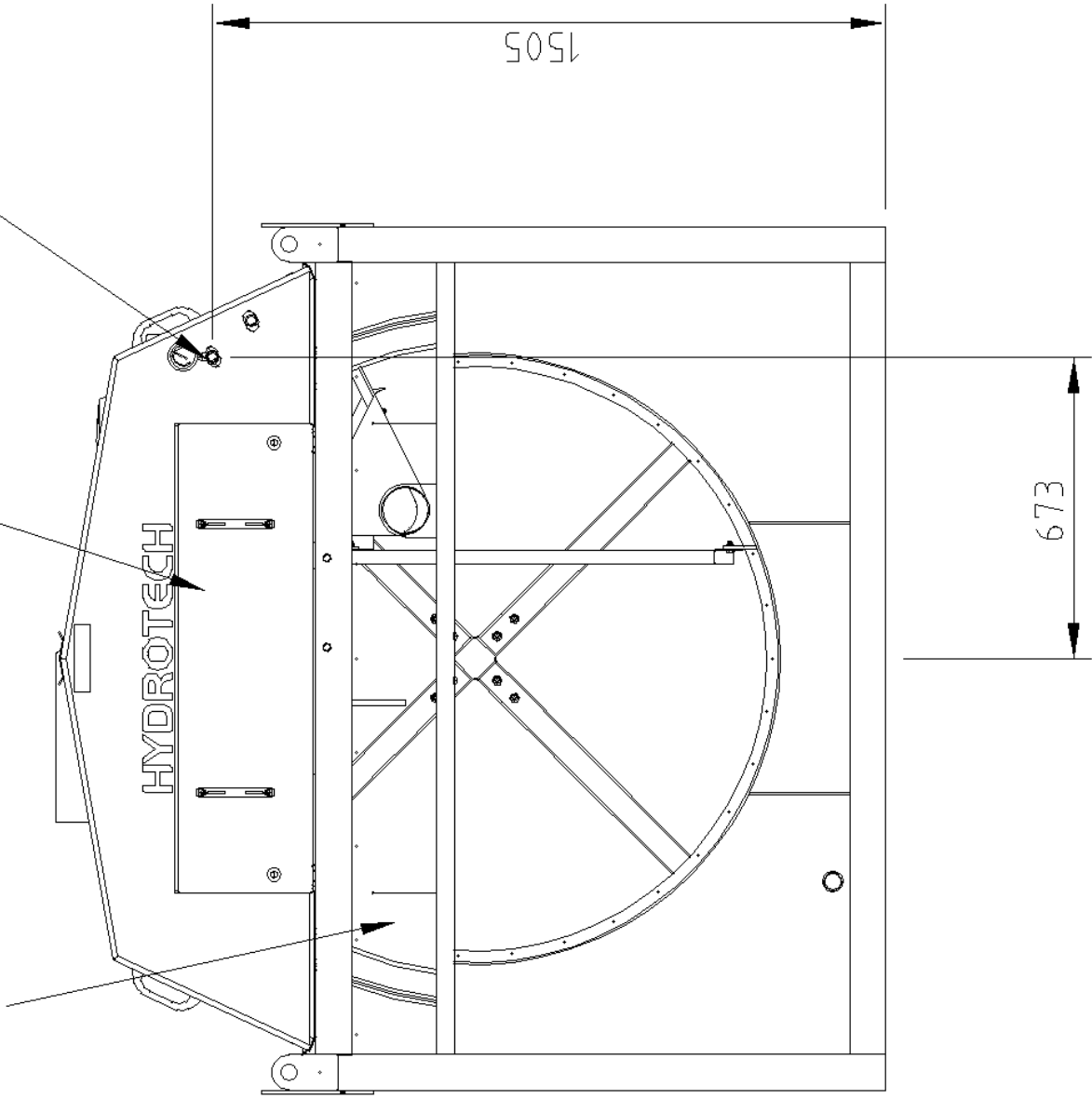
1. Remove the sludgray. This is done by removing the bolts connecting the bracket with the horizontal beam, and by removing the bolt at the bracket by the filter inlet.
2. Mirror the Ø11 mm holes for the bracket in the horizontal beam. The new holes should be located and drilled 50 and 250 mm away from the most centered of the old holes.
3. Cut the old bracket for the strut. Mirror the bracket and move it horizontally 490 mm, this will locate the bracket at the correct position at the inlet. Weld it in place.
4. Remove and mirror the front splash guard. The holes in the plastic sheet are symmetric so no new holes are needed.
5. Remove the spraybar. Mount the new brackets (the retrofitted bracket is to be bolted in place) on the other side of the filter in accordance with the attached drawing.
6. Note the location of the hole for the spraybar in the gable sheet of the lid. Transfer this hole in accordance with attached drawing to the other side of the gable sheet.
7. Attach the spraybar to the new brackets.
8. Weld the new bracket console on to the new sludge tray in accordance with attached drawing. Mount the sludge tray to the horizontal beam at the inlet. Attach the strut to the newly welded bracket. Ensure that the sludge trays weight is supported during the whole process.

NOTE! All welds made during the re-fitting of the sludge tray should be made in accordance with local regulations.

Splash protection
Front
(Optional)

Inspection hatch

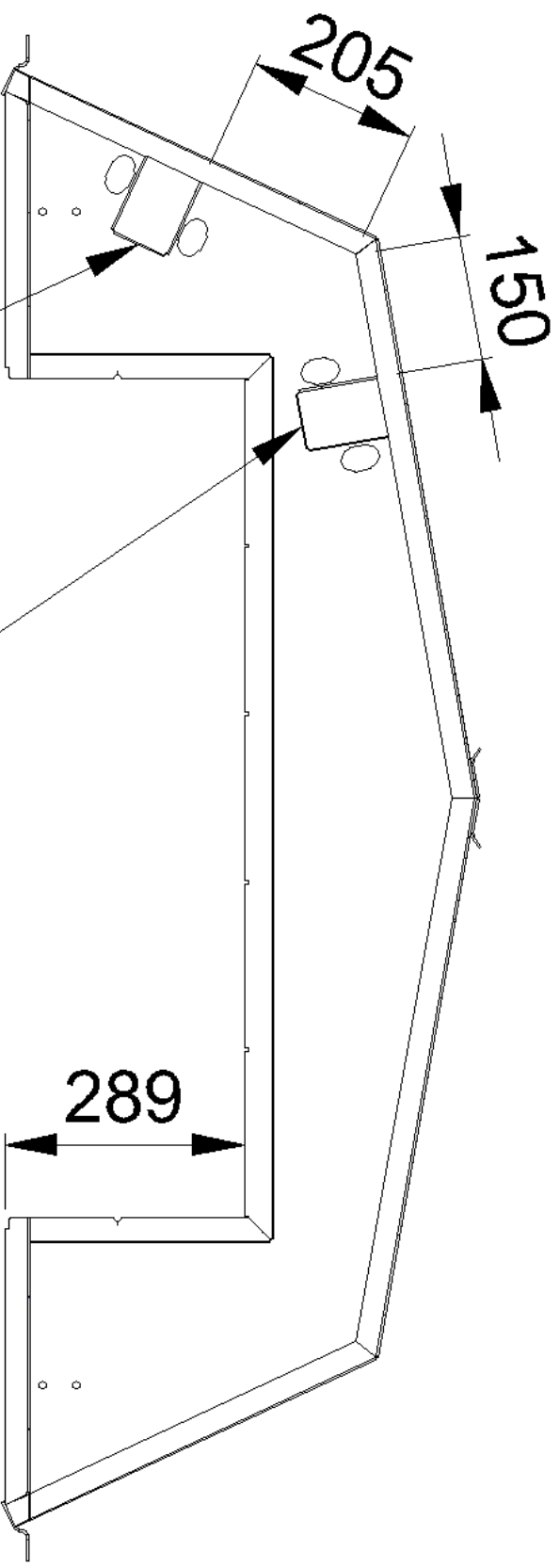
3/4" Female rinse water connection.
On filters without MTR-pump.
(Pressure gauge included)

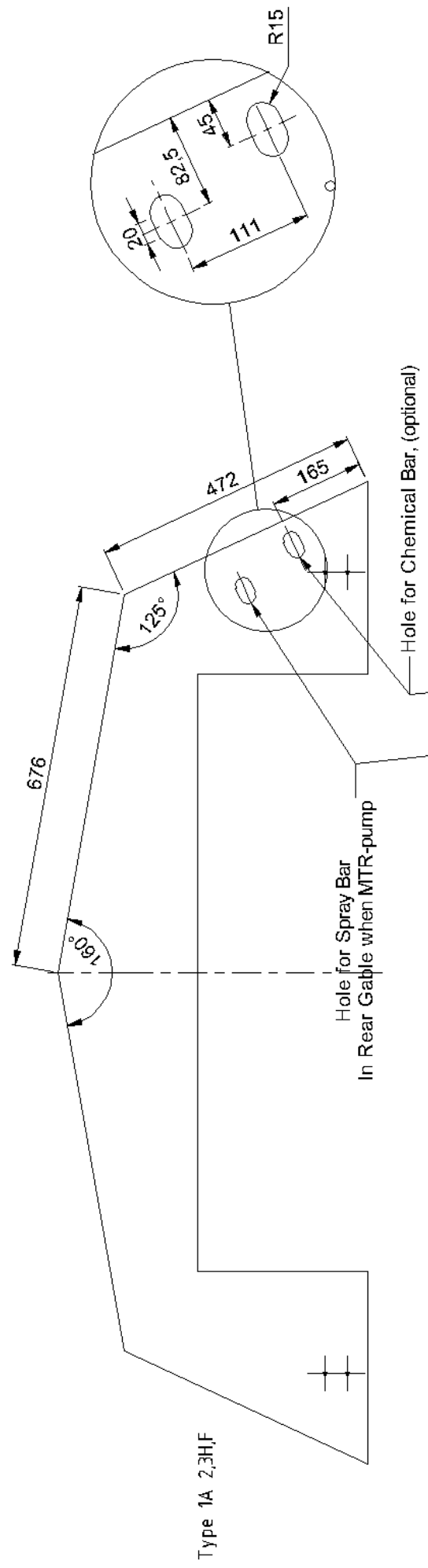


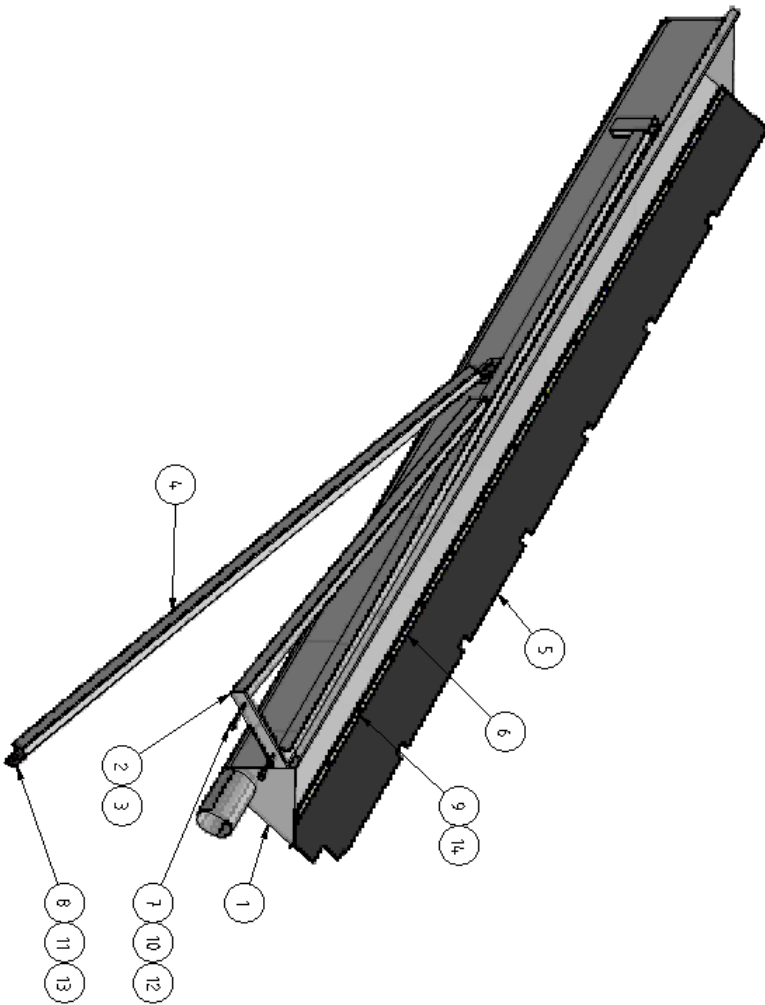
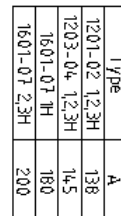
A-A

Bracket placement
for H-filter.

Bracket placement
for S-filter.







Type	B	C	D
12,1601	0	1	4
12,1602	0	1	2
12,1603	1	0	6
12,1604	1	0	8
1605	1	0	10
1606	1	0	12
1607	1	0	14

14.	D	Nut locking	A4	M6xM6 M6	Art. no. 350310
13	2	Nut locking	A4	M6xM6 M8	Art. no. 350320
12	2	Nut locking	A4	M6xM6 M10	Art. no. 350330
11	2	Washer	A4	8,4x16x1,6	Art. no. 350540
10	4	Washer	A4	10,5x20x2	Art. no. 350550
9	D	Screw	A4	M8T M6x8H	Art. no. 100P4-87
8	2	Screw	A4	M6S M8x20H	Art. no. 350870
7	2	Screw	A4	M6S M10x100D	Art. no. 351077
6	1	Bracket for Rubber Lip	A4	t = 4	Draw. no. 0670
5	1	Rubber Lip for Solids Tray	Rubber	250 x 5	Draw. no. 5672
4	1	Strut for Solids Tray			Draw. no. 0685
3	C	Console for Solids Tray			Draw. no. 0676
2	B	Console for Solids Tray			Draw. no. 0677
1	1	Solids Tray			Draw. no. 0675

P.O.S. NO.	C.V.	Name	MATERIAL	Emission	FURNACE
20-07-20	DLS	 ISO 2768-mS	1 : 15	A3	1 / 1
HYDROTECH					
Assembly Solids Tray					
Drumfilter HD/F1201-04					
Drumfilter HD/F1801-07					
0678					
C					