

SERVICE

HDF1604/7-1G

Thank you for choosing a Hydrotech filter.

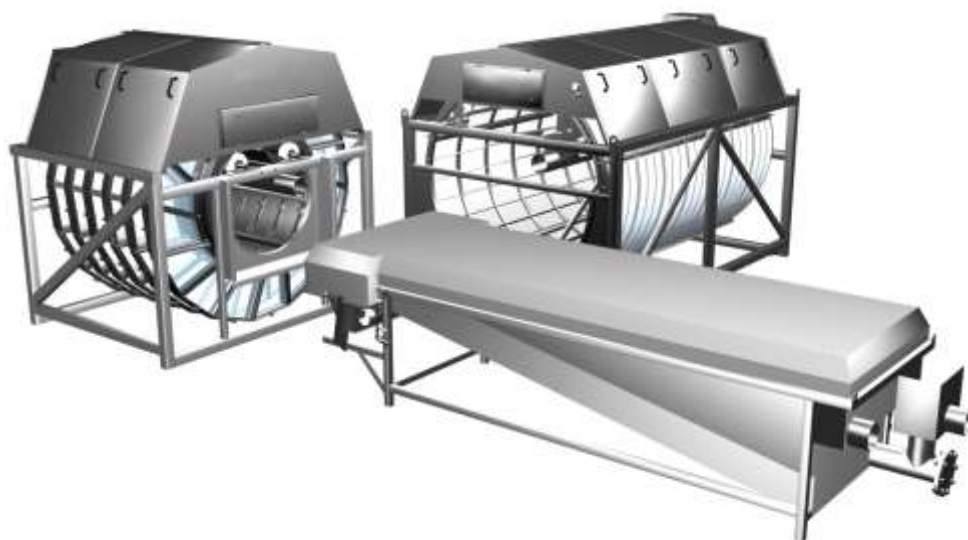
It is a trustworthy machine that will run for a long time with minimum care and service. Indeed, any mechanical equipment requires annual maintenance in order to operate efficiently and with as little down time as possible. This is also the case with your Hydrotech Drumfilter HDF1600-1G.

On the next pages, you will find recommendations for maintenance, parts to change and drawings.

If you don't have the possibility to do the maintenance yourself, Hydrotech will be pleased to send you a service offer or recommend a reliable technician that can assist you.

Apart from the periodic maintenance mentioned in the **Operation & Maintenance manual** we recommend a large service every fifth year where at least all parts in the **5 year service kit** are replaced.

To order spare parts or a service from Hydrotech and also to get the latest updated prices, please contact Hydrotech



Veolia Water Technologies AB

Hydrotech



Mejselgatan 6, 235 32 Vellinge, Sweden
Phone +46 40 42 95 30, Fax. +46 40 42 95 31
mailto:mailbox@hydrotech.se
www.hydrotech.se

SERVICE

HDF1604/7-1G

5 year service kit

Art. N°	N° on drawing	Description	Qty
1015712	4911-B pos.2	Key steel 18x11x90 mm	1
1004201	4911-B pos.4	Shaft sealing radial, V-ring	1
352310	4911-B pos.8	Grease nipple M8x1 mm	1
1010967	On spray bar	Manometer 0-16 bar ¼" SI	1
1003764	4641-C pos.12	Rubber lip seal HDF1600-L & S	1
425540	4632-C pos.4	Slide bearing Ø35	2
1001387	4632-C pos.5	Slide bearing Ø35 (L=17 mm)	2
1011615	4632-C pos.8	Spacer Ø70/13x3	2
425720	4632-C pos.9	Spacer 70x35.2x3.0 mm	4
1002089	2317-E	Support wheel type 14	4
425710	4632-C pos.18	Spacer 60/36x3 mm	2

Strategic spare parts

Art. N°	N° on drawing	Description	Qty
		Backwash nozzles	5 per segment
		Filter panels	4 per segment
278040		Cartridge for strainer	1
1015283	4911-B pos.1	Drive shaft	1

Critical spare parts

Art. N°	N° on drawing	Description	Qty
		Backwash pump	1
	4911-B pos.6	Drive gear/motor	1

Definitions:

5 year service kit:

Parts to be changed after 5 years of operation

Strategic spare parts:

Parts with short lead time (always on Hydrotech stock) which are vital for the operation of the unit.

Critical spare parts:

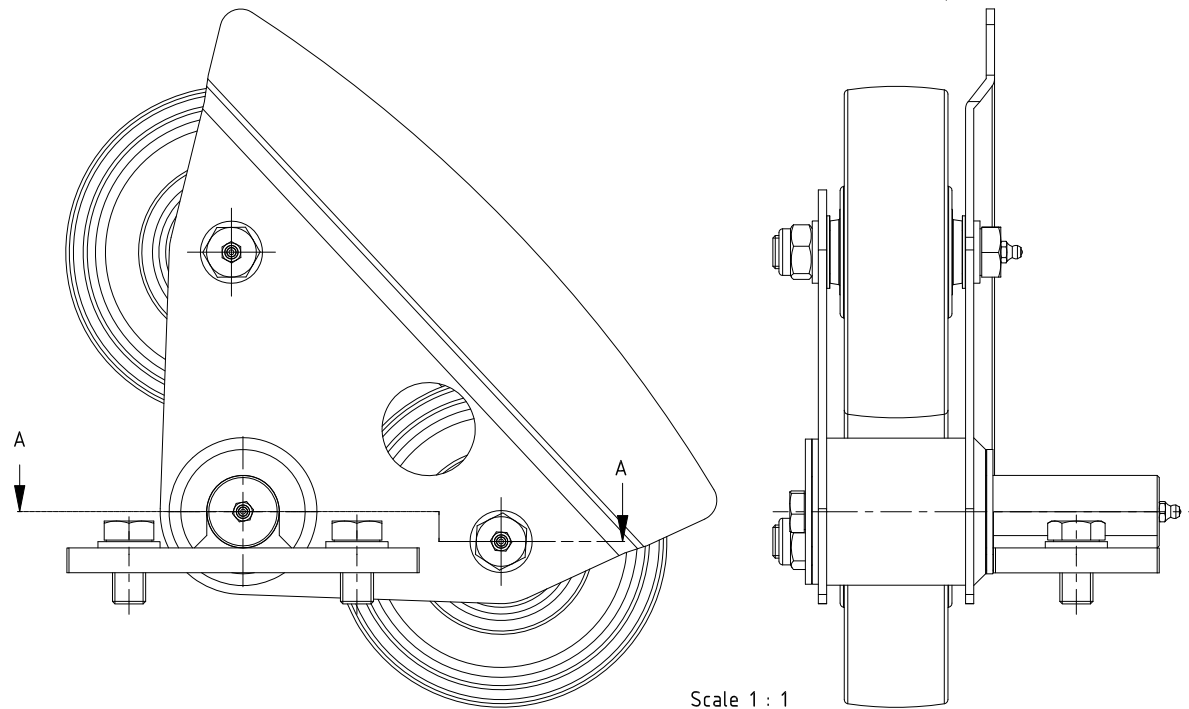
Parts with long lead time which are vital for the operation of the unit, contact Hydrotech for precise delivery time.

Veolia Water Technologies AB

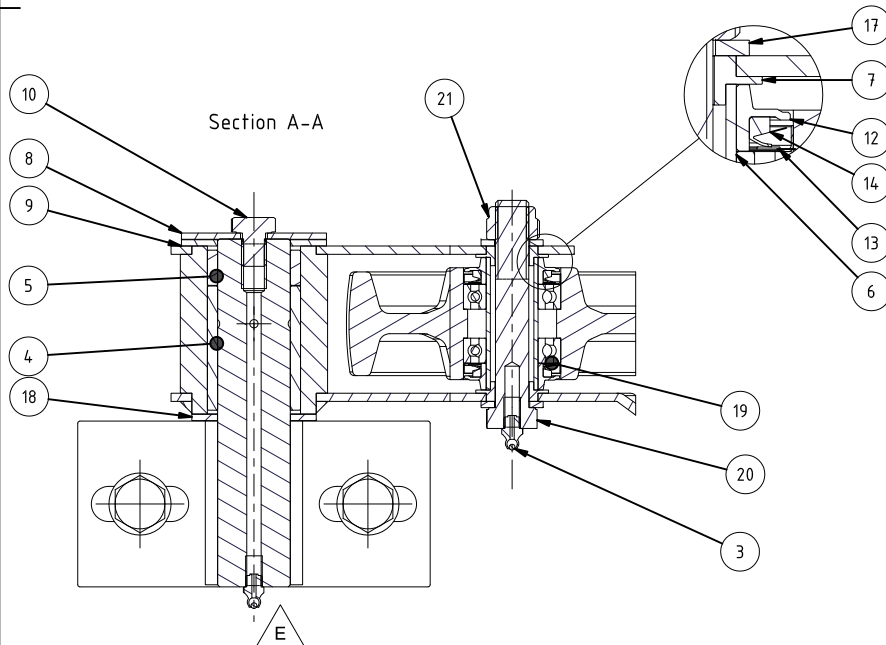
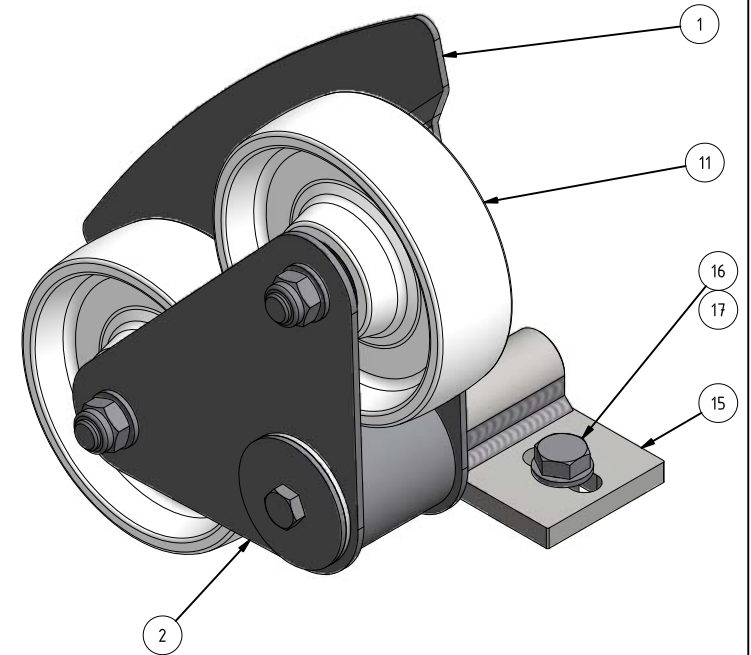
Hydrotech



Mejselgatan 6, 235 32 Vellinge, Sweden
 Phone +46 40 42 95 30, Fax. +46 40 42 95 31
mailbox@hydrotech.se
www.hydrotech.se



Scale 1 : 1

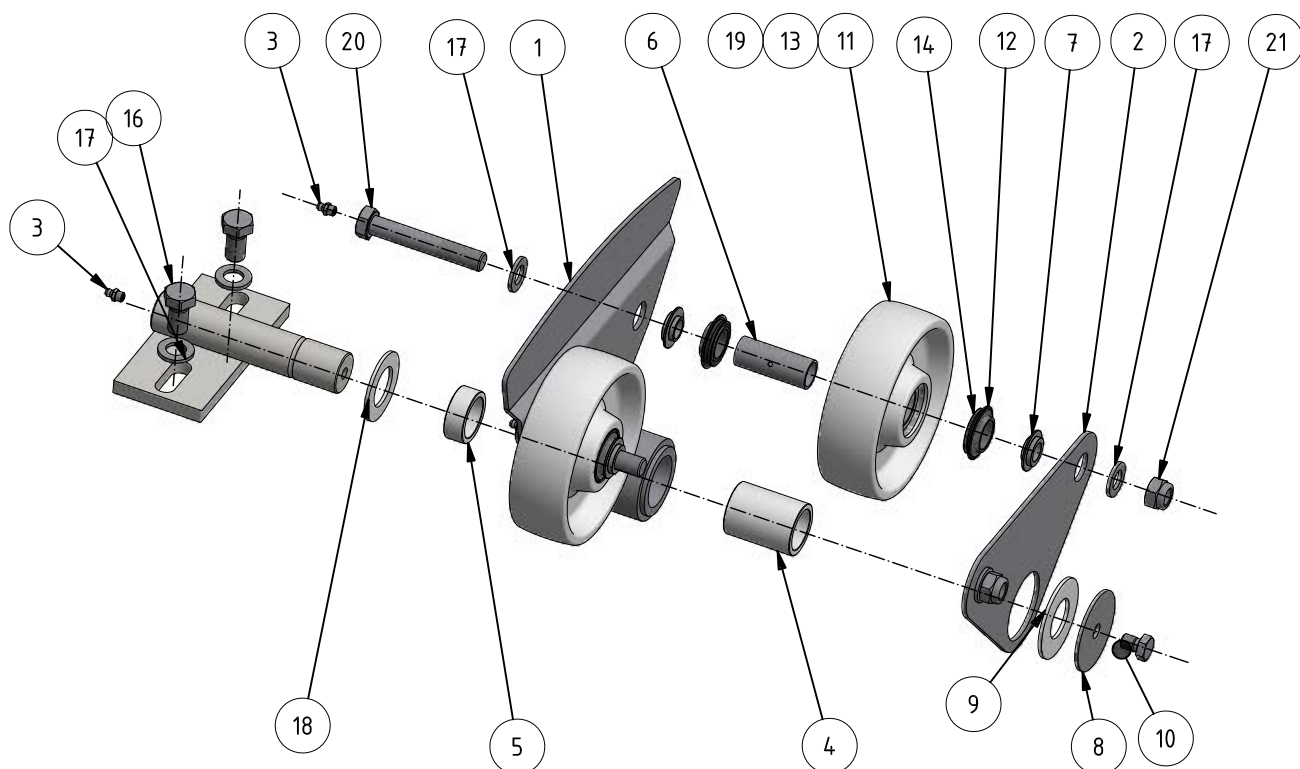


21	2	Nut locking	A4	M6NM M16	Art. no. 350350
20	2	Bolt for grease nipple	A4		Drw. no. 4571
19	4	Ball bearing	AISI 304	6005	Colson (Art.no. 1001606)
18	1	Spacer	Acetal	Ø 60x35,2x3	Drw. no. 1091
17	6	Washer	A4	RB 17x30x3	Art.no. 350570
16	2	Bolt	A4	M6S M16x30	Art.no. 351630
15	1	Bearing bracket			Drw. no. 1089 / Drw. no. 4813 (for 1600-1G)
14	4	Radial sealing			Colson (Art.no. 1001606)
13	4	Support for radial sealing	AISI 316L		Colson (Art.no. 1001606)
12	4	Support for radial sealing	Plastic, Black		Colson (Art.no. 1001606)
11	2	Support wheel	Plastic, White	160 x 50	Colson (Art.no. 1001606)
10	1	Bolt	A4	M6S M12x16	Art.no. 351023
9	1	Spacer	Acetal	Ø 70x35,2x3	Drw. no. 1091
8	1	Washer		Ø 70x13x3	Drw. no. 1091
7	4	Shaft end			Drw. no. 2282
6	2	Shaft tube			Drw. no. 2282
5	1	Slide bearing Wolf	ZX100	Ø 45/35 L=17	Art.no. 1001387
4	1	Slide bearing Wolf	ZX100	Ø 45/35 L=60	Art.no. 425540
3	3	Grease Nipple	AISI 316L	M8x1	Art.no. 352310
2	1	Boogie support gable			Drw. no. 1092
1	1	Boogie gable with bearing house		Left + Right	Drw. no. 4583

Part no.	Qty	Name	Material	Mod.-nr Blank Dimension Mass	Remark
Designer	Drawn by	Copy	Controlled by	Stand.	Approved
	EmS			ISO 2768-m	
Scale 1:2,5					Replaces
Boogie assembly (type 14) (Right shown) Drumfilter HDF 1600-1G 1605-07, 2005-07					Replaced by
HYDROTECH					Date 110201
Draw. no. 2317 Edition E					

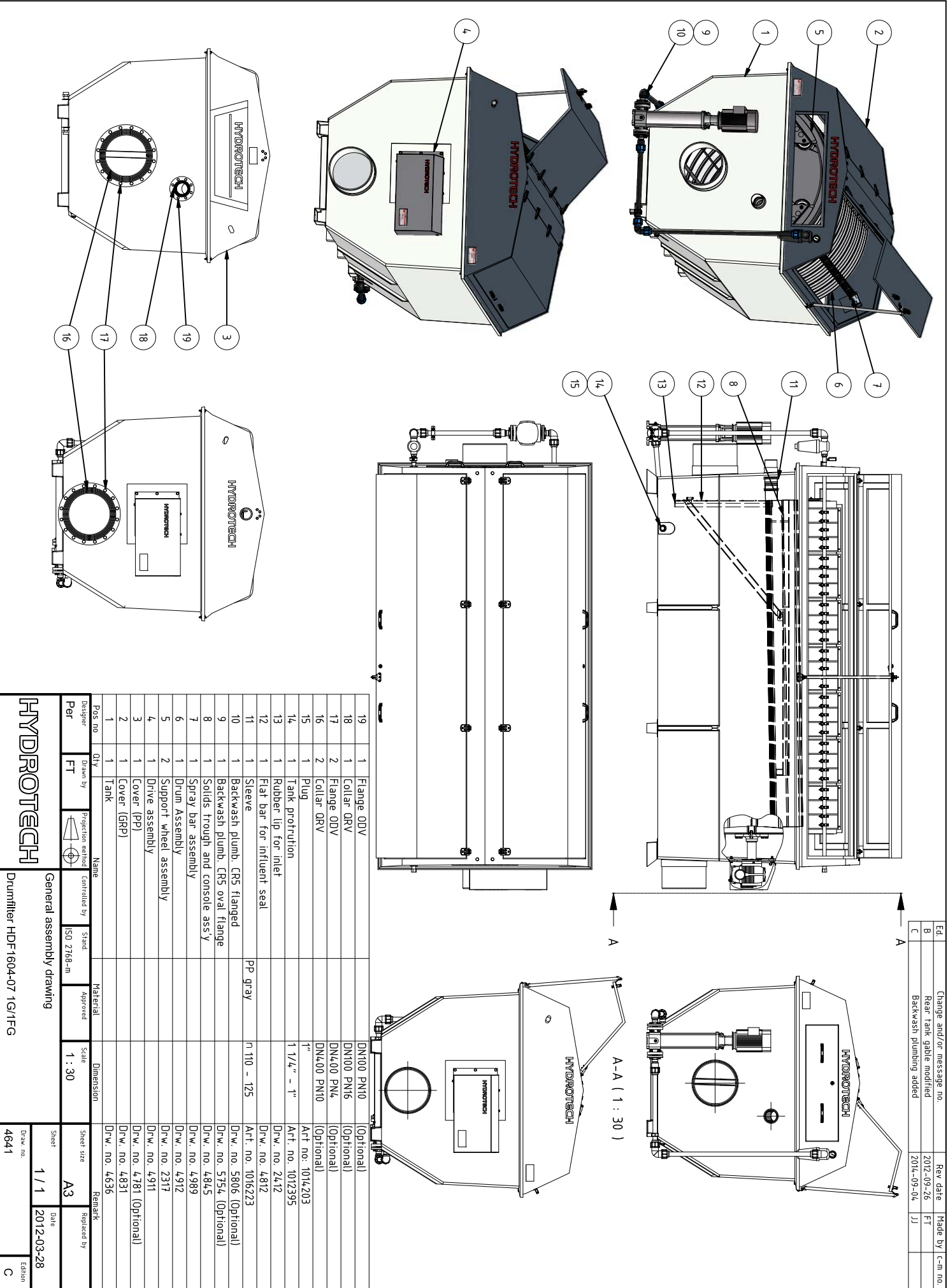
E	Central greasing for bearing br.	160120	FT	
Ed.	Change and/or message no.	Date	Made by	c-m no.

Ed.	Change and/or message no.	Date	Made by	c-m no.
B	Type 1600-1G added	20120329	FT	
C	Central greasing added	20160121	FT	

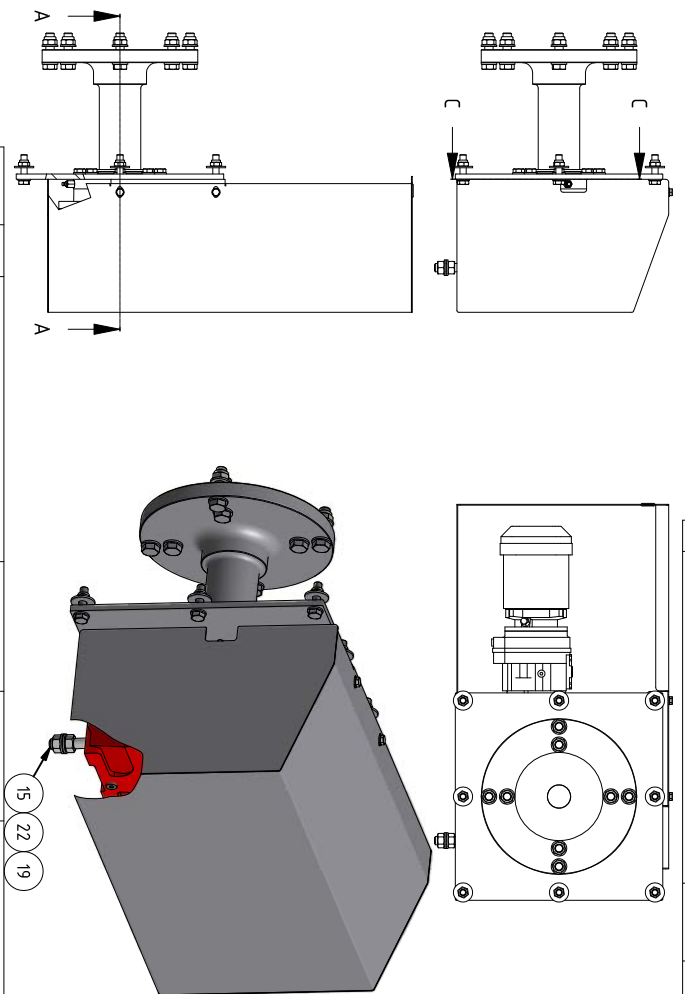


21	2	Nut locking	A4	M6NM M16	Art. no. 350350
20	2	Bolt for grease nipple	A4		Drw. no. 4571
19	4	Ball bearing	AISI 304	6005	Colson (Art.no. 1001606)
18	1	Spacer	Acetal	Ø 60x35,2x3	Drw. no. 1091
17	6	Washer	A4	RB 17x30x3	Art.no. 350570
16	2	Bolt	A4	M6S M16x30	Art.no. 351630
15	1	Bearing bracket			Drw. no. 1089 / Drw. no. 4813 (for 1600-1G)
14	4	Radial sealing			Colson (Art.no. 1001606)
13	4	Support for radial sealing	AISI 316L		Colson (Art.no. 1001606)
12	4	Support for radial sealing	Plastic, Black		Colson (Art.no. 1001606)
11	2	Support wheel	Plastic, White	160 x 50	Colson (Art.no. 1001606)
10	1	Bolt	A4	M6S M12x16	Art.no. 351023
9	1	Spacer	Acetal	Ø 70x35,2x3	Drw. no. 1091
8	1	Washer		Ø 70x13x3	Drw. no. 1091
7	4	Shaft end			Drw. no. 2282
6	2	Shaft tube			Drw. no. 2282
5	1	Slide bearing Wolf	ZX100	Ø 45/35 L=17	Art.no. 1001387
4	1	Slide bearing Wolf	ZX100	Ø 45/35 L=60	Art.no. 425540
3	3	Grease Nipple	AISI 316L	M8x1	Art.no. 352310
2	1	Boogie support gable			Drw. no. 1092
1	1	Boogie gable with bearing house		Left + Right	Drw. no. 4583

Part no.	Qty	Name	Material	Mod.-nr Blank Dimension Mass	Remark
Designer EmS	Drawn by EmS	Copy	Controlled by	Stand. ISO 2768-m	Approved
HYDROTECH			Boogie assembly (type 14) Exploded view Drumfilter HDF1600-1G, 1605-07, 2005-07		
4632 Edition C					Date 110314



General conditions and use for this drawing is in accordance to ORGALIME S2000



Ed.	Change and/or message no.	Rev date	Made by	c-m no
B	Updated with washers, nvloc, earth bolt etc	2012-10-11	FT	-

Pos no	Qty	Name	Material	Dimension	Remark
23	1	Cable protection	Rubber	Hole Ø20	Art. no. 1014223
22	2	Nut	A4	M6x M6	Art. no. 350150
21	8	Nut locking	A4	M6xN M16	Art. no. 350350
20	8	Nut locking	A4	M6xN M12	Art. no. 350340
19	18	Washer	A4	17x30x3,0	Art. no. 350570
18	8	Washer	A4	13x37x3	Art. no. 350565
17	16	Washer	A4	13x24x2,5	Art. no. 350560
16	2	Washer	A4	8,4x16x1,6	Art. no. 350540
15	1	Pin bolt	A4	PS M16x80	Art. no. 100884,9
14	8	Screw	A4	M6S M16x60D	Art. no. 351660
13	8	Screw	A4	M6S M12x50H	Art. no. 351050
12	8	Screw	Bumax 88 (A4)	M6S M12x25H	Art. no. 101514,6
11	2	Screw	A4	M6S M6x12H	Art. no. 350850
10	1	Bracket for motor cover			Drw. no. 4810
9	1	Motor cover			Drw. no. 4809
8	1	Grease fitting M8x1	Stainless		Art. no. 352310
7	1	Adapter			Drw. no. 4724
6	1	Drive Unit SAZ7TR3TDS71M4 M1B			Art. 1015129 w lubr hole M10x1
5	1	Mount plate for gearbox			Drw. no. 4854
4	1	V-Ring		V-80A	Art. no. 1004201
3	3	Spacer for Drive Shaft			Drw. no. 4642
2	1	Flat Key SMS2306		18x11x90	Art. no. 1015712
1	1	Drum shaft			Drw. no. 4806

HYDROTECH

Drive Assembly
HDF1600 1G

Draw. no.	1 / 1	2012-02-24
-----------	-------	------------

SERVICE

HDF1604/7-1G

Checklist / service report

To be done on every visit

☐

Check backwash pressure

Remarks:

☐

Check panels for damage

Remarks:

☐

Visually inspect the inside of the unit

Remarks:

☐

Check the nozzles for clogging

Remarks:

☐

Lubricate all grease points of the unit

Remarks:

☐

Visually inspect the outside of the unit, clean if needed

Remarks:

Veolia Water Technologies AB

Hydrotech



Mejselgatan 6, 235 32 Vellinge, Sweden
Phone +46 40 42 95 30, Fax. +46 40 42 95 31
mailbox@hydrotech.se
www.hydrotech.se

SERVICE

HDF1604/7-1G

To be done on yearly visit

☐

Check oil condition in drive unit according to separate manual

Remarks:

☐

Check drum bearings for ware

Remarks:

☐

Check shaft gaskets for ware

Remarks:

☐

Check inlet gasket for ware

Remarks:

☐

Check support wheels for ware

Remarks:

Veolia Water Technologies AB

Hydrotech



Mejselgatan 6, 235 32 Vellinge, Sweden
Phone +46 40 42 95 30, Fax. +46 40 42 95 31
mailbox@hydrotech.se
www.hydrotech.se

SERVICE

HDF1604/7-1G

To be done every five years

Replace the parts from service kit

Ok

<input type="checkbox"/>	Key steel 18x11x90 mm
<input type="checkbox"/>	Shaft sealing radial, V-ring
<input type="checkbox"/>	Grease nipple M8x1 mm
<input type="checkbox"/>	Manometer 0-16 bar ¼" SI
<input type="checkbox"/>	Rubber lip seal HDF1600-L & S
<input type="checkbox"/>	Slide bearing Ø35
<input type="checkbox"/>	Slide bearing Ø35 (L=17 mm)
<input type="checkbox"/>	Spacer Ø70/13x3
<input type="checkbox"/>	Spacer 70x35.2x3.0 mm
<input type="checkbox"/>	Support wheel type 14
<input type="checkbox"/>	Spacer 60/36x3 mm

Check and if needed replace strategic and critical parts:

OK

<input type="checkbox"/>	Nozzles	Qty: _____
<input type="checkbox"/>	Panels	Qty: _____
<input type="checkbox"/>	Drive shaft	Qty: _____
<input type="checkbox"/>	Drive unit	Qty: _____
<input type="checkbox"/>	Backwash pump	Qty: _____

Remarks:

Veolia Water Technologies AB

Hydrotech



Mejselgatan 6, 235 32 Vellinge, Sweden
Phone +46 40 42 95 30, Fax. +46 40 42 95 31
mailto:mailbox@hydrotech.se
www.hydrotech.se