

SERVICE

HSF2204/24-1F-2F

Thank you for choosing a Hydrotech filter.

It is a reliable machine that will run for a long time with minimum care and service. Indeed, any mechanical equipment requires annual maintenance in order to operate efficiently and with as little down time as possible. This is also the case with your Hydrotech Discfilter HSF2204/24, 1F or 2F.

On the next pages, you will find recommendations for maintenance, parts to change and drawings.

If you don't have the possibility to do the maintenance yourself, Hydrotech will be pleased to send you a service offer or recommend a reliable technician that can assist you.

Apart from the periodic maintenance mentioned in the **Operation & Maintenance manual** we recommend a large service every fifth year where at least all parts in the **5 year service kit** are replaced.

To order spare parts or a service from Hydrotech and also to get the latest updated prices, contact Hydrotech.

SERVICE

HSF2204/24-1F-2F

5 year service kit

Art. N°	N° on drawing	Description	Qty
1008030	2976-J pos.3 & 4295-D pos.5	Slide bearing for drum	2
1012535	2976-J pos.5	Rubber lip inlet seal	1
1010585	2976-J pos.8	V-sealing, V-180A	1
1008139	4295-D pos.3	Axial bearing	1
1008493	4295-D pos.6	Rubber sealing shaft	1
1012043	4259-G pos.6	Sprocket wheel motor 2200 Z=12	1
1008586	4259-G pos.10	Wheel to backwash unit 2200-N	1
1008736	4978-A pos.2	Bearing bracket 2200	1
1000808	4978-A pos.3	Bearing for spray water pipe	1
1012730	4978-A pos.6	Swivel connection, 2"	1
1006903	3826-B pos.4	Cartridge, 200	1
1007999	5151-A pos.1	Rubber lip seal	1
1008141	5151-A pos.5	Guidingblocks Drum 2200M T=8	2

Strategic spare parts

Art. N°	N° on drawing	Description	Qty
	4978-A pos.9	Backwash nozzles	10/disc
	3460-B pos.5	Filter panels	28/disc
1016604	4259-G pos.11	Drive chain	1
1012044	4259-G pos.7	Sprocket wheel drum	1

Critical spare parts

Art. N°	N° on drawing	Description	Qty
		Backwash pump	1
	4259-G pos.2	Drive unit	1

Definitions:

5 year service kit:

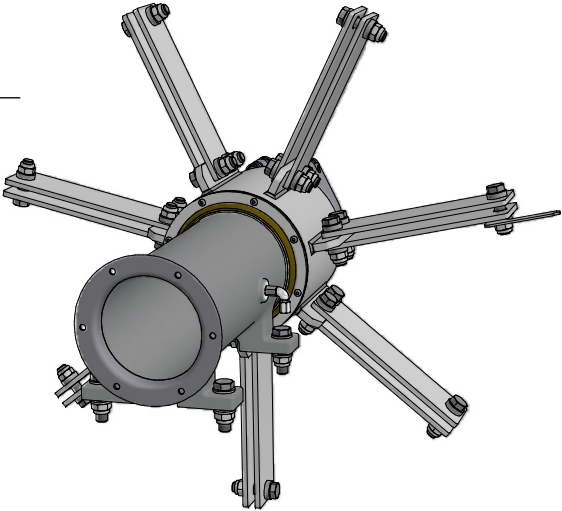
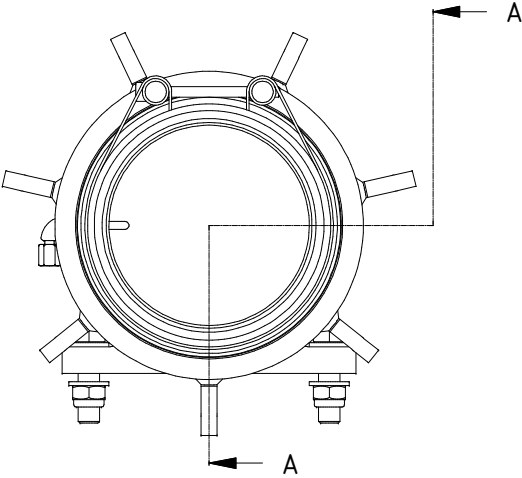
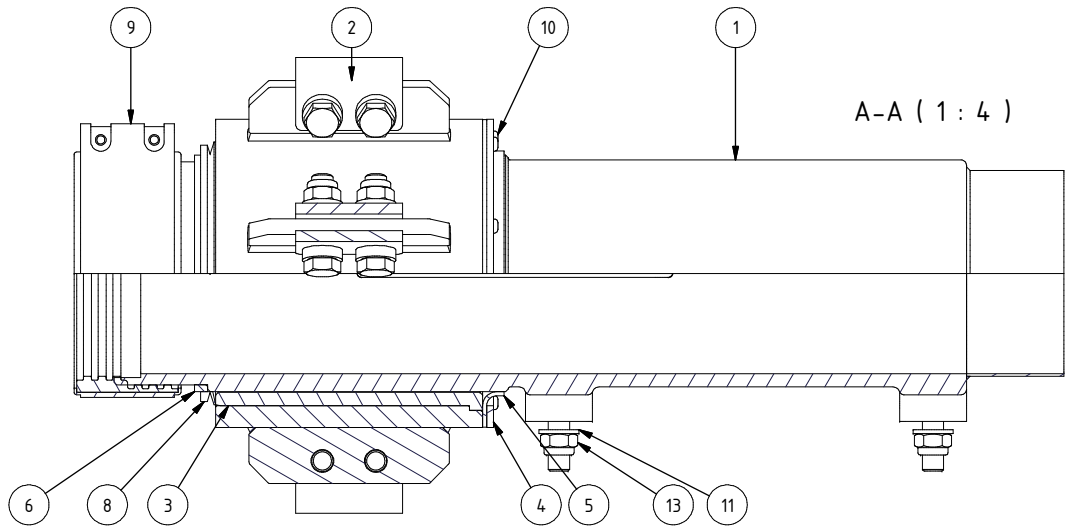
Parts to be changed after 5 years of operation

Strategic spare parts:

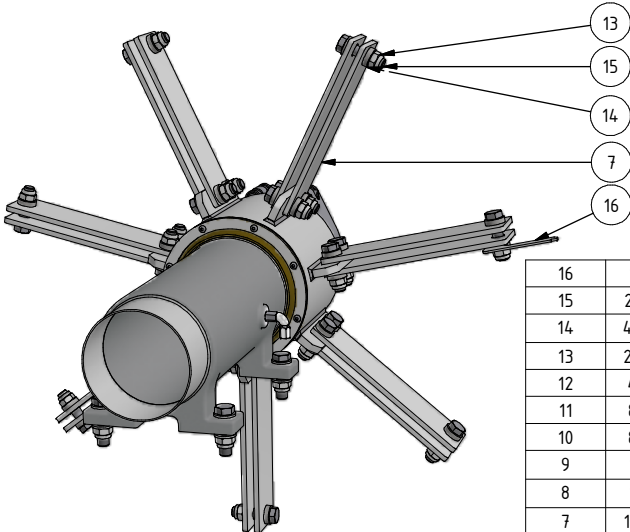
Parts with short lead time (always on Hydrotech stock) which are vital for the operation of the unit.

Critical spare parts:

Parts with long lead time which are vital for the operation of the unit, contact Hydrotech for precise delivery time.



For flush valve



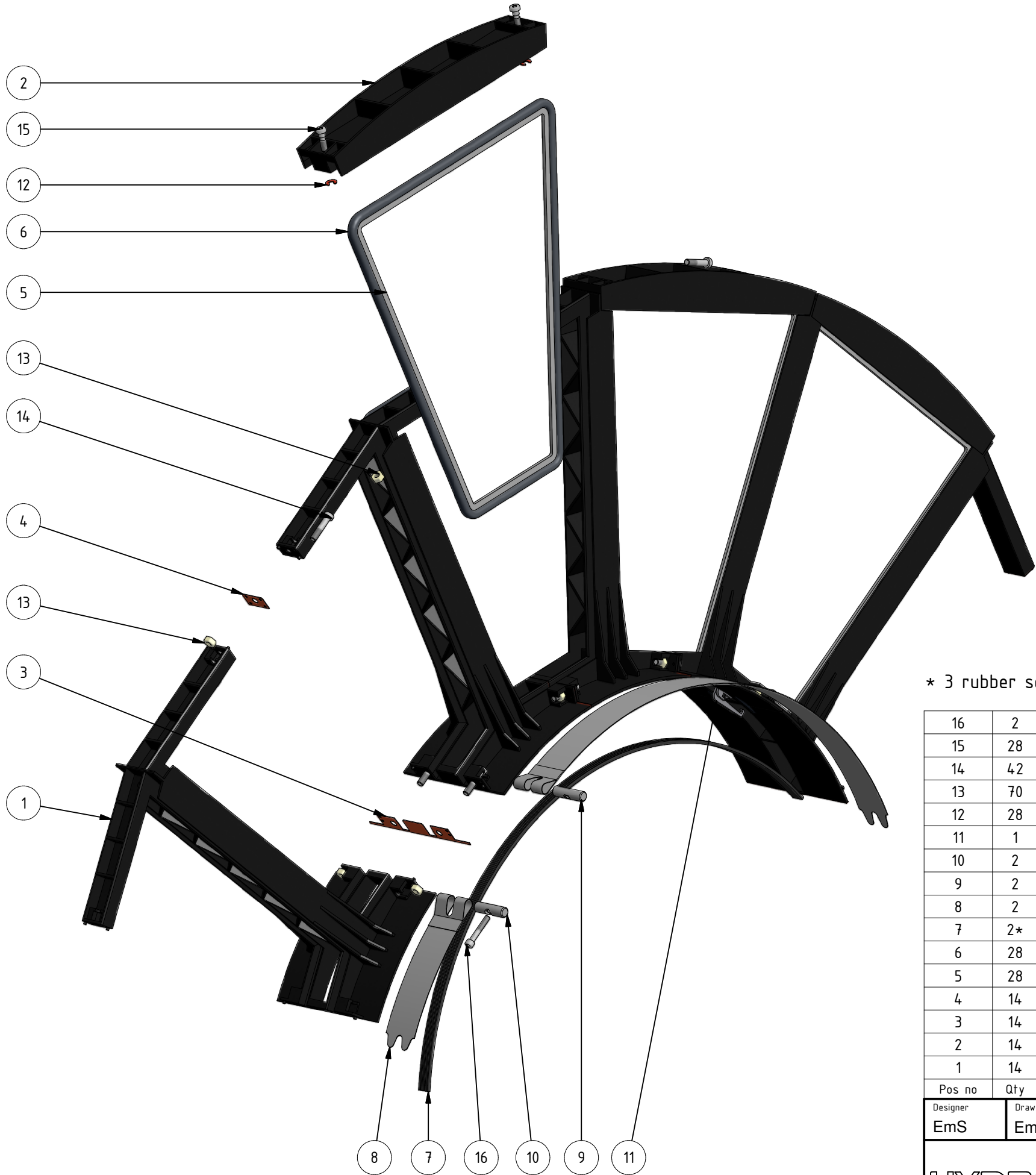
Pipe connection

K	M16x60D was M16x50H	2016-02-24	JJ	
J	Scraper added	2015-02-05	JJ	
I	New bolt joints on drum spokes	2014-05-30	JJ	190
H	Pos 4 new drw. no. 5138	2012-10-12	JJ	
G	Pos 1 new drw. no. 4894	2012-05-28	JJ	
F	Effluent -> 4295, new material	2010-05-03	JJ	
Ed.	Change and/or message no.	Date	Made by	c-m no.

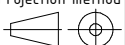

16	1	Scraper	AISI 316L		Drw. no. 3699
15	21	Screw	A4	M6S M16x65D	Art. no. 1017683
14	42	Washer	A4	18x30x8	Art. no. 1017685
13	25	Nut locking	A4	M6NM M16	Art. no. 350350
12	4	Screw	A4	M6S M16x60D	Art. no. 351660
11	8	Washer	A4	17x30x3,0	Art. no. 350570
10	8	Screw	A4	MK6S M6x16H	Art. no. 1005612
9	1	Teekay Connection		150/168,3	Art. no. 1008596
8	1	Forsheda V-ring V-180A	Nitrill		Art. no. 1010585
7	14	Spoke			Drw. no. 5145
6	1	Sleeve			Drw. no. 3351
5	1	Seal for influent bearing			Drw. no. 3350
4	1	Retaining Ring			Drw. no. 5138
3	1	Slide Bearing			Drw. no. 2918
2	1	Influent Bearing House			Drw. no. 2920
1	1	Influent centershaft			Drw. no. 4894
Part no.	Qty	Name	Material	Mod.-nr Blank Dimension Mass	Remark
Designer	Drawn by	Copy	Controlled by	Stand.	Approved
	JJ			ISO 2768-m	Scale
					1 : 4
					Replaces
					Replaced by
					Date
					2004-09-14
					Draw. no.
					2976 Edition J

HYDROTECH	Assembly Bearing		
	Influent		
	HSF2200		

Ed.	Change and/or message no.	Rev date	Made by	c-m no.
B	Drawing updated	2012-08-27	JJ	



* 3 rubber seals, 30x5 (pos 7) on the first and last filter disc.

16	2	Screw	A4	MC6S M8x50D	Art. no. 1007397			
15	28	Screw	A4	MC6S M10x32	Art. no. 1013873			
14	42	Screw	A4	MC6S M10x45	Art. no. 1014444			
13	70	Nut		M6M M10	Art. no. 1005609			
12	28	Clip			Art. no. 1013497			
11	1	Rotation stop			Art. no. 1012718			
10	2	Pin for strap, Ø8.5			Art. no. 1007401			
9	2	Pin for strap, M8			Art. no. 1007396			
8	2	Strap for filter segment			Art. no. 1006344			
7	2*	Rubber seal		30x5	Art. no. 1007731			
6	28	Filter panel seal						
5	28	Filter panel						
4	14	Segment seal, Upper			Art. no. 1006534			
3	14	Segment seal, Lower			Art. no. 1006533			
2	14	Cover for filtersegment			Art. no. 1014989			
1	14	Filter segment			Art. no. 1014988			
Pos no	Qty	Name		Material	Dimension	Remark		
Designer	Drawn by	Projection method	Controlled by	Stand.	Approved	Scale	Sheet size	Replaced by
EmS	EmS			ISO 2768-m			A3	
			Filter disc assembly Exploded view HSF2200				Sheet	Date
							1 / 1	
			Draw. no.		Edition			
3460		B						

General conditions and use for this drawing is in accordance to ORGALIME S2000



Flanged

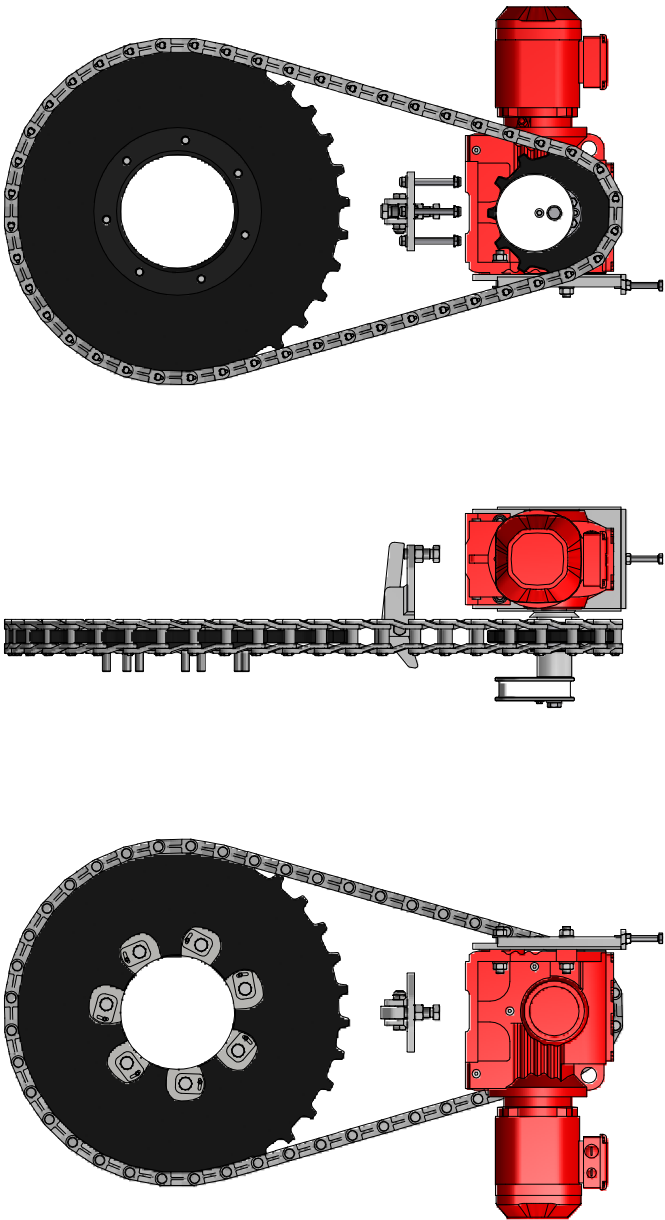
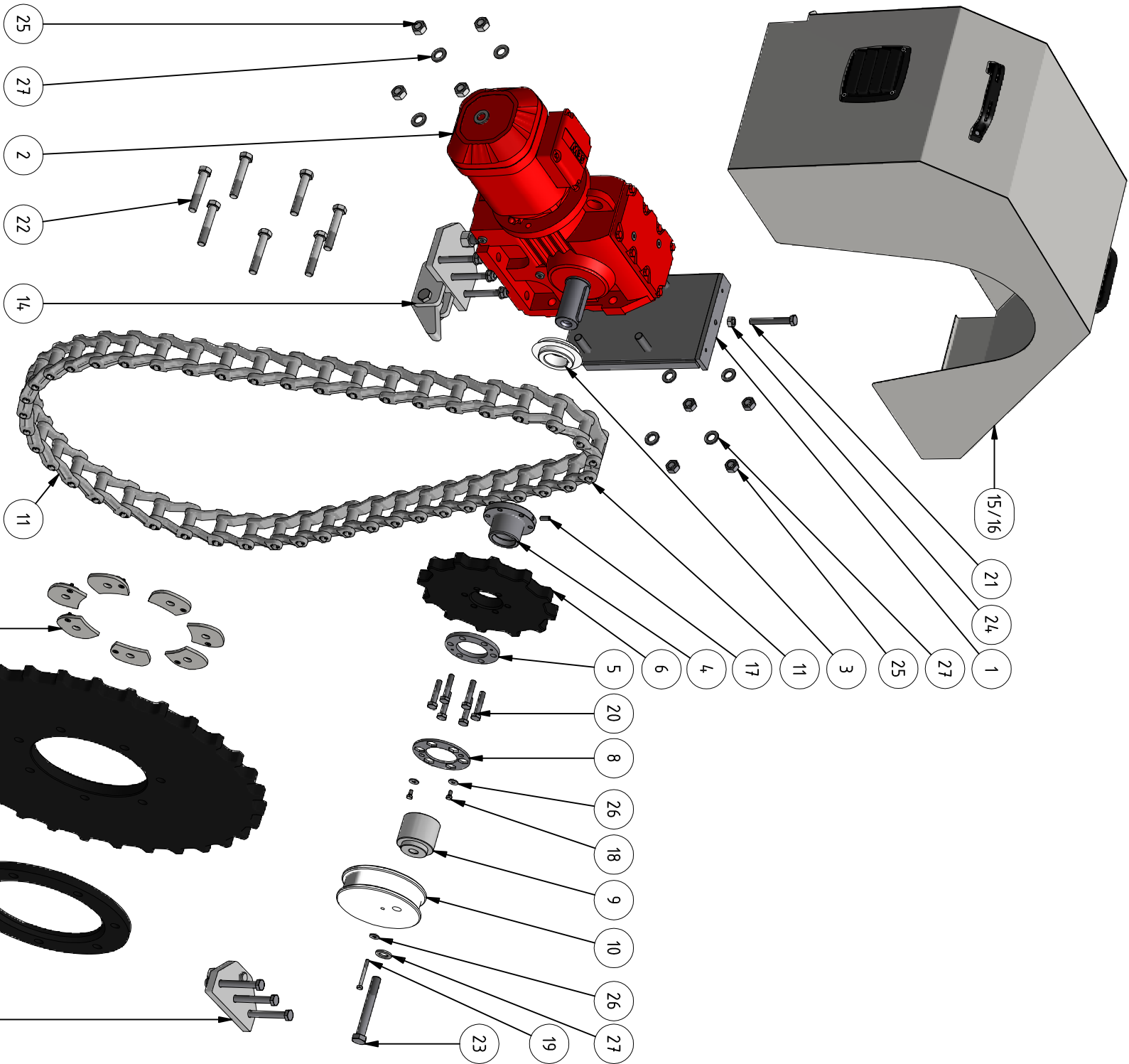
Technical drawing of a mechanical part, likely a pump housing, showing a top view and a side view. The top view features a central circular flange with eight bolt holes and a central circular opening. A callout circle with the number '1' points to a specific feature on the side view.

<h1>HYDROTECH</h1>	<p>3" Strainer Assembly drawing Can replace 3" Amiad</p>	
	<p>071015</p>	<p>DM+ 3826 Edition B</p>

HYDROTECH

3" Strainer
Assembly drawing
Can replace 3" Amiad

Draw. no	Date
3826 Edition B	071015



27	9	Washer	A4	17x30x3,0	Art. no. 350570
26	3	Washer	A4	6,4x18x1,6	Art. no. 350532
25	8	Nut	A4	M6M M16	Art. no. 350150
24	1	Nut	A4	M6M M12	Art. no. 350140
23	1	Screw	A4	M6S M16x120D	Art. no. 1008650
22	7	Screw	Bumax 88 (A4)	M6S M16x90D	Art. no. 1018790
21	1	Screw	A4	M6S M12x90H	Art. no. 1015075
20	6	Screw	A4	M6S M10x50D	Art. no. 350990
19	1	Screw	A4	M6S M6x55D	Art. no. 1008805
18	2	Screw	A4	M6S M6x12H	Art. no. 350770
17	1	Screw	A4	MSK6SS M8x20	Art. no. 352120
16	1	Motor cover HSF2200-1FN			Dr-w. no. 5204
15	1	Motor cover HSF2200-2FN			Dr-w. no. 5202
14	1	Lever brackets for drum			Dr-w. no. 2943
13	7	Washer with locking device			Dr-w. no. 5735
12	1	Spacer			Dr-w. no. 3752
11	1	Drive chain, H78 Narrow		n = 4,7 links	Art. no. 1016604
10	1	Exciter wheel			Dr-w. no. 2925
9	1	Spacer for backwash drive			Dr-w. no. 2934
8	1	Locking plate			Dr-w. no. 5205
7	1	Plastic sprocket, Z=32			Dr-w. no. 3750
6	1	Plastic sprocket, Z=12			Dr-w. no. 3722
5	1	Flange for hub			Dr-w. no. 5201
4	1	Hub Ø45 shaft			Dr-w. no. 3724
3	1	Reject ring			Dr-w. no. 3167
2	1	Helical-worm geared motor			S77DRE90M4, M1B
1	1	Adjustment plate for motor			Dr-w. no. 3714

Part no.	Qty	Name		Material	Mod.-nr	Blank	Dimension	Blank	Remark
Designer	Drawn by	Copy	Controlled by	Stand.	Approved	Scale	Replaces	Replaced by	
EMS	EMS		ISO 2768-m						
HYDROTECH			Assembly drive						
			Motor adjusted from above H78						
			Disclfilter HSF2200						
			Draw. no.						
			4259 Edition G						
			Date						
			2010-04-08						

G	Pos 13 modified	2014-07-15	KÅS
F	Pos. 22 changed to Bumax88	2014-05-23	EMS
E	Drawing updated	2013-05-16	JJ
D	4,7 links was 46 links	2012-11-05	EMS
C	M10x50D was M12x50H	2011-12-08	EMS
B	M12x90H was M12x100	2011-09-16	EMS
Ed.	Change and/or message no.	Date	Made by c-m no.

V

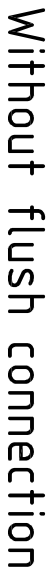
A

All property rights and use remain to HYDROTECH AB Sweden

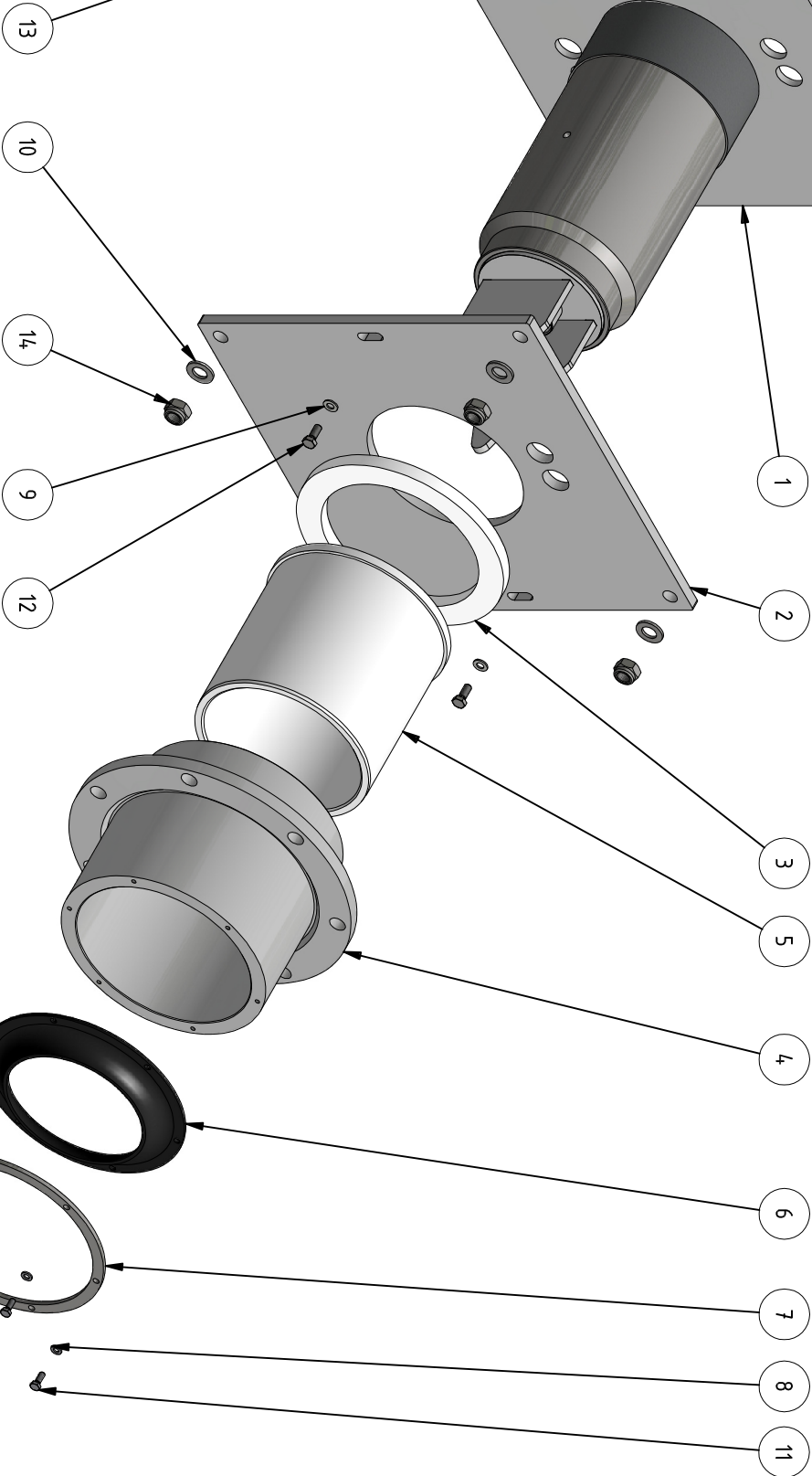
General conditions and use for this drawing, is in accordance to ORGALIME S2000



Scale 1 : 5

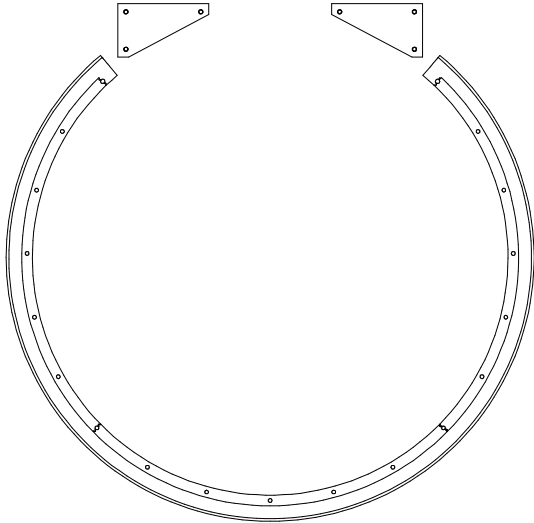
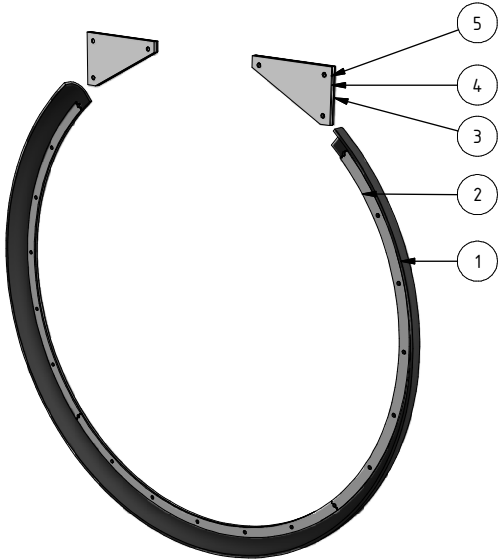


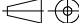

D	Exploded view added	2014-02-19	MB	
C	New drw. no. in parts list	2012-11-12	JJ	
B	Option with flush connection added	2012-04-04	JJ	
Ed.	Change and/or message no.	Date	Made by	c-m no.



14	4	Nut locking	A4		M6NM M16	Art. no. 350350
13	4	Screw	A4		M6S M16x120D	Art. no. 1008650
12	2	Screw	A4		M6S M8x20H	Art. no. 350870
11	6	Screw	A4		M6S M6x16H	Art. no. 350780
10	4	Washer	A4		17x30x3,0	Art. no. 350570
9	2	Washer	A4		8,4x16x1,6	Art. no. 350540
8	6	Washer	A4		6,4x12x1,6	Art. no. 350530
7	1	Retaining Ring				Drw. no. 5139
6	1	Seal for Effluent Bearing				Drw. no. 2939
5	1	Slide Bearing				Drw. no. 2918
4	1	Effluent bearing house				Drw. no. 5140
3	1	Axial bearing				Drw. no. 5136
2	1	Effluent center shaft bracket				Drw. no. 2938
1	B	Effluent center shaft				Drw. no. 4970

Part no.	Qty	Name			Material	Mod- in Blank Dimension Mass	Remark	
		Drawn by	Copy	Controlled by				
Designer	JJ			ISO 2768-m	Approved	Scale	Replaces	Replaced by
HYDROTECH				Assembly Effluent Bearing				
HSF2200, HSF2600				HSF2200, HSF2600				
Draw. no.							4295 Edition D	
							2010-05-03	



5	0-4	Spacer for axial bearing, t=8					Drw. no. 2941	
4	0-2	Spacer for axial bearing, t=5					Drw. no. 5137	
3	0-2	Spacer for axial bearing, t=3					Drw. no. 3141	
2	3	Clamp bar					Drw. no. 4864	
1	1	Rubber lip for inlet					Drw. no. 2931	
Pos no	Qty	Name			Material	Dimension	Remark	
Designer	Drawn by	Projection method	Controlled by	Stand.	Approved	Scale	Sheet size	Replaced by
	JJ			ISO 2768-m		1 : 10	A3	
			Inlet seal assembly				Sheet	Date
			HSF2200				1 / 1	2012-12-06
							Draw. no.	
							5151	A

SERVICE

HSF2204/24-1F-2F

Checklist / service report

To be done on every visit

☐

Check backwash pressure

Remarks:

☐

Check panels for damage

Remarks:

☐

Visually inspect the inside of the unit

Remarks:

☐

Check the nozzles for clogging

Remarks:

☐

Lubricate all grease points of the unit

Remarks:

☐

Check drive chain tension

Remarks:

☐

Visually inspect the outside of the unit, clean if needed

Remarks:

SERVICE

HSF2204/24-1F-2F

To be done on yearly visit

☐

Check oil condition in drive unit according to separate manual

Remarks:

☐

Check drum bearings for wear

Remarks:

☐

Check shaft gaskets for wear

Remarks:

☐

Check inlet gasket for wear

Remarks:

SERVICE

HSF2204/24-1F-2F

To be done every five years

Replace the parts from service kit

OK

<input type="checkbox"/>	Slide bearing for drum
<input type="checkbox"/>	Rubber lip inlet seal
<input type="checkbox"/>	V-sealing, V-180A
<input type="checkbox"/>	Axial bearing
<input type="checkbox"/>	Rubber sealing shaft
<input type="checkbox"/>	Sprocket wheel motor 2200 Z=12
<input type="checkbox"/>	Wheel to backwash unit 2200-N
<input type="checkbox"/>	Bearing bracket 2200
<input type="checkbox"/>	Bearing fir spray water pipe
<input type="checkbox"/>	Swivel connection, 2"
<input type="checkbox"/>	Cartridge, 200
<input type="checkbox"/>	Rubber lip seal
<input type="checkbox"/>	Guidingblocks Drum 2200M T=8

Check and if needed replace strategic and critical parts

OK

Replaced

<input type="checkbox"/>	Backwash nozzles	Qty: <input type="text"/>
<input type="checkbox"/>	Filter panels	Qty: <input type="text"/>
<input type="checkbox"/>	Drive chain	Qty: <input type="text"/>
<input type="checkbox"/>	Sprocket wheel, drum	Qty: <input type="text"/>
<input type="checkbox"/>	SEW drive unit	Qty: <input type="text"/>
<input type="checkbox"/>	Backwash pump	Qty: <input type="text"/>

Remarks:
