

SERVICE

HSF2612/30-1F-2F

Thank you for choosing a Hydrotech filter.

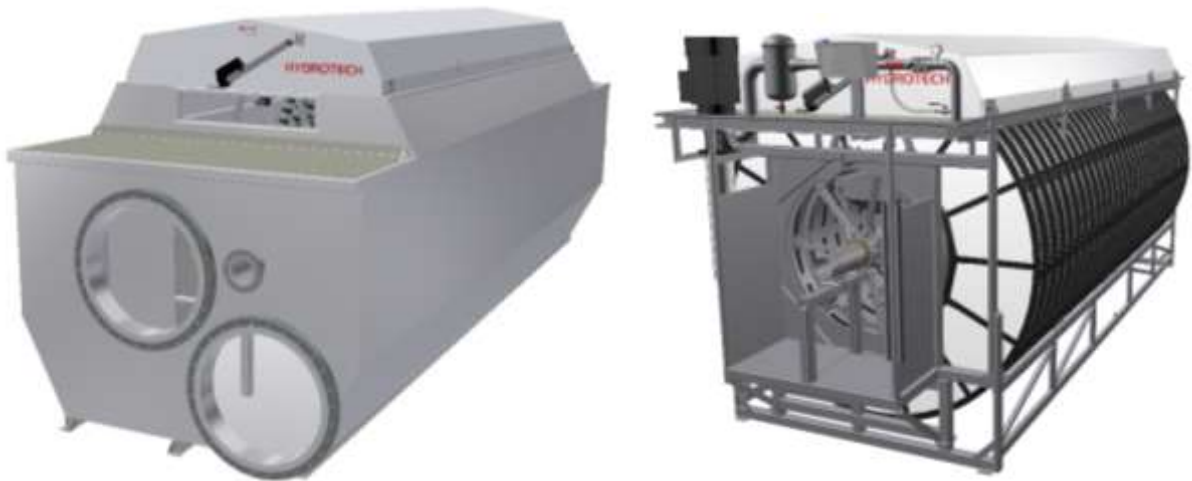
It is a reliable machine that will run for a long time with minimum care and service. Indeed, any mechanical equipment requires annual maintenance in order to operate efficiently and with as little down time as possible. This is also the case with your Hydrotech Discfilter HSF2612/30, 1F or 2F.

On the next pages, you will find recommendations for maintenance, parts to change and drawings.

If you don't have the possibility to do the maintenance yourself, Hydrotech will be pleased to send you a service offer or recommend a reliable technician that can assist you.

Apart from the periodic maintenance mentioned in the **Operation & Maintenance manual** we recommend a large service every fifth year where at least all parts in the **5 year service kit** are replaced.

To order spare parts or a service from Hydrotech and also to get the latest updated prices, contact Hydrotech.



SERVICE

HSF2612/30-1F-2F

5 year service kit

Art. N°	N° on drawing	Description	Qty	Version
1008139	4295-D pos.3	Axial bearing	1	
1008030	4295-D pos.5	Slide bearing for drum	2	
1008493	4295-D pos.6	Rubber sealing shaft	1	
1010585	4376-E pos.7	V-sealing, V-180A	1	
1012535	4376-E pos.6	Seal for influent bearing	1	
1018432	4620-F pos.7	Backwash wheel shaft Ø50x65	1	
1018434	4620-F pos.8	Wheel for backwash pipe HSF2600 Z=13	1	
1010967	4375-E pos.22	Manometer 0-16 bar 1/4" SI	1	
1014114	5151-A pos.1	Rubber lip seal for inlet	1	
1012777	5151-A pos.4	Guiding blocks drum	2	
1019684	4116-H pos.8	Sprocket wheel motor Z=14	1	
1013194	3826-B pos.3	Strainer, O-sealing 180x4,0 NBR70	1	
1006903	3826-B pos.4	Strainer, cartridge 200 µm	1	
1014927	4620-F pos.2	Swivel	1	-1F only
1012730	4351-E pos.2	Swivel	1	-2F only

Strategic spare parts

Art. N°	N° on drawing	Description	Qty
1022212	4620-F pos.4 & pos.5	Backwash nozzles	14/disc
	4372-B pos.1+pos.10	Filter panel, with seal	28/disc
1016605	4116-H pos.7	Drive chain	1
1013116	4116-H pos.9	Sprocket wheel drum Z=42	1

Critical spare parts

Art. N°	N° on drawing	Description	Qty
	4375-E pos.28	Backwash pump	1
	4116-H pos.3	Drive gear/motor	1

Definitions:

5 year service kit:

Parts to be changed after 5 years of operation

Strategic spare parts:

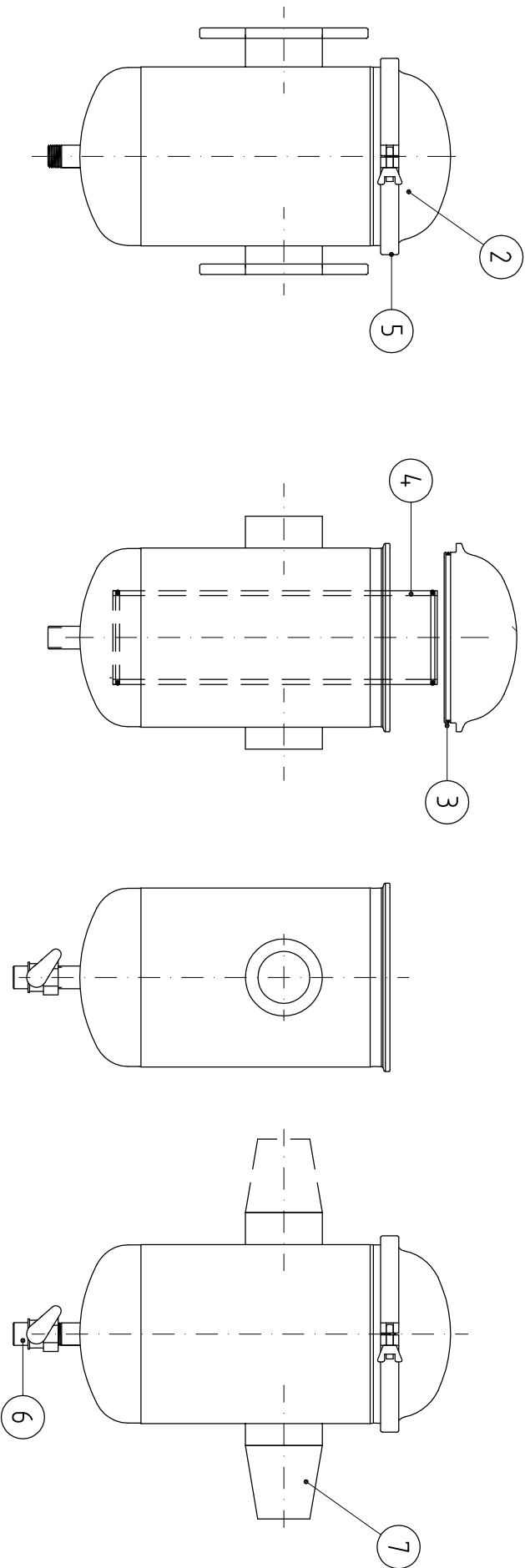
Parts with short lead time (always on Hydrotech stock) which are vital for the operation of the unit.

Critical spare parts:

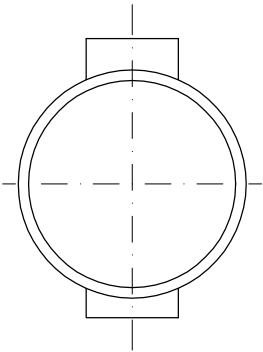
Parts with long lead time which are vital for the operation of the unit, contact Hydrotech for precise delivery time.

PROPERTY OF DRAWINGS AND PRESCRIPTIONS

All property, rights and use remain to  **HYDROTECH** AB, Sweden
General conditions and use for this drawing is in accordance to ORGALIME S2000



Flanged



For welding

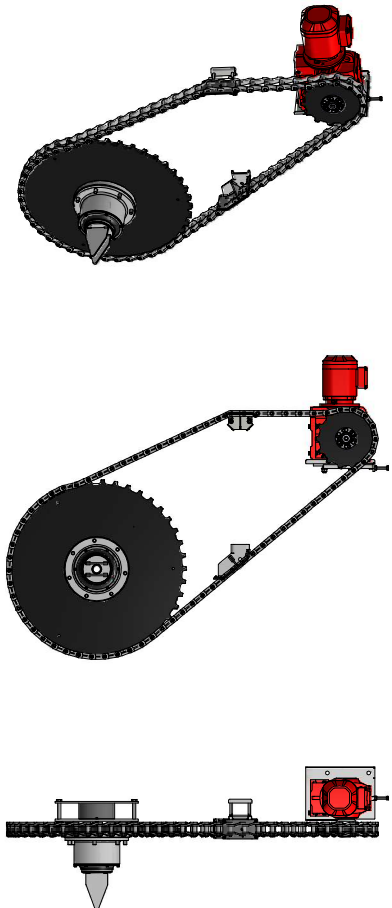
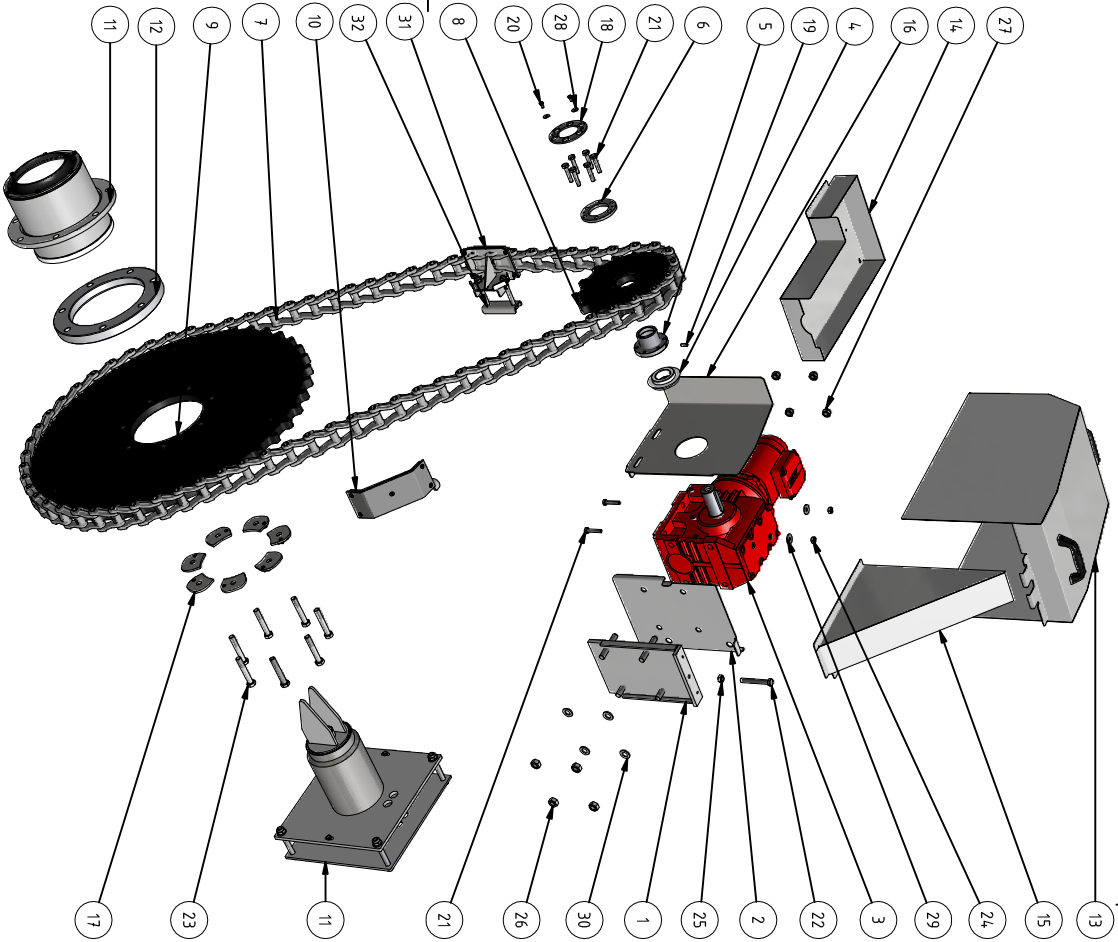
Ed	Change and/or message no	Date	Made by	c-m no
			V	

7	1 Reducer	AISI 316L	88.9/60.3	
6	1 Valve		3/4"	Art. No. 1011050
5	1 Clamp ring	AISI 316L	Ø200/217	Art. No. 1013204
4	1 Strainer cage	316 / PP	200 micron	Art. No. 1006903
3	1 O-ring	Nitrile	180x4,0	Art. No. 1013194
2	1 Top cap	AISI 316L		Draw. No. 3927
1	1 Filter house	AISI 316L		Draw. No. 3550
Part no	Quantity	Name	Material	Mod- or Blank Dimension
Designer	Drawn by	Copy	Controlled by	Stand.
Per	Per		ISO 2768-m	Approved
				Scale
				1:5
HYDROTECH				
3" Strainer Assembly drawing				
Can replace 3" Amiad				
Draw no	Replaces			
3826 Edition B	Date			
	071015			
Remark				

PROPERTY OF DRAWINGS AND PRESCRIPTIONS

All property rights and use remain toHYDROTECHAB Sweden

General conditions and use for this drawing is in accordance to ORGALIME S2000



H	Pos 17 modified	2014-07-15	KÅS
G	Pos. 23 changed to Bumax88	2014-05-22	EMS
F	New chain guide	2013-10-10	MA
E	New locking plate	2013-05-30	JJ
D	Motor covers modified. Redrawn.	2013-04-12	JJ
C	Chain type changed. Pos 20 & 21 added	2012-03-27	FT
B	New motor	2011-06-13	JJ
Ed	Change and/or message no.	Date	Made by c-m no

S77DRE90M4, M1A is used
on mirrored filters

32	1	Chain guide 2F			Art. no. 1017654
31	1	Chain guide 1F			Art. no. 1017653
30	4	Washer	A4	17x30x3,0	Art. no. 350570
29	2	Washer	A4	10,5x30x2,5	Art. no. 350552
28	2	Washer	A4	6,4x18x1,6	Art. no. 350532
27	4	Nut locking	A4	M6xM M16	Art. no. 350350
26	4	Nut	A4	M6xM M16	Art. no. 350150
25	1	Nut	A4	M6xM M12	Art. no. 350140
24	2	Nut	A4	M6xM M10	Art. no. 350130
23	7	Screw	Bumax 88 (A4)	M6S M16x100D	Art. no. 1014574
22	1	Screw	A4	M6S M12x90H	Art. no. 1015075
21	8	Screw	A4	M6S M10x50D	Art. no. 350990
20	2	Screw	A4	M6S M6x12H	Art. no. 350770
19	1	Screw	A4	MSK6SS M8x20	Art. no. 352120
18	1	Locking plate			Dr-w. no. 5205
17	7	Washer with locking device			Dr-w. no. 5735
16	1	Partition wall			Dr-w. no. 5292
15	1	Chain Guard			Dr-w. no. 4345
14	1	Motor Bottom			Dr-w. no. 4339
13	1	Motor Cover			Dr-w. no. 4338
12	1	Distance			Dr-w. no. 4369
11	1	Effluent bearing assembly			Dr-w. no. 4295
10	1	Chain wheel support			Dr-w. no. 4335
9	1	Drive sprocket		Z = 42	Dr-w. no. 4200
8	1	Drive sprocket		Z = 14	Dr-w. no. 4271
7	1	Drive Chain		H78 Narrow	L = 12 links
6	1	Flange for hub			Dr-w. no. 5201
5	1	Hub Ø45 shaft			Dr-w. no. 3724
4	1	Reject ring			Dr-w. no. 3167
3	1	Helical-worm geared motor			S77DRE90M4, M1B
2	1	Bracket			Dr-w. no. 4341
1	1	Adjustment plate for motor			Dr-w. no. 3714
Part no.	Qty	Name	Material	Pos. or Blank	Remark
Designer	Drawn by	Copy	Controlled by	Stand	Replaces
Per	JJ		ISO 2768-m	Approved	Replaced by
Date					

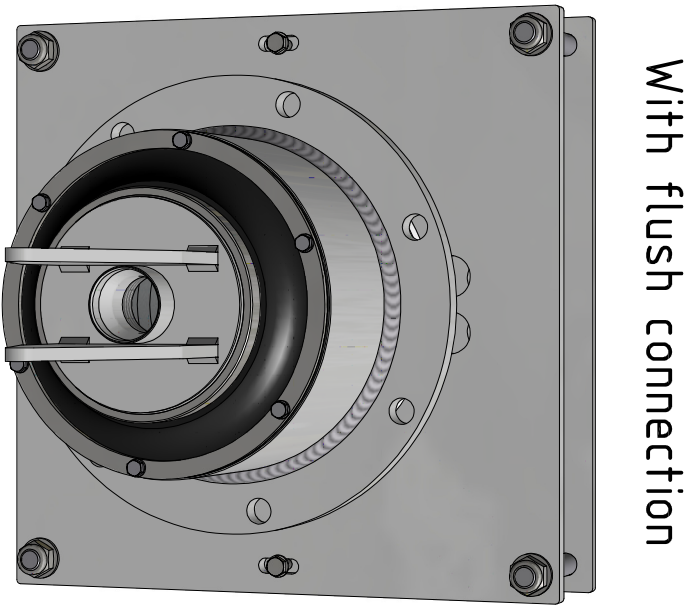
HYDROTECH					
Assembly Drive					
HSF 2600-1F/2F					
4116 Edition H					

HYDROTECH

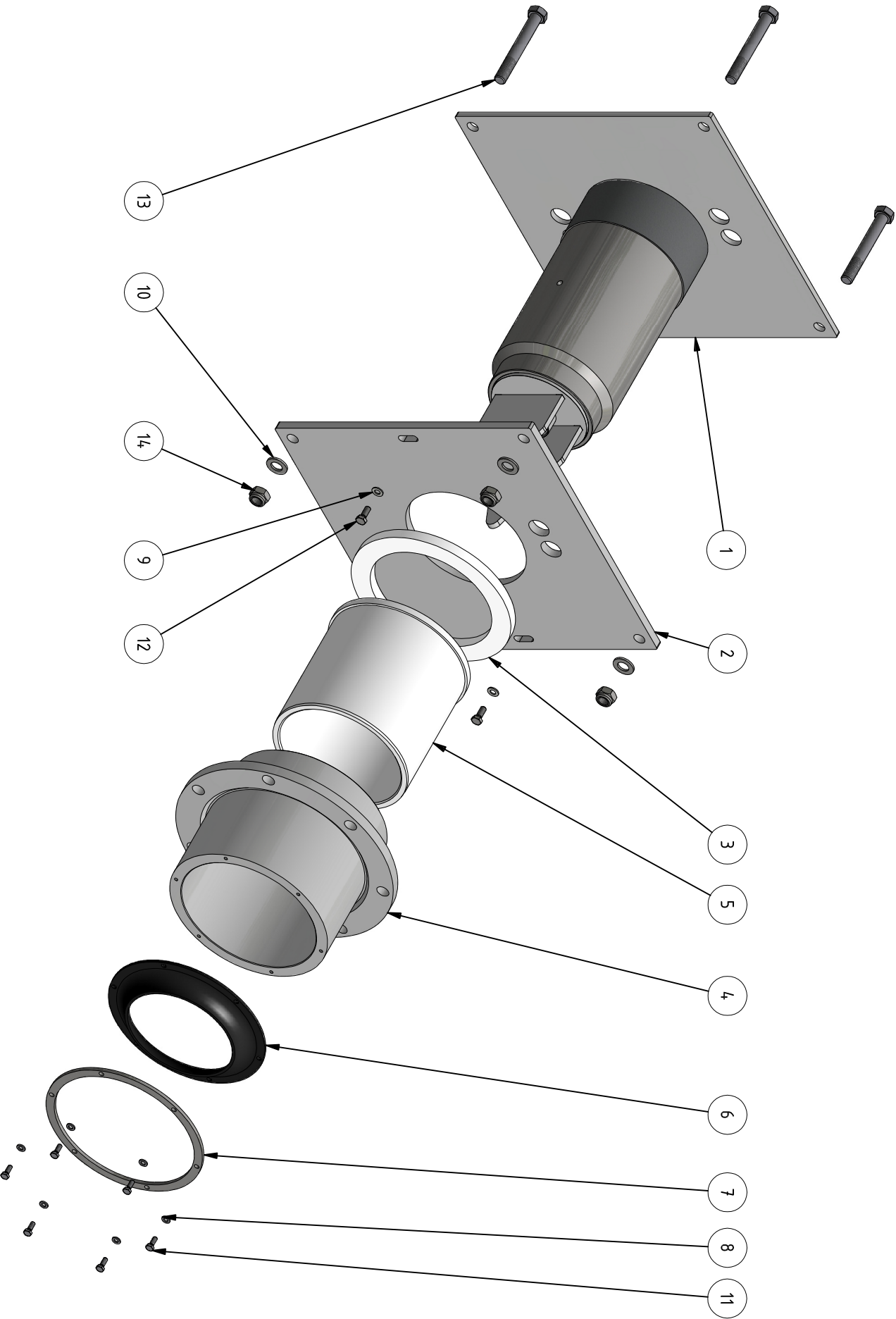
Assembly Drive
HSF 2600-1F/2F

Draw no.
4116 Edition H

Date
2010-09-13



Scale 1 : 5



D	Exploded view added	2014-02-19	MB	
C	New drw. no. in parts list	2012-11-12	JJ	
B	Option with flush connection added	2012-04-04	JJ	
Ed.	Change and/or message no.	Date	Made by	C-m no.

14	4	Nut locking	A4	M6NM M16	Art. no. 350350				
13	4	Screw	A4	M6S M16x120D	Art. no. 1008650				
12	2	Screw	A4	M6S M8x20H	Art. no. 350870				
11	6	Screw	A4	M6S M6x16H	Art. no. 350780				
10	4	Washer	A4	17x30x3,0	Art. no. 350570				
9	2	Washer	A4	8,4x16x1,6	Art. no. 350540				
8	6	Washer	A4	6,4x12x1,6	Art. no. 350530				
7	1	Retaining Ring			Drw. no. 5139				
6	1	Seal for Effluent Bearing			Drw. no. 2939				
5	1	Slide Bearing			Drw. no. 2918				
4	1	Effluent bearing house			Drw. no. 5140				
3	1	Axial bearing			Drw. no. 5136				
2	1	Effluent center shaft bracket			Drw. no. 2938				
1	B	Effluent center shaft			Drw. no. 4970				
Part no.	Qty	Name		Material	Mod-ur Blank Dimension Mass	Remark			
Designer	Drawn by	Copy	Controlled by	Stand.	Approved	Scale	Replaces	Replaced by	
	JJ			ISO 2768-m					
HYDROTECH			Assembly Effluent Bearing					Draw. no.	Date
			HSF2200, HSF2600					4295 Edition D	2010-05-03

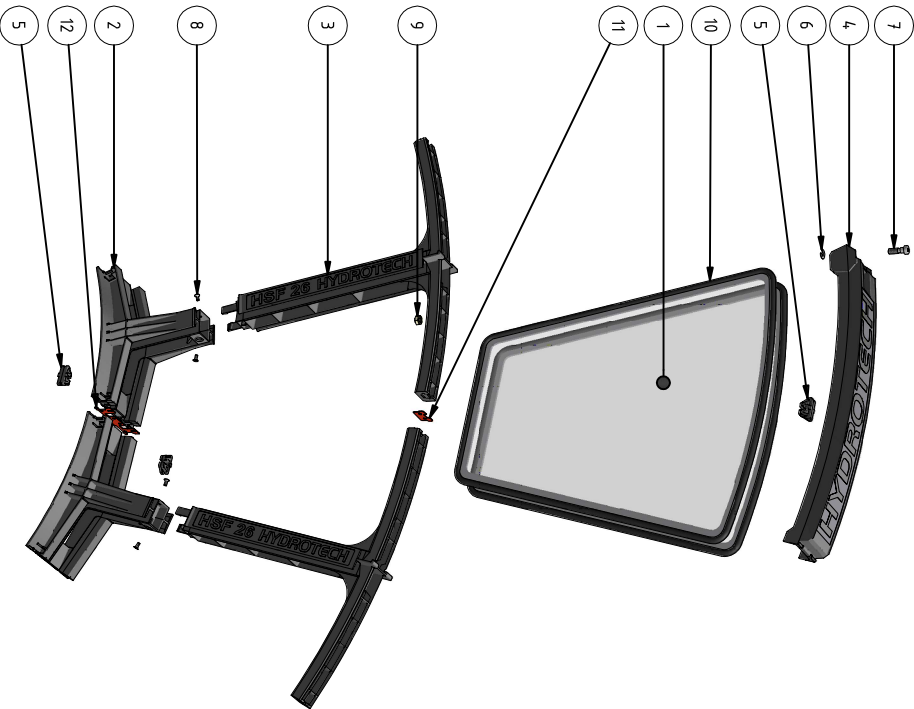
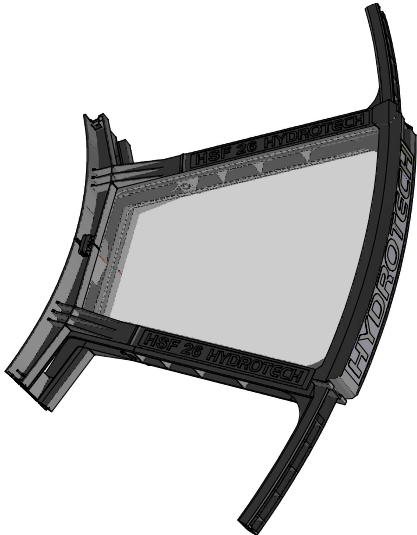
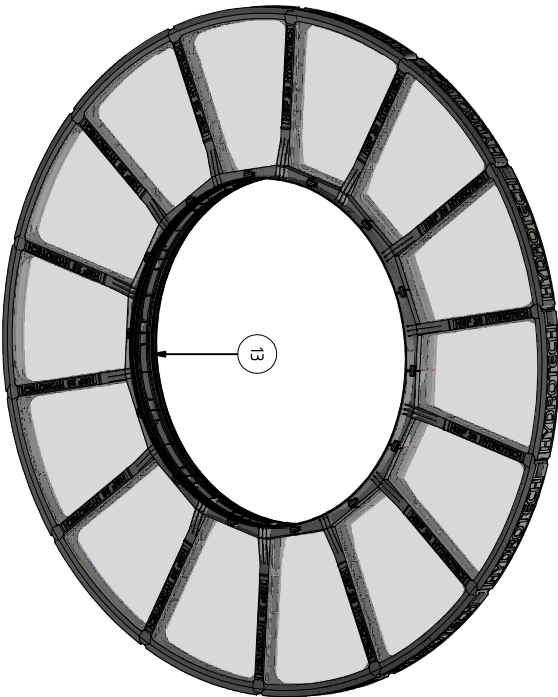
General conditions and use for this drawing, is in accordance to ORGALIME S2000



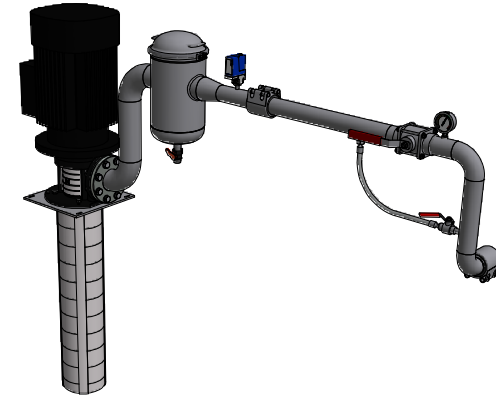
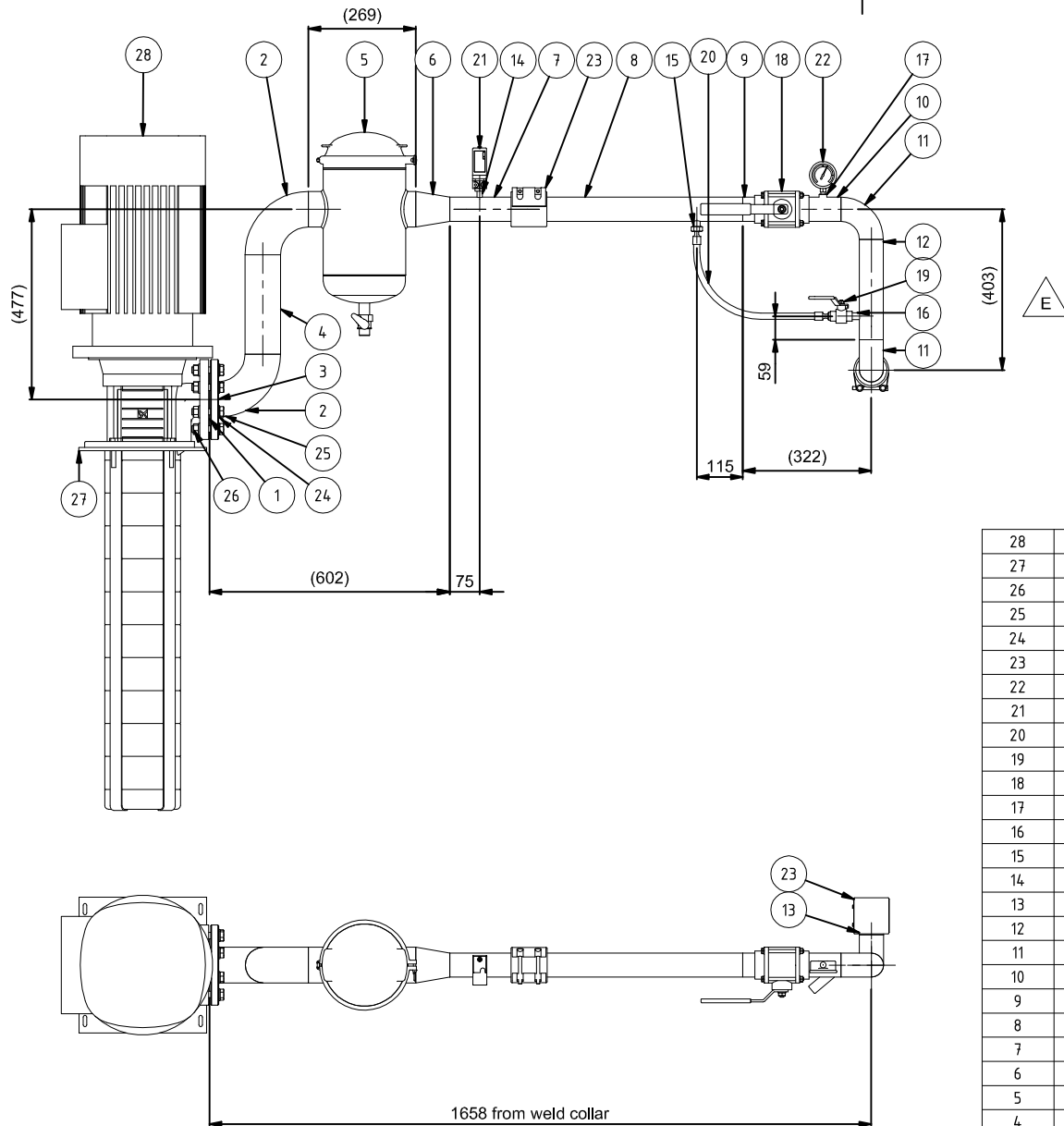
Type	A
2612	77
2614	91
2616	105
2618	119
2620	133
2622	147
2624	161
2626	175
2628	189
2630	203

20	4	Screw	A4	MES M8x20H	Art. no. 1015412
19	1	Nut	A4	M6M M12	Art. no. 350140
18	1	Screw	A4	M6S M12x50H	Art. no. 351050
17	2	Washer	A4	10.5x20x2	Art. no. 350550
16	1	Nut locking	A4	M6NM M10	Art. no. 350330
15	1	Screw	A4	M6S M10x80H	Art. no. 351010
14	2	Washer	A4	8.4x16x1.6	Art. no. 350540
13	1	Nut locking	A4	M6NM M8	Art. no. 350320
12	1	Screw	A4	M6S M8x90D	Art. no. 1001398
11	1	Half socket S1	AlSi 316L	2"	L = 26
10	1	Pipe	AlSi 316L	Ø60,3 x 2	L = 168
9	1	Lever arm for actuator			Drw. no. 4514
8	1	Sprocket wheel			Drw. no. 5511
7	1	Shaft			Drw. no. 5513
6	1	Lever arm			Drw. no. 5512
5	14	Nozzle outer complete			Drw. no. 4312
4	A	Nozzle inner complete			Drw. No. 4373
3	1	Swivel holder			Drw. No. 2614
2	1	Swivel			Drw. no. 3942
1	1	Backwash Header			Drw. No. 4124
Part no.	Qty	Name	Material	Prod. or Blank	Remark
Designer	Drawn by	Copy	Controlled by	Stand.	Replaces
Per	JJ		ISO 2768-m	Scale	Replaced by
Assembly Backwash Header					Date
HSF 2600-2F					2010-06-22
4351 Edition D					

B	Strap for disc moved to 5224	2013-07-04	JJ	
Edi	Change and/or message no.	Date	Made by	c-m no.



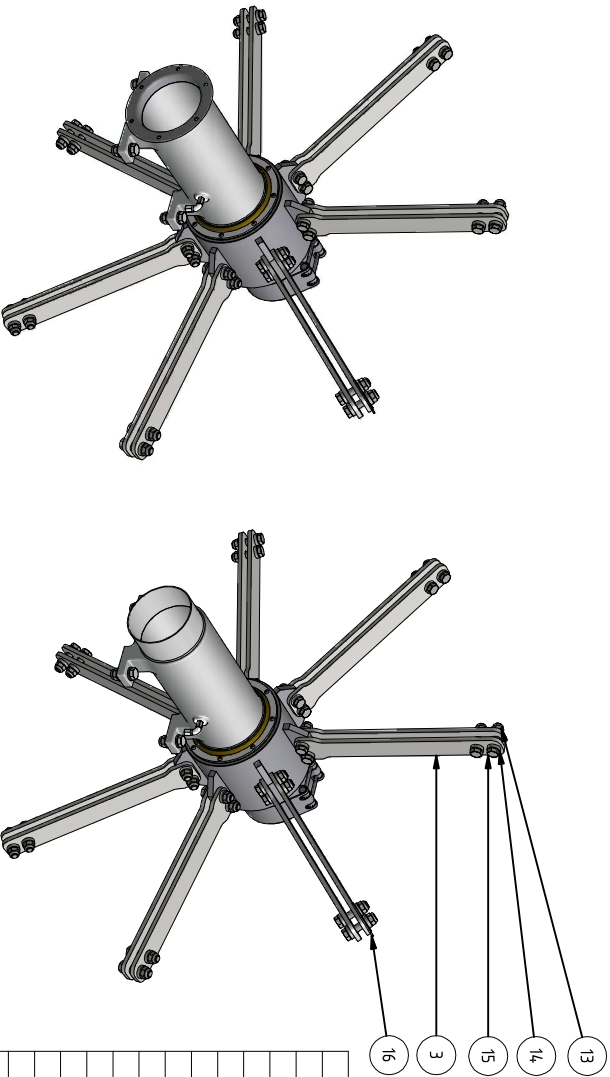
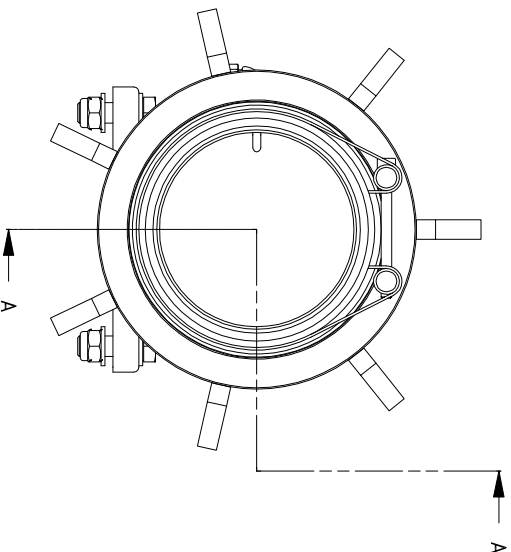
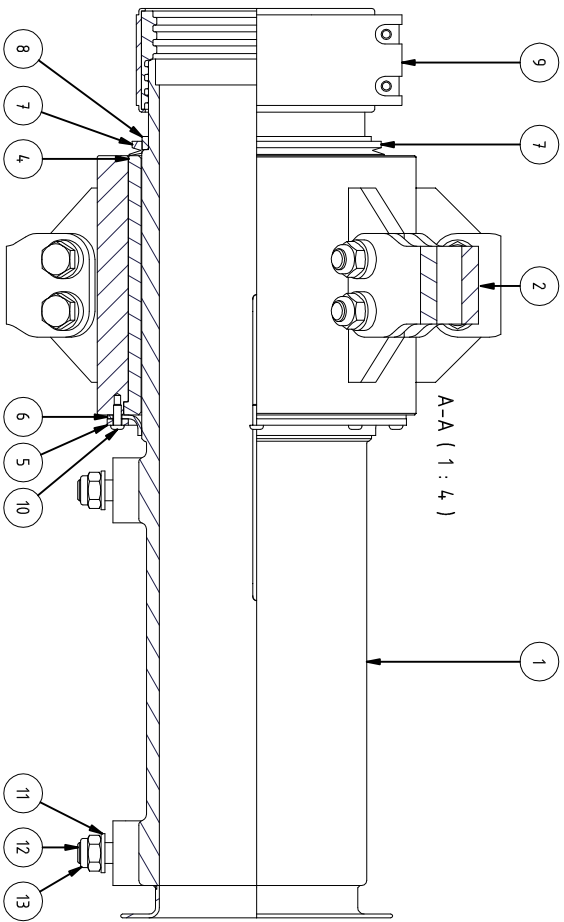
13	2	Rubber Seal, self-adhering	EPDM foam	30x5	Art. no. 1007731			
12	14	Seal bottom part	Regufoam		Art. no. 1013548			
11	14	Seal top part	Regufoam		Art. no. 1013549			
10	28	EPDM Filterpanel Seal	EPDM		Art. no. 1013772			
9	14	Nut	Nylon-6/6	M6x M10	Art. no. 1005609			
8	28	Screw	A4	MFT M5x12H	Art. no. 1013874			
7	14	Screw			Drw. no. 3935			
6	14	Clip			Drw. no. 3934			
5	4,2	Clamp			Drw. no. 3895			
4	14	Cover			Drw. no. 3894			
3	14	Top part			Drw. no. 3893			
2	14	Bottom part			Drw. no. 3892			
1	28	Filterpanel						
Part no.	Qty	Name	Material	Prod.-nr Blank Dimension Pass	Remark			
Designer	Drawn by	Copy	Controlled by	Stand	Approved	Scale	Replaces	Replaced by
Per	JJ			ISO 2768-m				Date
HYDROTECH		Disc		HSF2600		Draw. no. 4372 Edition B		
						2010-10-04		



28	1	MTR 45, 64			
27	1	Pump bracket MTR 45, 64	AISI 316L		Drw. no. 3840
26	8	Hex Nut	A4	M6M M16	
25	8	Hex-Head Bolt	A4	M6S M16 x 70	
24	16	Washer	A4	17 x 30 x 3	
23	2	Teekay Axilock		Ø60,3	Art. no. 1008807
22	1	Manometer			Art. no. 1010967
21	1	Pressure switch			Art. no. 1007204
20	1	Braided hose		3/8"	L=450
19	1	Ball Valve		3/8"	
18	1	Ball Valve		2"	
17	1	Weld socket	AISI 316L	1/4"	L=11
16	1	Nipple	AISI 316L	3/8"	L=31
15	1	Nippel	AISI 316L	3/8"	Drw. no. 2700
14	1	Nipple	AISI 316L	1/4"	L=30
13	1	Pipe	AISI 316L	Ø60,3	L=45
12	1	Pipe	AISI 316L	Ø60,3	L=251
11	2	90° Elbow	AISI 316L	Ø60,3	
10	1	Nipple	AISI 316L	2"	L=100
9	1	Nippel	AISI 316L	2"	L=50
8	1	Pipe	AISI 316L	Ø60,3	L=534
7	1	Pipe	AISI 316L	Ø60,3	L=195
6	1	Reducer	AISI 316L	Ø88,9 - Ø60,3	L=85
5	1	Strainer			Drw. no. 3826
4	1	Pipe	AISI 316L	Ø88,9	L=249
3	1	Loose Plate Flange		DN80	PN16
2	2	90° Elbow	AISI 316L	Ø88,9	
1	1	Weld Collar	AISI 316L	DN80	L=20

E	Pos 12 shortened 8mm	2013-04-02	FT	189
D	Pos 12-13 modified	2012-09-13	JJ	188
C	Ø60,3 Teekay added	2011-10-18	JJ	
B	Inlet channel extended	2011-01-17	JJ	
Ed.	Change and/or message no.	Date	Made by	c-m no.

Part no.	Qty	Name	Material	Mod.-nr Blank Dimension Mass	Remark
Designer	Drawn by	Copy	Controlled by	Stand.	Approved
Per	JJ			ISO 2768-m	
HYDROTECH Backwash Plumbing MTR 45, 64 HSF 26					Replaces
					Replaced by
					Date
					2010-08-31
					Draw. no.
					4375 Edition E

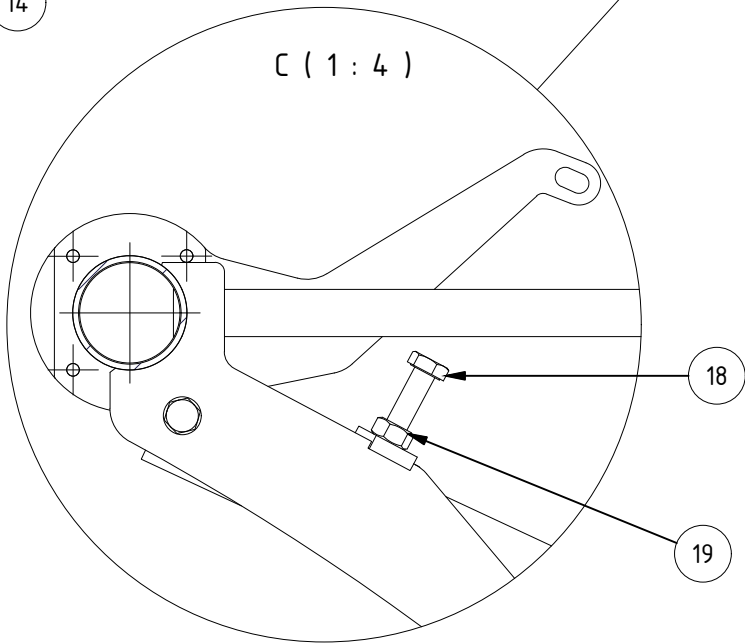
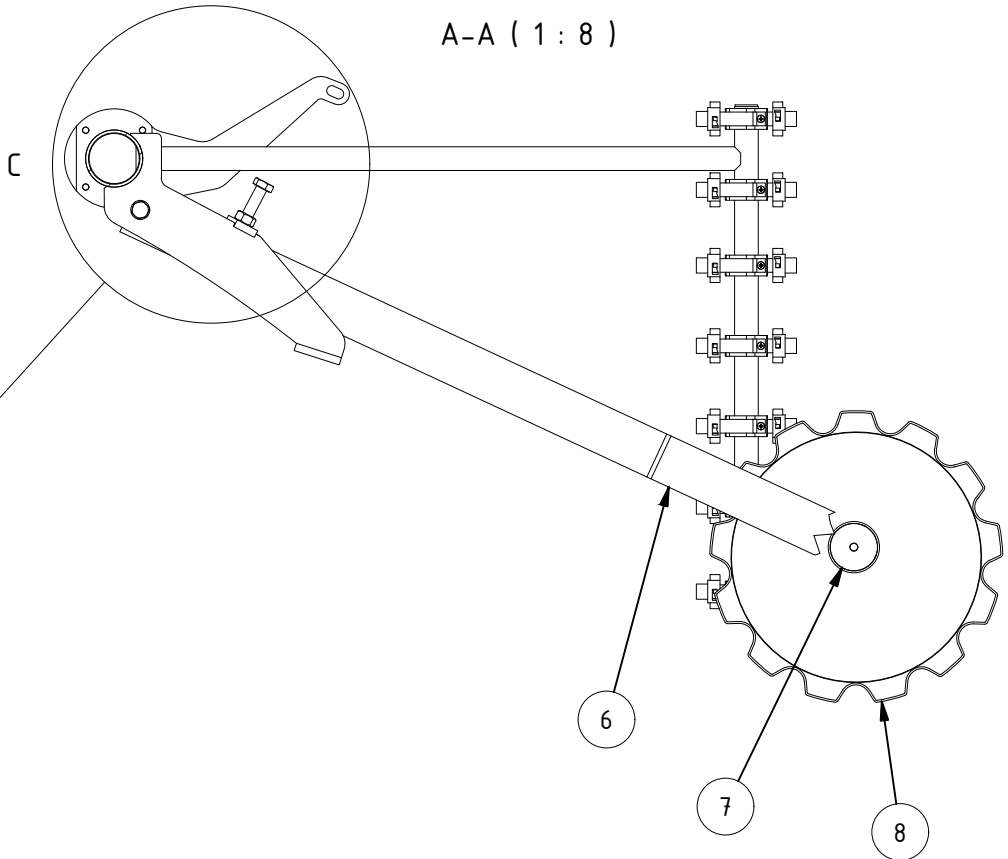
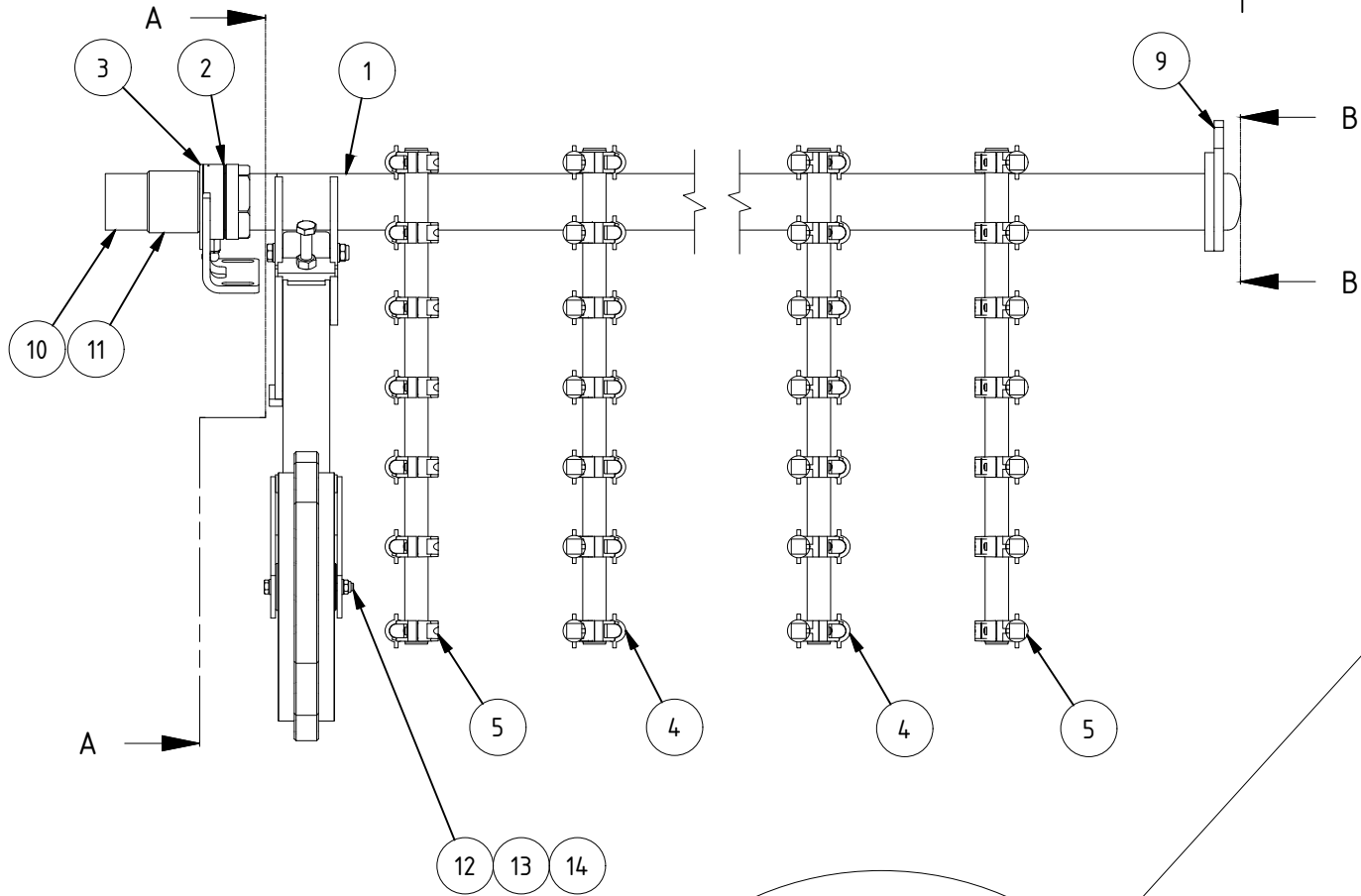


For flush valve

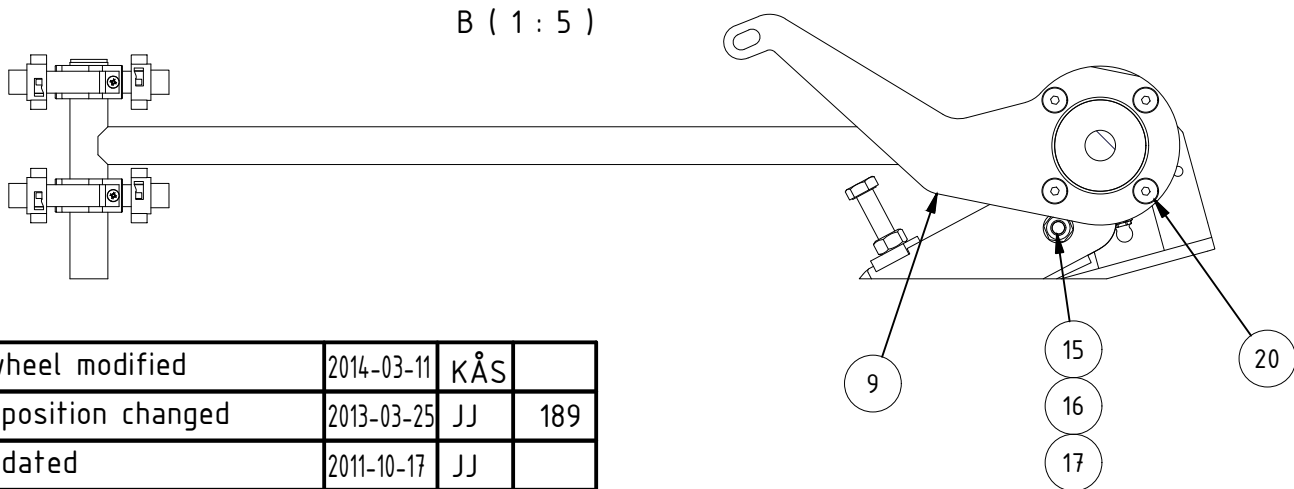
Pipe connection

E	Drum scraper added	2015-02-05	JJ	
D	New bolt joints on drum spokes	2014-05-31	JJ	190
C	Pos 4 new drw. no. 5138	2012-10-12	JJ	
B	New Drw. no. to Pos 1	2012-04-03	JJ	
Ed	Change and/or message no.	Date	Made by	c-m no.

Part no.	Qty	Name	Material	Not in Blank Dimension Pass	Remark
16	1	Drum scraper			Drw. no. 5318
15	28	Screw	A4	M6S M16x700	Art. no. 1001993
14	56	Washer	A4	18x30x8	Art. no. 1017685
13	32	Nut locking	A4	M6NH M16	Art. no. 350350
12	4	Screw	A4	M6S M16x50H	Art. no. 1010417
11	8	Washer	A4	17x30x3,0	Art. no. 350570
10	8	Screw	A4	MKS M6x16H	Art. no. 1005612
9	1	Teekay Connection		150/168,3	Art. no. 1008596
8	1	Sleeve			Drw. no. 3351
7	1	Forsheda V-ring V-180A			Art. no. 1010585
6	1	Seal for influent bearing			Drw. no. 3350
5	1	Retaining Ring			Drw. no. 5138
4	1	Slide Bearing			Drw. no. 2918
3	14	Dum spoke			Drw. no. 5216
2	1	Influent Bearing House			Drw. no. 4304
1	1	Influent center shaft			Drw. no. 4894
Part no.	Qty	Name	Material	Not in Blank Dimension Pass	Remark
Designer	Drawn by	Copy	Controlled by	Stand	Approved
JJ	JJ		ISO 2768-m		
HYDROTECH			Assembly Bearing	Scale	1 : 4
Influent			HSF2600	Draw. no.	4376 Edition E
				Date	2010-08-26



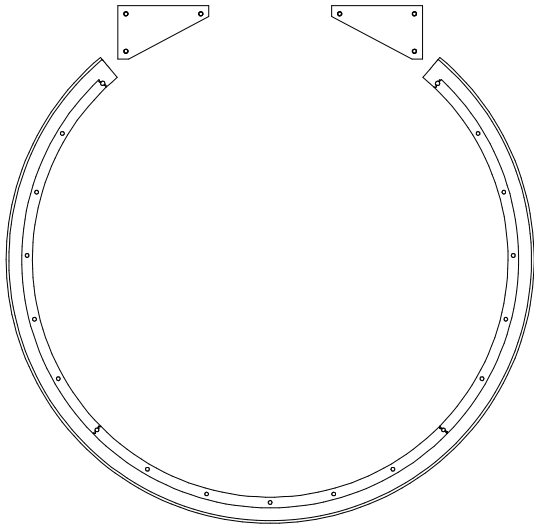
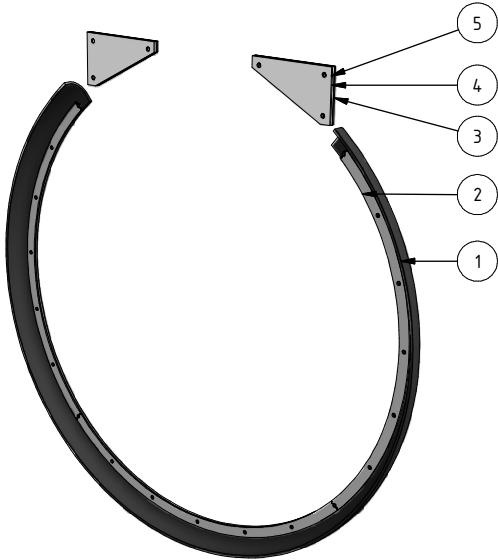
Type	A
2612	77
2614	91
2616	105
2618	119
2620	133
2622	147
2624	161
2626	175
2628	189
2630	203

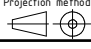



20	4	Screw	A4	MF6S M8x20H	Art. no. 1015412
19	1	Nut	A4	M6M M12	Art. no. 350140
18	1	Screw	A4	M6S M12x50H	Art. no. 351050
17	2	Washer	A4	10,5x20x2	Art. no. 350550
16	1	Nut locking	A4	M6NM M10	Art. no. 350330
15	1	Screw	A4	M6S M10x80H	Art. no. 351010
14	2	Washer	A4	8,4x16x1,6	Art. no. 350540
13	1	Nut locking	A4	M6NM M8	Art. no. 350320
12	1	Screw	A4	M6S M8x90D	Art. no. 1001398
11	1	Weld socket	AISI 316L	2"	L=56
10	1	Pipe	AISI 316L	Ø60,3	L=45
9	1	Lever arm for actuator			Drw. no. 4514
8	1	Sprocket wheel			Drw. no. 5511
7	1	Shaft			Drw. no. 5513
6	1	Lever arm			Drw. no. 5512
5	14	Nozzle outer complete			Drw. no. 4373
4	A	Nozzle inner complete			Drw. no. 4373
3	1	Swivel bracket			Drw. no. 4691
2	1	Swivel			Drw. no. 4692
1	1	Backwash Header			Drw. no. 4619

Part no.	Qty	Name			Material	Mod.-nr Blank Dimension Mass	Remark	
Designer	Drawn by	Copy	Controlled by	Stand.	Approved	Scale	Replaces	Replaced by
Per	JJ			ISO 2768-m		1 : 8		
HYDROTECH		Assembly Backwash Header						Date 2011-06-27
		HSF2600-1F					Draw. no. 4620 Edition D	

D	Sprocket wheel modified	2014-03-11	KÅS	
C	Spray bar position changed	2013-03-25	JJ	189
B	Drawing updated	2011-10-17	JJ	
Ed.	Change and/or message no.	Date	Made by	c-m no.



5	0-4	Spacer for axial bearing, t=8					Drw. no. 2941	
4	0-2	Spacer for axial bearing, t=5					Drw. no. 5137	
3	0-2	Spacer for axial bearing, t=3					Drw. no. 3141	
2	3	Clamp bar					Drw. no. 4864	
1	1	Rubber lip for inlet					Drw. no. 2931	
Pos no	Qty	Name			Material	Dimension	Remark	
Designer	Drawn by	Projection method	Controlled by	Stand.	Approved	Scale	Sheet size	Replaced by
	JJ			ISO 2768-m		1 : 10	A3	
			Inlet seal assembly				Sheet	Date
							1 / 1	
			HSF2200				Draw. no.	Edition
				5151		A		

SERVICE

HSF2612/30-1F-2F

Checklist / service report

To be done on every visit

☐

Check backwash pressure

Remarks:

☐

Check panels for damage

Remarks:

☐

Visually inspect the inside of the unit

Remarks:

☐

Check the nozzles for clogging

Remarks:

☐

Lubricate all grease points of the unit

Remarks:

☐

Check drive chain tension

Remarks:

☐

Visually inspect the outside of the unit, clean if needed

Remarks:

SERVICE

HSF2612/30-1F-2F

To be done on yearly visit

☐

Check oil condition in drive unit according to separate manual

Remarks:

☐

Check drum bearings for wear

Remarks:

☐

Check shaft gaskets for wear

Remarks:

☐

Check inlet gasket for wear

Remarks:

☐

Check support wheels for wear

Remarks:

SERVICE

HSF2612/30-1F-2F

To be done every five years

Replace the parts from service kit

OK

<input type="checkbox"/>	Axial bearing
<input type="checkbox"/>	Slide bearing for drum
<input type="checkbox"/>	Rubber sealing shaft
<input type="checkbox"/>	V-sealing, V-180A
<input type="checkbox"/>	Seal for influent bearing
<input type="checkbox"/>	Backwash wheel shaft Ø50x50
<input type="checkbox"/>	Wheel to backwash unit 26
<input type="checkbox"/>	Manometer 0-16 bar 1/4" SI
<input type="checkbox"/>	Rubber lip seal for inlet
<input type="checkbox"/>	Guiding blocks drum
<input type="checkbox"/>	Sprocket wheel motor Z=14
<input type="checkbox"/>	Strainer, O-sealing 180x4,0 NBR70
<input type="checkbox"/>	Strainer, cartridge 200 µm
<input type="checkbox"/>	Swivel

Check and if needed replace strategic and critical parts

OK

Replaced

<input type="checkbox"/>	Backwash nozzles	Qty: _____
<input type="checkbox"/>	Filter panels	Qty: _____
<input type="checkbox"/>	Sprocket wheel drum Z=42	Qty: _____
<input type="checkbox"/>	Drive chain	Qty: _____
<input type="checkbox"/>	Backwash pump	Qty: _____
<input type="checkbox"/>	SEW drive unit	Qty: _____

Remarks:
