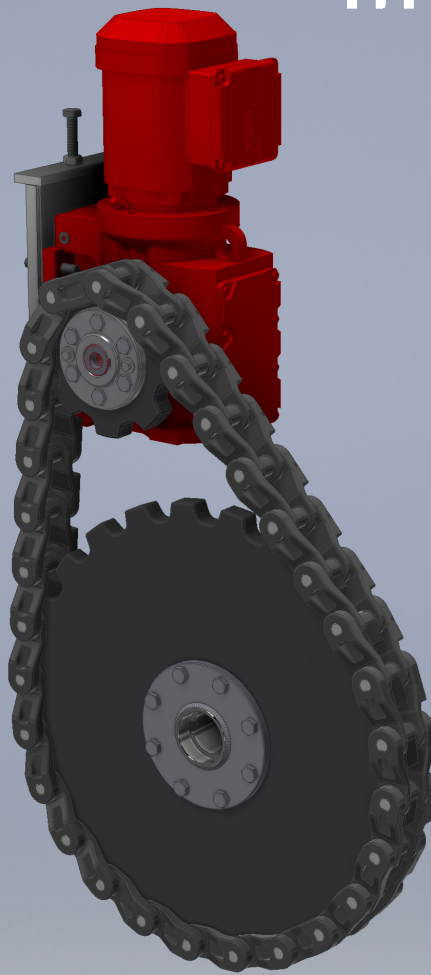


HYDROTECH



Drive upgrade instruction, HT78 chain
Drumfilter HDF 16 & 20 - series

Revised: 2020-09-30

TABLE OF CONTENT

1. INTRODUCTION	3
2. INSTRUCTIONS	5

1. INTRODUCTION

This manual is containing step by step instructions for drive upgrade to the drive with HT78 chain. Note that the filter displayed in all figures is the HDF1607-2S. The principles for HDF1601-06 and HDF2005-07 are the same but the pictures displayed in this manual might differ slightly from these variants.

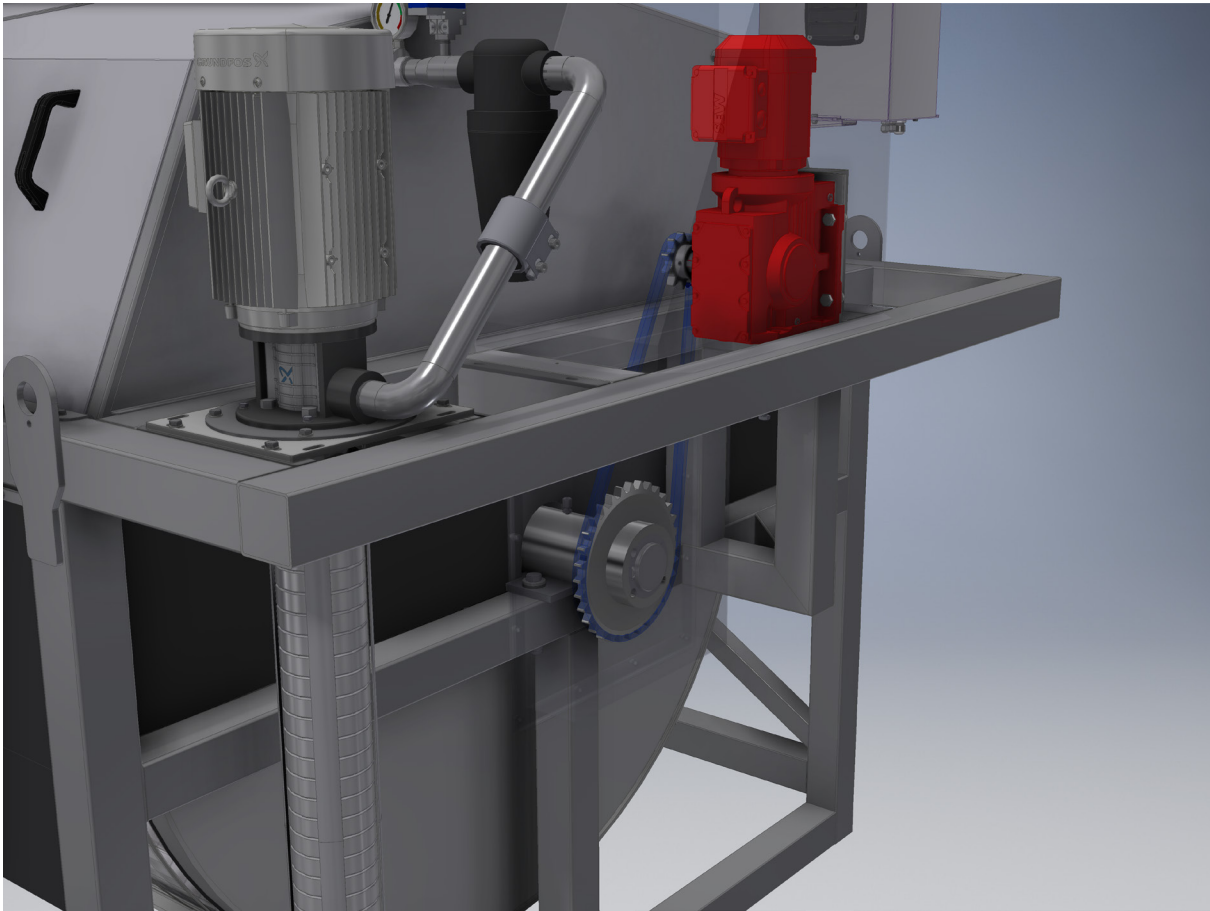


Figure 1.1 Drive assembly prior to upgrade, with steel chain.

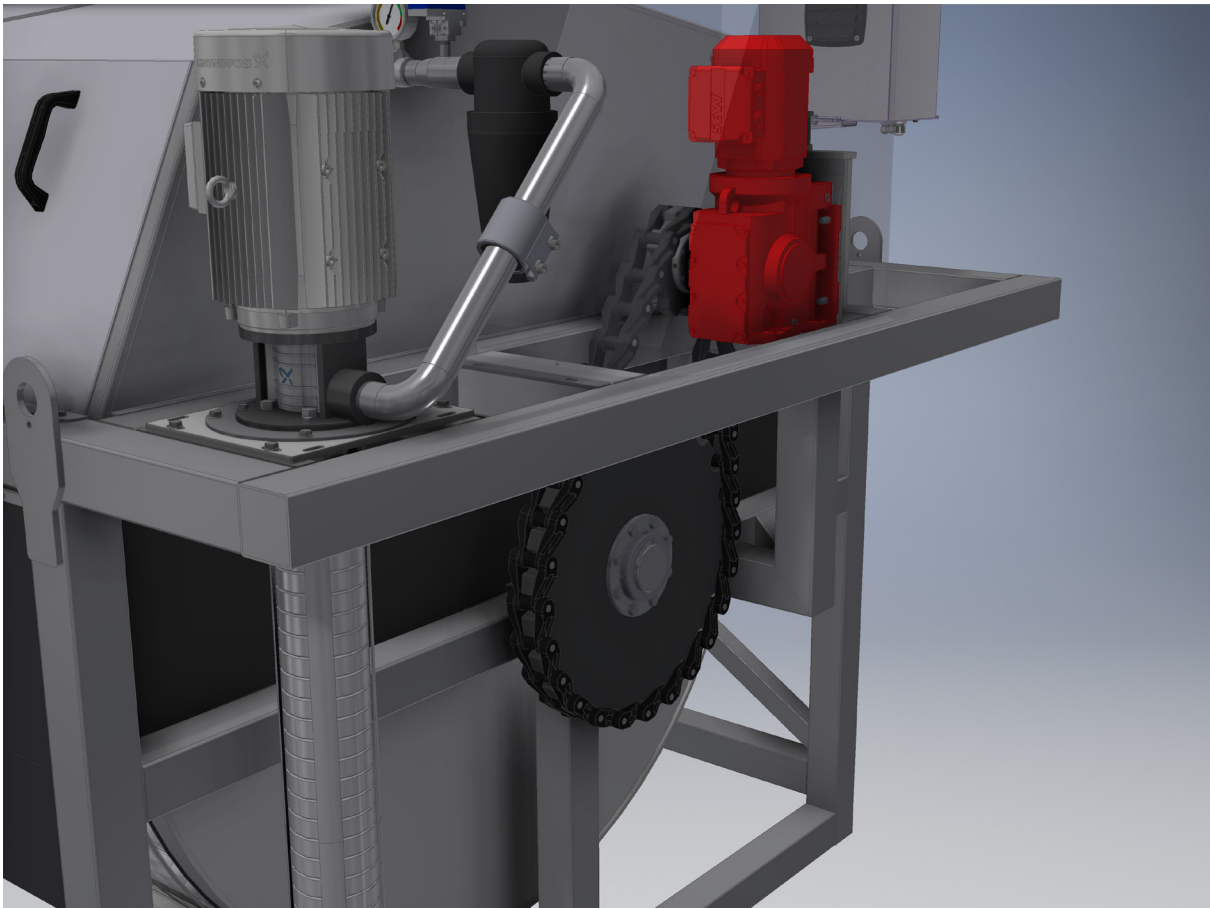


Figure 1.2 Drive assembly after upgrade, with HT78 plastic chain.

2. INSTRUCTIONS

Follow the instructions below when upgrading the drive.

1. Cut the power and make precautions to ensure that the filter is unable to start until the upgrade is completed.
2. Drain the water from the basin.
3. Remove motor cover by undoing the two screws holding it to the filter frame (see figure 2.1).

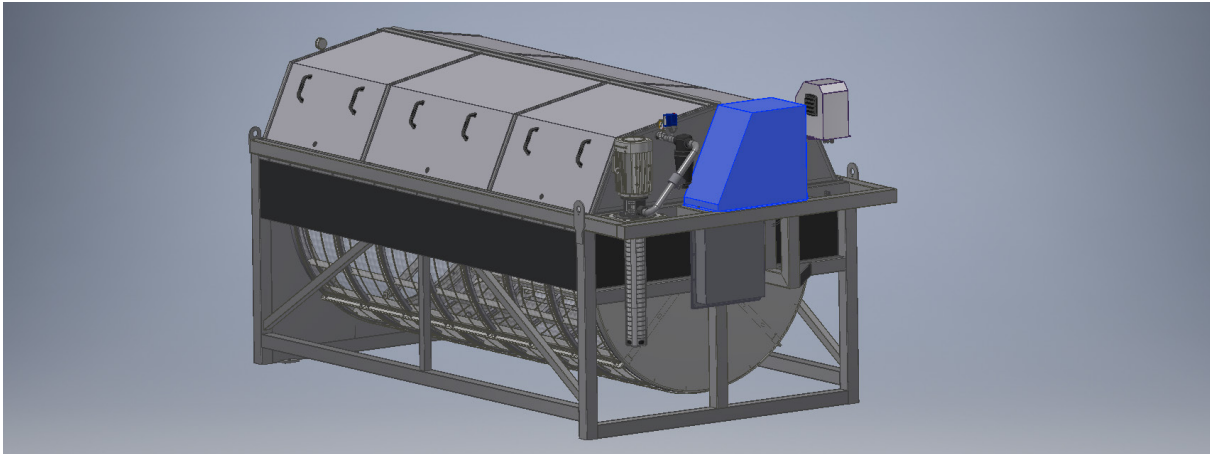


Figure 2.1 Removing the motor cover.

4. Remove the chain tray to get access to the shaft and bearing house (see figure 2.2).

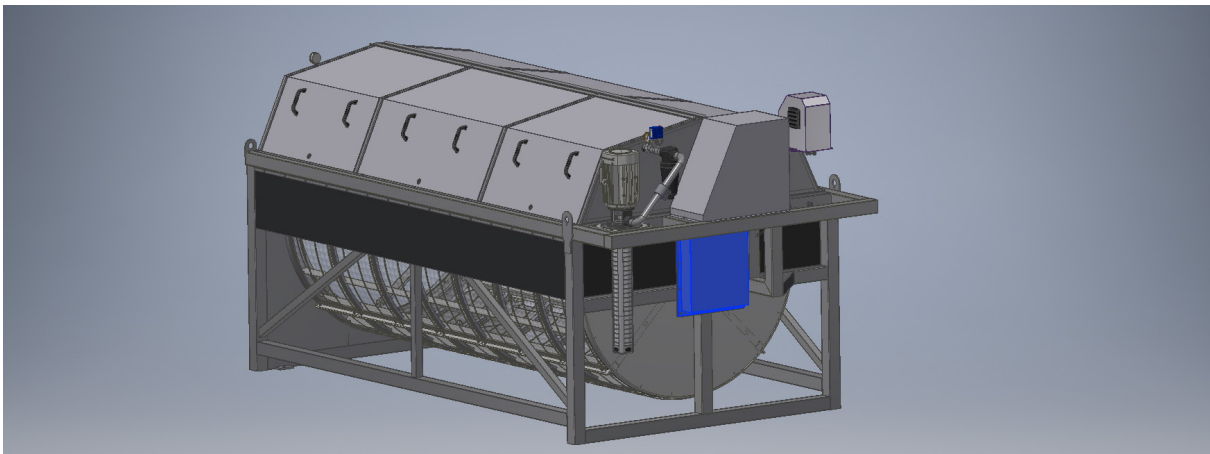


Figure 2.2 Removing the chain tray.

5. Lower the motor to the lowest possible position to get some slack on the drive chain.
6. Open the chain lock and remove the drive chain.
7. Remove the motor for easier access.
8. Remove the old tapered lock and sprocket from the shaft to accommodate the new hub (see figure 2.3).
9. Mount the new hub on the shaft. Don't tighten the set screws on the hub yet, we will align the

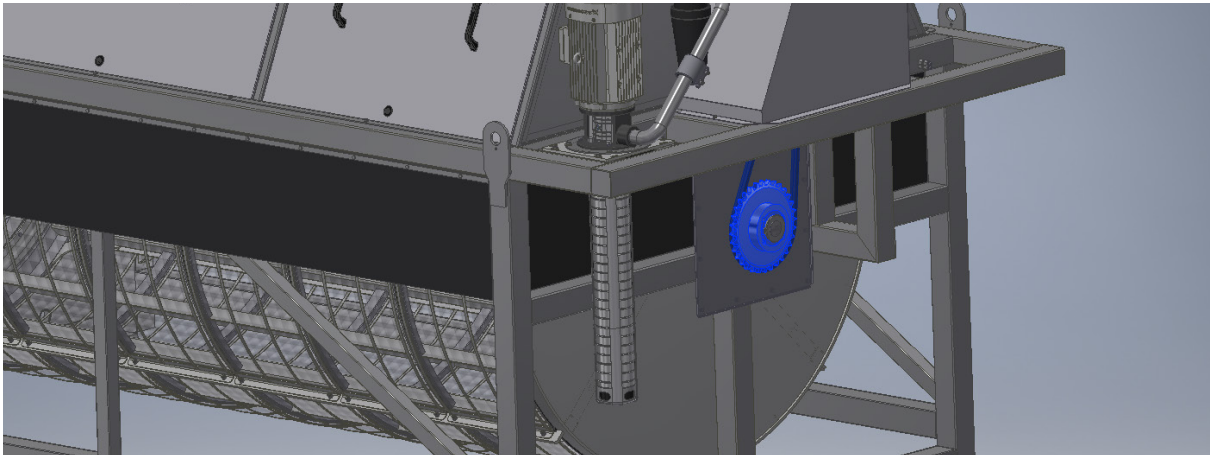


Figure 2.3 Removing steel sprocket and tapered lock.

drive in a later stage.

10. Mount the plastic sprocket and the plate that is retaining the sprocket. Fasten the M10x60 screws with 40 Nm of torque.
11. Remove the old sprocket from the drive shaft and mount the new hub and plastic sprocket. Fasten the M10x50 screws with 40 Nm of torque.
12. Mount the motor again and ensure that it is in its lowest position.
13. Mount the new plastic chain.
14. Adjust the hub on the main shaft and the hub on the motor shaft so that the chain is aligned vertically. Fasten the set screws on both hubs to lock the position of the sprockets.
15. Fasten the screws on both hubs to lock the chains position.
16. Lift the motor until a satisfying chain tension is achieved.
17. Mount the motor cover.
18. Resume normal operations.

HYDROTECH

Hydrotech AB
A Veolia Solutions & Technologies Company
Mejselgatan 6
235 32 Vellinge
Sweden

Telephone: +46 (0)40 - 42 95 30
Fax: +46 (0)40 - 42 95 31
E-mail: mailbox@hydrotech.se
Webpage: www.hydrotech.se
Copyright © All rights reserved