

SERVICE

HDF1608/10-2S-1AS

Thank you for choosing a Hydrotech filter.

It is a trustworthy machine that will run for a long time with minimum care and service. Indeed, any mechanical equipment requires annual maintenance in order to operate efficiently and with as little down time as possible. This is also the case with your Hydrotech Drumfilter HDF1600.

On the next page, you will find all the parts that we recommend to replace every 4 to 6 years. Most part of these items is standard on all sizes, apart from a few articles that may be different from one size filter to another.

If you don't have the possibility to do the maintenance yourself, Hydrotech will be pleased to send you a service offer or recommend a reliable technician that can assist you.

Apart from the periodic maintenance mentioned in the **Operation & Maintenance manual** we recommend a large service every fifth year where at least all parts in the **5 year service kit** are replaced.

To order spare parts or a service from Hydrotech and also to get the latest updated prices, please contact Hydrotech at services@hydrotech.se.



Veolia Water Technologies AB

Hydrotech



Mejselgatan 6, 235 32 Vellinge, Sweden
Phone +46 40 42 95 30, Fax. +46 40 42 95 31
mailbox@hydrotech.se
www.hydrotech.se

SERVICE

HDF1608/10-2S-1AS

5 year service kit

Art. N°	N° on drawing	Description	Qty
1006083	20635-B pos.6	Shaft sealing radial	4
1003467	20635-B pos.7	Roller bearing	2
1004125	20635-B pos.8	Retaining spring	2
424040	20635-B pos.9	Key steel	1
1004130	20635-B pos.10	O-sealing	2
425540	2317-E pos.4	Slide bearing Ø35	2
1001387	2317-E pos.5	Slide bearing Ø35 (L=17 mm)	2
425720	2317-E pos.9	Spacer 70/35.2x3.0 mm	4
1002089	2317-E pos.11	Support wheel type 14	4
425710	2317-E pos.18	Spacer 60/36x3 mm	2
1003764	20794-A pos.2	Rubber lip inlet seal	1
420180	20716-A pos.5	Chain wheel Z = 10	1
1001262	20716-A pos.6	Chain wheel Z = 32	1
1001275	20716-A pos.7	Cone to chain wheel	1
1022984	20716-A pos.8	Drive chain	1
420120	20716-A pos.9	Chain lock	1
1010967	On backwash pipe	Manometer	1

Veolia Water Technologies AB

Hydrotech



Mejselgatan 6, 235 32 Vellinge, Sweden
 Phone +46 40 42 95 30, Fax. +46 40 42 95 31
mailbox@hydrotech.se
www.hydrotech.se

SERVICE

HDF1608/10-2S-1AS

Strategic spare parts

Art.N°	N° on drawing	Description	Qty
		Nozzles	5/revolution
		Panels	5/revolution
278040		Cartridge for strainer	1
	20635-B pos.1 & 2	Shaft and bearing house	1

Critical spare parts

Art. N°	N° on drawing	Description	Qty
	20716-A	Drive unit	1
		Backwash pump	1

Definitions:

5 year service kit:

Parts to be changed after 5 years of operation

Strategic spare parts:

Parts with short lead time (always on Hydrotech stock) which are vital for the operation of the unit.

Critical spare parts:

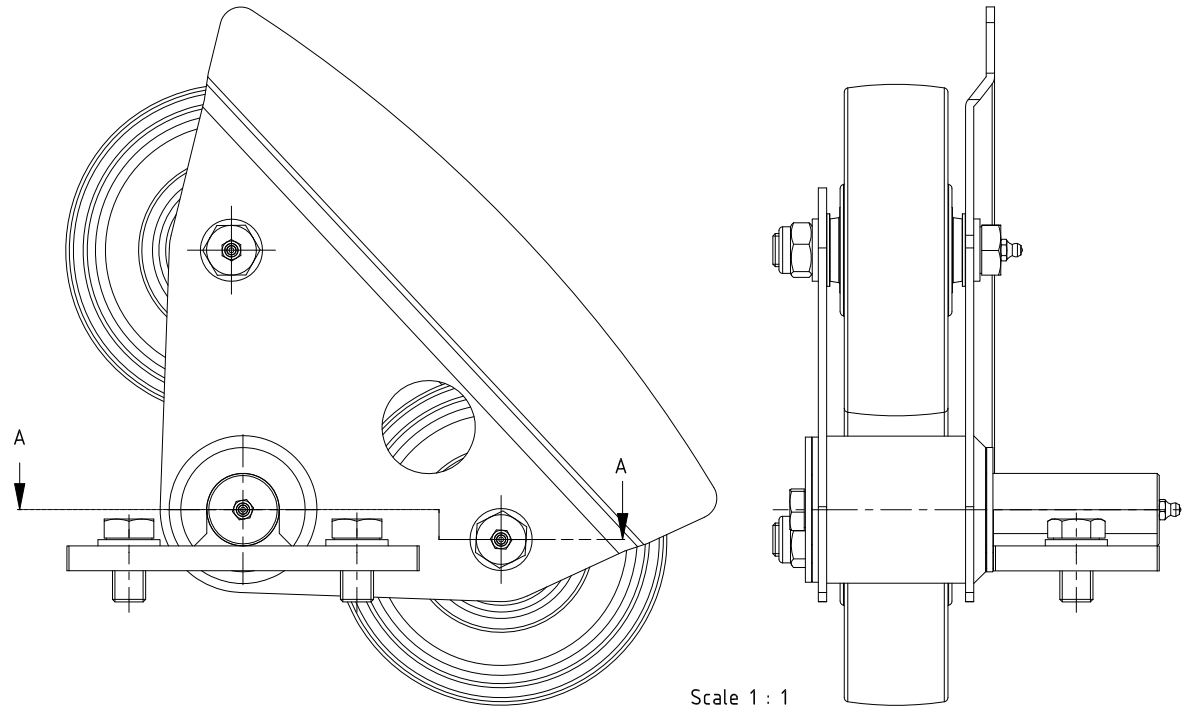
Parts with long lead time which are vital for the operation of the unit, contact Hydrotech for precise delivery time.

Veolia Water Technologies AB

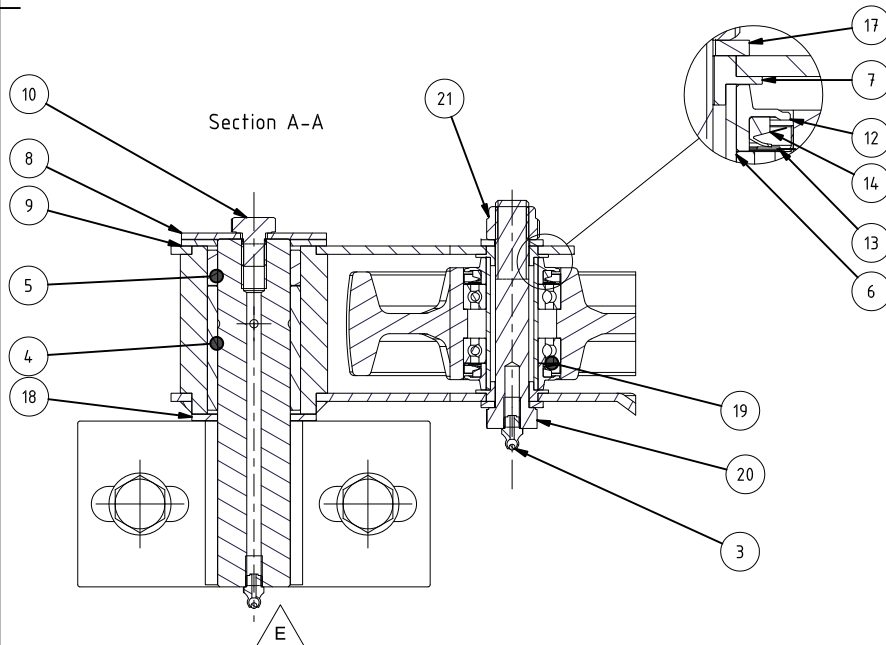
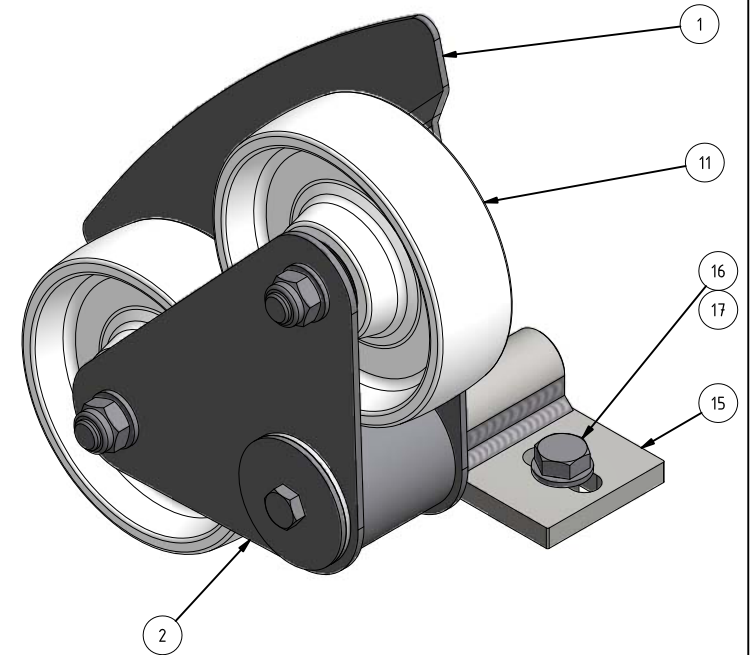
Hydrotech



Mejselgatan 6, 235 32 Vellinge, Sweden
Phone +46 40 42 95 30, Fax. +46 40 42 95 31
mailbox@hydrotech.se
www.hydrotech.se



Scale 1 : 1

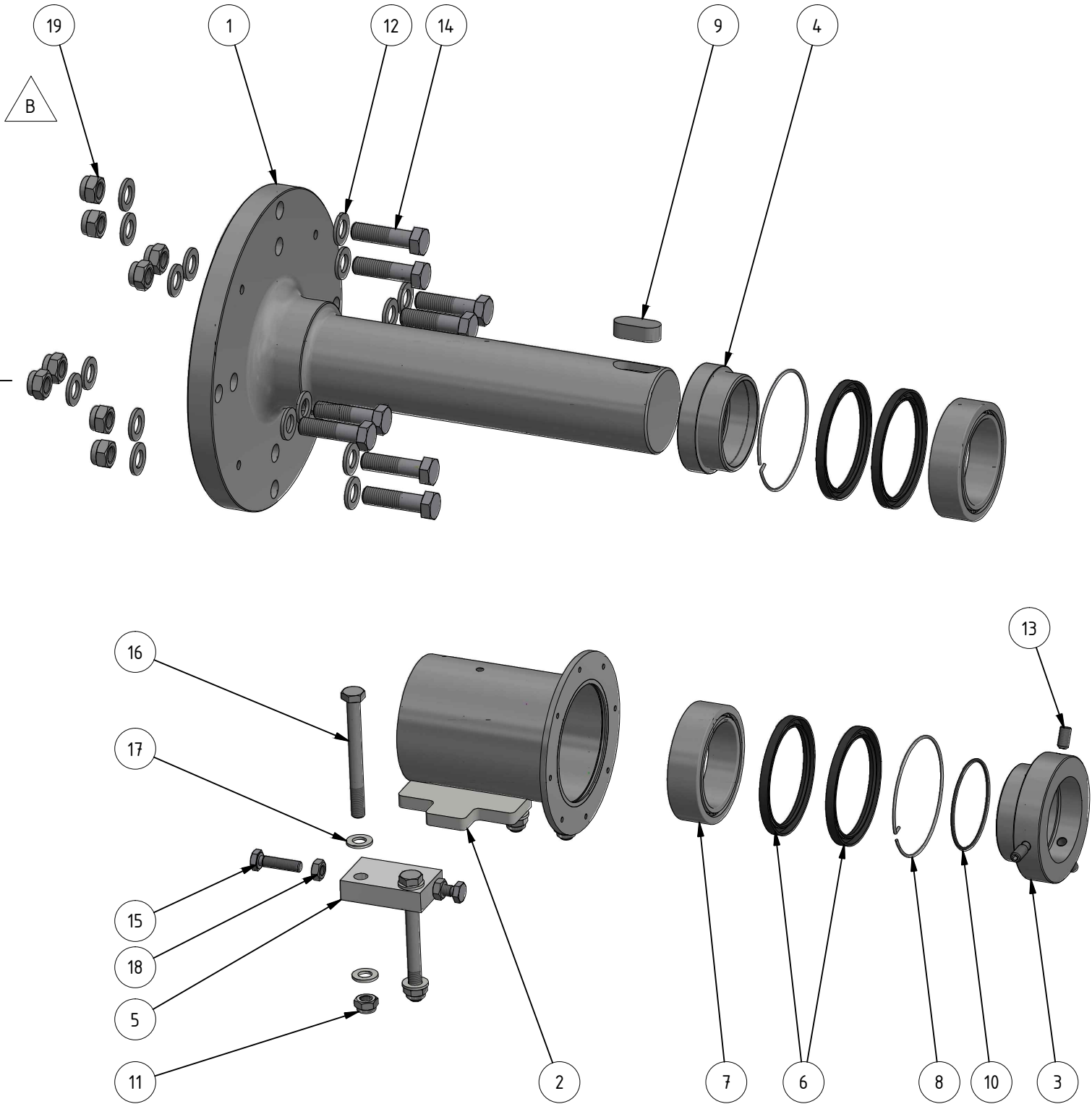
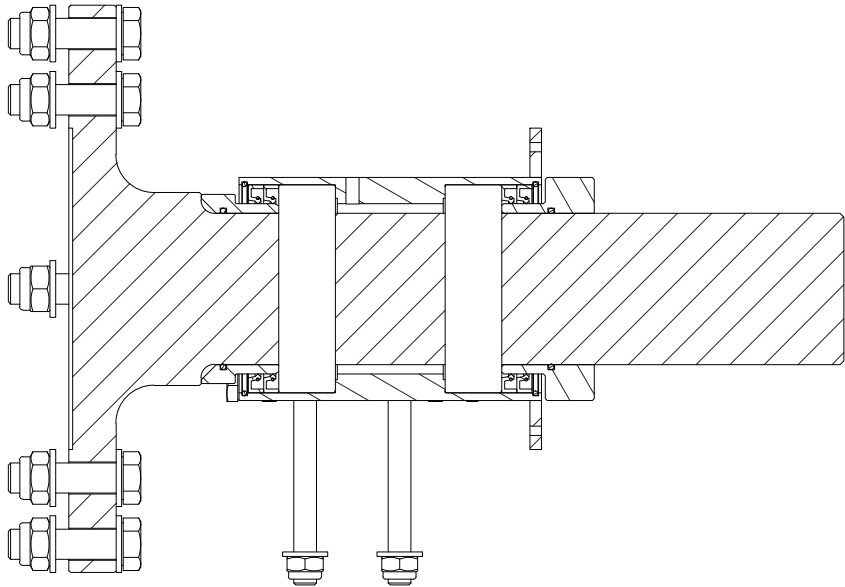


21	2	Nut locking	A4	M6NM M16	Art. no. 350350
20	2	Bolt for grease nipple	A4		Drw. no. 4571
19	4	Ball bearing	AISI 304	6005	Colson (Art.no. 1001606)
18	1	Spacer	Acetal	Ø 60x35,2x3	Drw. no. 1091
17	6	Washer	A4	RB 17x30x3	Art.no. 350570
16	2	Bolt	A4	M6S M16x30	Art.no. 351630
15	1	Bearing bracket			Drw. no. 1089 / Drw. no. 4813 (for 1600-1G)
14	4	Radial sealing			Colson (Art.no. 1001606)
13	4	Support for radial sealing	AISI 316L		Colson (Art.no. 1001606)
12	4	Support for radial sealing	Plastic, Black		Colson (Art.no. 1001606)
11	2	Support wheel	Plastic, White	160 x 50	Colson (Art.no. 1001606)
10	1	Bolt	A4	M6S M12x16	Art.no. 351023
9	1	Spacer	Acetal	Ø 70x35,2x3	Drw. no. 1091
8	1	Washer		Ø 70x13x3	Drw. no. 1091
7	4	Shaft end			Drw. no. 2282
6	2	Shaft tube			Drw. no. 2282
5	1	Slide bearing Wolf	ZX100	Ø 45/35 L=17	Art.no. 1001387
4	1	Slide bearing Wolf	ZX100	Ø 45/35 L=60	Art.no. 425540
3	3	Grease Nipple	AISI 316L	M8x1	Art.no. 352310
2	1	Boogie support gable			Drw. no. 1092
1	1	Boogie gable with bearing house		Left + Right	Drw. no. 4583

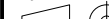
Part no.	Qty	Name	Material	Mod.-nr Blank Dimension Mass	Remark
Designer	Drawn by	Copy	Controlled by	Stand.	Approved
	EmS			ISO 2768-m	
Scale 1:2,5					Replaces
Boogie assembly (type 14) (Right shown) Drumfilter HDF 1600-1G 1605-07, 2005-07					Replaced by
HYDROTECH					Date 110201
Draw. no. 2317 Edition E					

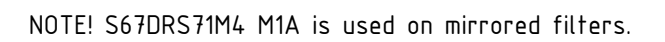
E	Central greasing for bearing br.	160120	FT	
Ed.	Change and/or message no.	Date	Made by	c-m no.

Ed.	Change and/or message no.	Rev date	Made by	c-m no.
B	Pos 19 added, Pos 14 was M16x50	2018-03-19	KÅS	-



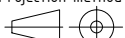

19	8	Nut locking	A4	M6NM M16	Art. no. 350350
18	4	Nut	A4	M6M M10	Art. no. 350130
17	8	Washer	A4	13x24x2,5	Art. no. 350560
16	4	Screw	Bumax 88 (A4)	M6S M12x120D	Art. no. 1018546
15	4	Screw	A4	M6S M10x40H	Art. no. 350980
14	8	Screw	A4	M6S M16x60D	Art. no. 351660
13	3	Set Screw	A4	MS6SS M10x20	Art. no. 352160
12	16	Washer	A4	17x30x3,0	Art. no. 350570
11	4	Nut locking	A4	M6NM M12	Art. no. 350340
10	2	O-sealing	EPDM	79,5x3,0	Art. no. 1004130
9	1	Key steel		22x14x45	Art. no. 424040
8	2	Reataining spring		Type 80	Drw. no. 2407
7	2	Roller bearing		4916A	Art. no. 1003467
6	4	Shaft sealing radial		90x110x8	Art. no. 1006083
5	2	Holder for bearing house			Drw. no. 20637
4	1	Spacer			Drw. no. 4507
3	1	Retaining collar			Drw. no. 2399
2	1	Bearing house	304/316L/2205		Drw. no. 20636
1	1	Drive Shaft			Drw. no. 20382

Pos no	Qty	Name			Material	Dimension	Remark	
Designer	Drawn by	Projection method	Controlled by	Stand.	Approved	Scale	Sheet size	Replaced by
	KAS			ISO 2768-m			A3	
HYDROTECH			Center shaft and bearing assembly				Sheet	Date
							1 / 1	2016-01-25
			Drumfilter HDF1608-10				Draw. no.	Edition
				20635	B			



Assy Drive
Drumfilter HDF1608-10 2S



3	23	Screw		A4	M6S M6x16H	Art. no. 350780		
2	1	Rubber lip for inlet				Drw. no. 2412		
1	1	Clamp bar				Drw. no. 20793		
Pos no	Qty	Name		Material	Dimension	Remark		
Designer	Drawn by	Projection method	Controlled by	Stand.	Approved	Scale	Sheet size	Replaced by
	KAS			ISO 2768-m			A3	
			Inlet seal assembly Drumfilter HDF1608-10			Sheet		Date
						1 / 1		2016-12-14
						Draw. no.	Edition	
						20794	A	

SERVICE

HDF1608/10-2S-1AS

To be done on every visit

☐

Check backwash pressure

Remarks:

☐

Check panels for damage

Remarks:

☐

Visually inspect the inside of the unit

Remarks:

☐

Check the nozzles for clogging

Remarks:

☐

Lubricate all grease points of the unit

Remarks:

☐

Check drive chain tension

Remarks:

☐

Visually inspect the outside of the unit, clean if needed

Remarks:

Veolia Water Technologies AB

Hydrotech



Mejselgatan 6, 235 32 Vellinge, Sweden
Phone +46 40 42 95 30, Fax. +46 40 42 95 31
mailbox@hydrotech.se
www.hydrotech.se

SERVICE

HDF1608/10-2S-1AS

To be done on yearly visit

☐

Check oil condition in drive unit according to separate manual

Remarks:

☐

Check drum bearings for ware

Remarks:

☐

Check shaft gaskets for ware

Remarks:

☐

Check inlet gasket for ware

Remarks:

☐

Check support wheels for ware

Remarks:

Veolia Water Technologies AB

Hydrotech



Mejselgatan 6, 235 32 Vellinge, Sweden
Phone +46 40 42 95 30, Fax. +46 40 42 95 31
mailbox@hydrotech.se
www.hydrotech.se

SERVICE

HDF1608/10-2S-1AS

To be done every five years

Replace the parts from service kit

OK

<input type="checkbox"/>	Shaft sealing radial
<input type="checkbox"/>	Roller bearing
<input type="checkbox"/>	Retaining spring
<input type="checkbox"/>	Key steel
<input type="checkbox"/>	O-sealing
<input type="checkbox"/>	Slide bearing Ø35
<input type="checkbox"/>	Slide bearing Ø35 (L=17 mm)
<input type="checkbox"/>	Spacer 70/35.2x3.0 mm
<input type="checkbox"/>	Support wheel type 14
<input type="checkbox"/>	Spacer 60/36x3 mm
<input type="checkbox"/>	Rubber lip inlet seal
<input type="checkbox"/>	Chain wheel Z = 10
<input type="checkbox"/>	Chain wheel Z = 32 1 cone
<input type="checkbox"/>	Cone to chain wheel
<input type="checkbox"/>	Drive chain
<input type="checkbox"/>	Chain lock
<input type="checkbox"/>	Manometer

Check and if needed replace strategic and critical parts

OK

<input type="checkbox"/>	Nozzles	Qty: _____
<input type="checkbox"/>	Panels	Qty: _____
<input type="checkbox"/>	Drive shaft	
<input type="checkbox"/>	Drive unit	
<input type="checkbox"/>	Backwash pump	

Remarks:

Veolia Water Technologies AB

Hydrotech



Mejselgatan 6, 235 32 Vellinge, Sweden
Phone +46 40 42 95 30, Fax. +46 40 42 95 31
mailto:mailbox@hydrotech.se
www.hydrotech.se