

# SERVICE

## HSF2202/12-1C-2C

Thank you for choosing a Hydrotech filter.

It is a reliable machine that will run for a long time with minimum care and service. Indeed, any mechanical equipment requires annual maintenance in order to operate efficiently and with as little down time as possible. This is also the case with your Hydrotech Discfilter HSF2202/12, 1C or 2C.

On the next pages, you will find recommendations for maintenance, parts to change and drawings.

If you don't have the possibility to do the maintenance yourself, Hydrotech will be pleased to send you a service offer or recommend a reliable technician that can assist you.

Apart from the periodic maintenance mentioned in the **Operation & Maintenance manual** we recommend a large service every fifth year where at least all parts in the **5 year service kit** are replaced.

To order spare parts or a service from Hydrotech and also to get the latest updated prices, contact Hydrotech at [services@hydrotech.se](mailto:services@hydrotech.se).

# SERVICE

## HSF2202/12-1C-2C

### 5 year service kit

Art. N°	N° on drawing	Description	Qty	Version
424040	5856-B pos.10	Key steel 22x14x45 mm	1	
1004130	5856-B pos.6	O-sealing 79,5x3.0 EPDM	2	
1004125	5856-B pos.9	Lock ring Ø122x2.5	2	
1003467	5856-B pos.8	Roller bearing INA SL01 4916A	2	
1006083	5856-B pos.7	Shaft sealing radial 90x110x8	4	
1020529	5856-B pos.3	Pulley for spraybar drive	1	
1021141	5860-C pos.10	Belt pulley to backwash header	1	
1006351	5860-C pos.9	Belt, moving back wash header	1	
1000808	5860-C pos.7	Bearing for spray water pipe	1	
1012730	5860-C pos.3	Swivel connection, 2"	1	
1010967	On spray bar	Manometer 0-16 bar 1/4" SI	1	
1008197	5860-C pos.8	Bearing bracket spray bar	1	Only HSF2212
1007999	20447-A pos.1	Rubber lip seal HSF1700	1	
426355	4665-A	Support wheel type 9	2	
420380	5943-B pos.4	Chain wheel 1 1/4" 10, Ø45H7	1	
420140	5943-B pos.8	Chain lock 1 1/4"	1	
1001275	5943-B pos.6	Cone to chain wheel 3020-Ø80	1	

### Parts only valid for 1C tank version

Art. N°	N° on drawing	Description	Qty
1021218	5943-B pos.7	Chain 1 1/4" Rex simplex	1
1001271	5943-B pos.5	Chain wheel Z=32 1 1/4"	1

### Parts only valid for 2C frame version

Art. N°	N° on drawing	Description	Qty
1021722	20161-A pos.8	Chain 1 1/4" Rex simplex	1
1011915	20161-A pos.6	Chain wheel Z=32 1 1/4"	1

# SERVICE

## HSF2202/12-1C-2C

### Strategic spare parts

Art. N°	N° on drawing	Description	Qty	Version
	5860-C pos.11	Backwash nozzles	14/disc	
	5840-C pos.12	Filter panel, with seal	28/disc	
	5856-B pos.1	Drum shaft	1	Only -1C tank version
	20160-A pos.1	Drum shaft	1	Only -2C frame version
	5856-B pos.2	Bearing house	1	Only -1C tank version
	20160-A pos.2	Bearing house	1	Only -2C frame version

### Critical spare parts

Art. N°	N° on drawing	Description	Qty
		Backwash pump	1
		Drive gear/motor	1

### Definitions:

#### **5 year service kit:**

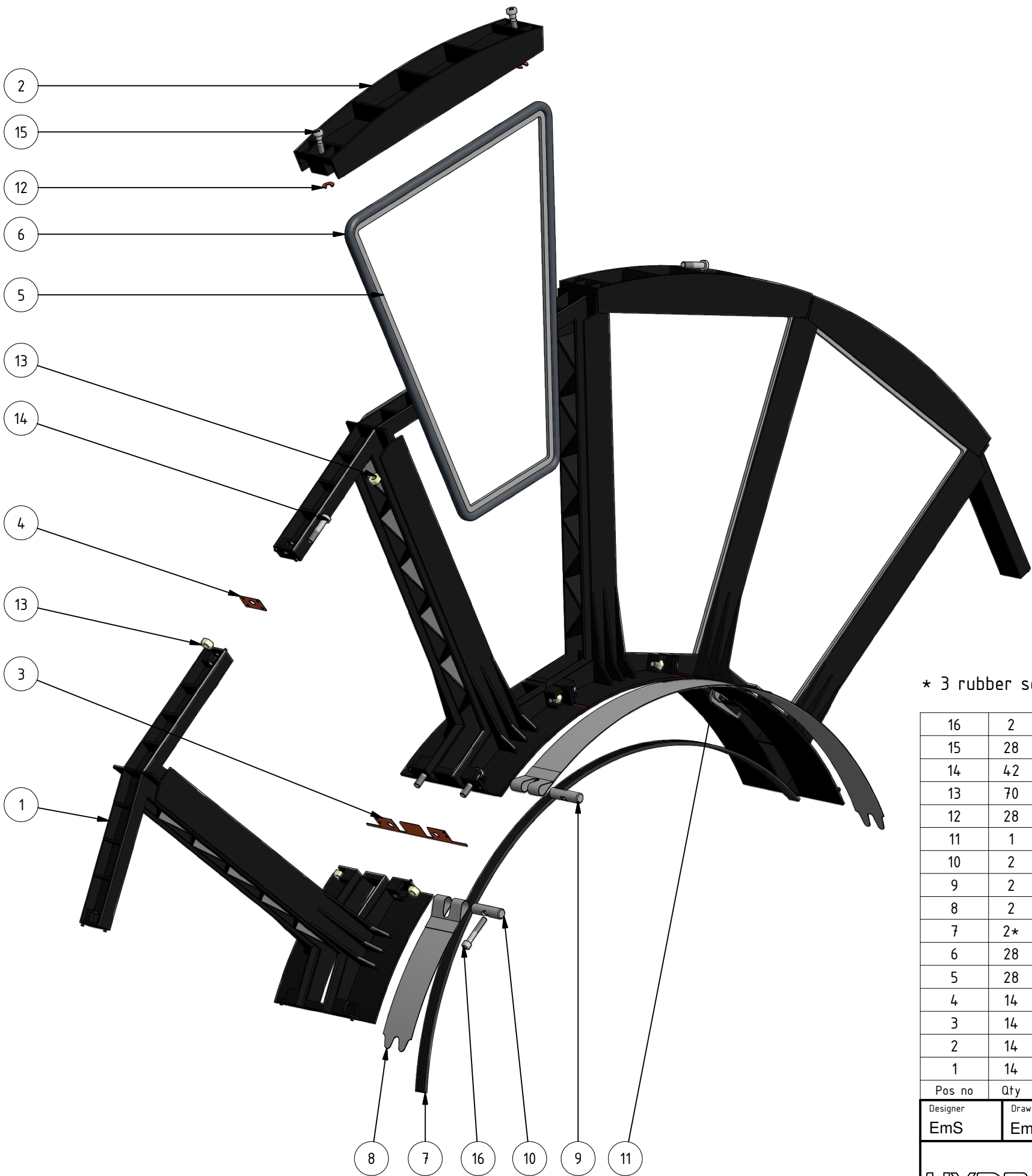
Parts to be changed after 5 years of operation

#### **Strategic spare parts:**

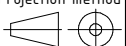

Parts with short lead time (always on Hydrotech stock) which are vital for the operation of the unit.

#### **Critical spare parts:**

Parts with long lead time which are vital for the operation of the unit, contact Hydrotech for precise delivery time.



\* 3 rubber seals, 30x5 (pos 7) on the first and last filter disc.

16	2	Screw	A4	MC6S M8x50D	Art. no. 1007397										
15	28	Screw	A4	MC6S M10x32	Art. no. 1013873										
14	42	Screw	A4	MC6S M10x45	Art. no. 1014444										
13	70	Nut		M6M M10	Art. no. 1005609										
12	28	Clip			Art. no. 1013497										
11	1	Rotation stop			Art. no. 1012718										
10	2	Pin for strap, Ø8.5			Art. no. 1007401										
9	2	Pin for strap, M8			Art. no. 1007396										
8	2	Strap for filter segment			Art. no. 1006344										
7	2*	Rubber seal		30x5	Art. no. 1007731										
6	28	Filter panel seal													
5	28	Filter panel													
4	14	Segment seal, Upper			Art. no. 1006534										
3	14	Segment seal, Lower			Art. no. 1006533										
2	14	Cover for filtersegment			Art. no. 1014989										
1	14	Filter segment			Art. no. 1014988										
Pos no	Qty	Name		Material	Dimension	Remark									
Designer EmS		Drawn by EmS		Projection method 		Controlled by	Stand. ISO 2768-m	Approved	Scale	Sheet size A3	Replaced by				
						Filter disc assembly						Sheet	Date		
						Exploded view						1 / 1		2007-04-26	
						HSF2200						Draw. no. 3460		Edition B	

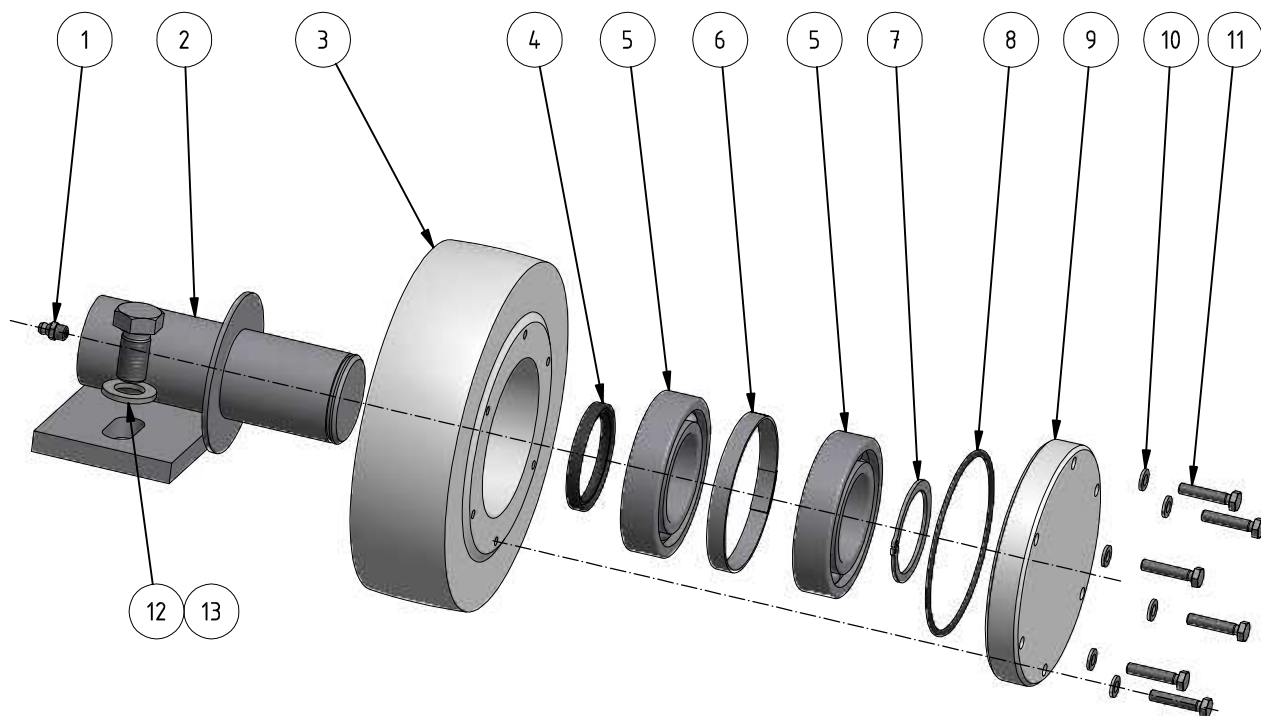
Ed.

Change and/or message no.

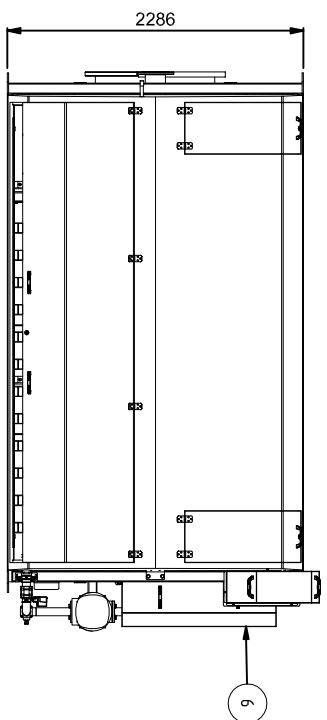
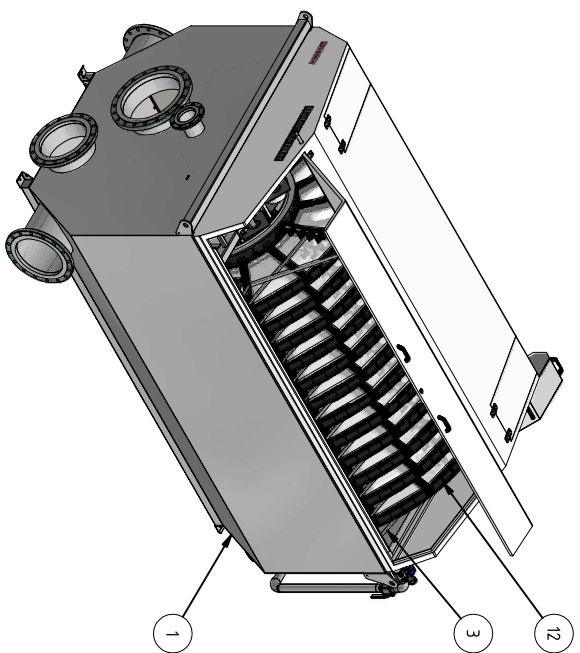
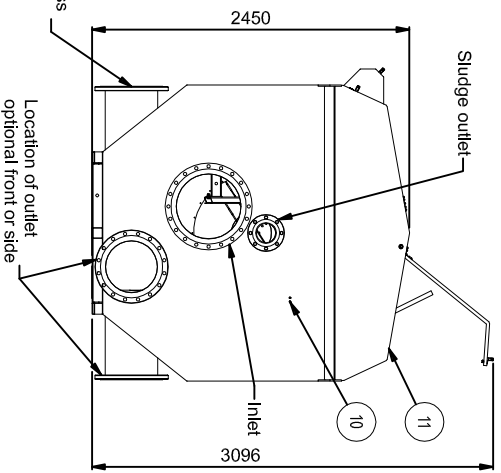
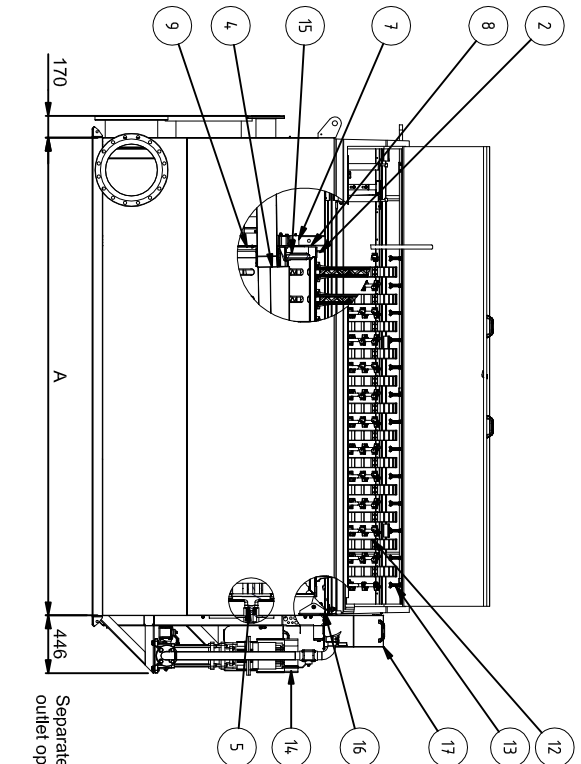
Date

Made by

c-m no.



13	2	Screw	A4	M6S M16x30H	Art. no. 351630			
12	2	Washer	A4	17x30x3,0	Art. no. 350570			
11	6	Bolt	A4	M6S M6x30	Art. no. 350797			
10	6	Washer	A4	RB 6,4x12x1,6	Art. no. 350530			
9	1	Cap support wheel	Acetal		Drw. no. 1714			
8	1	O-ring	EPDM	99,5x3	Art. no. 425200			
7	1	Lock ring	AISI 316L	SGA50	Art. no. 423255			
6	1	Spacer	AISI 316L		Drw. no. 2123			
5	2	Ball bearing		6210	Art. no. 426530			
4	1	Shaftsealing umanchett	Rubber	50x60x7	Art. no. 425088			
3	1	Support wheel	Acetal		Drw. no. 1426			
2	1	Bearing bracket			Drw. no. 1425			
1	1	Grease Nipple	AISI 316L	M8x1	Art.no. 352310			
Part no.	Qty	Name		Material	Mod.-nr Blank Dimension Mass	Remark		
Designer EmS	Drawn by EmS	Copy	Controlled by	Stand. ISO 2768-m	Approved	Scale	Replaces	Replaced by
HYDROTECH			Support wheel assembly Exploded veiw Discfilter HSF 21					Date 20110419
							Draw. no. 4665 Edition A	



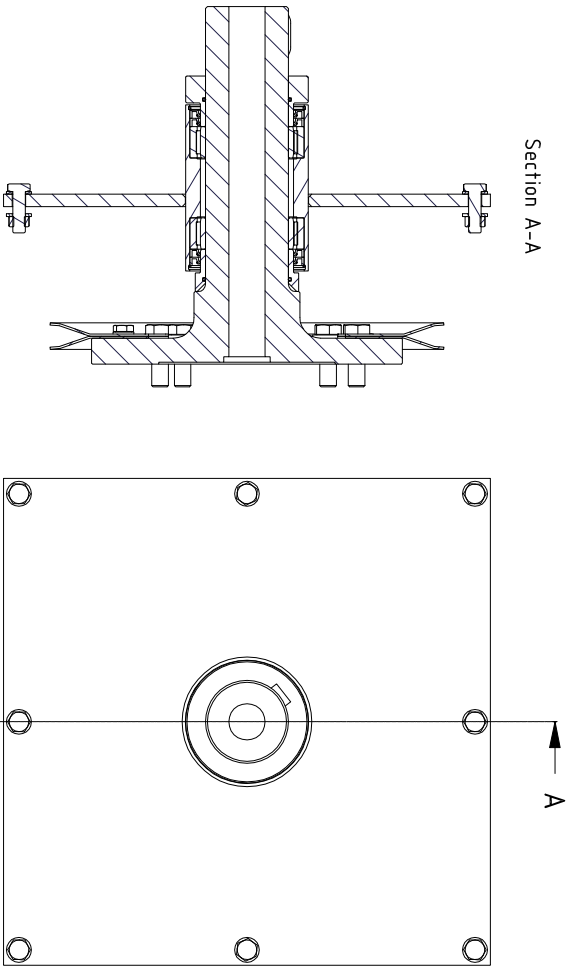
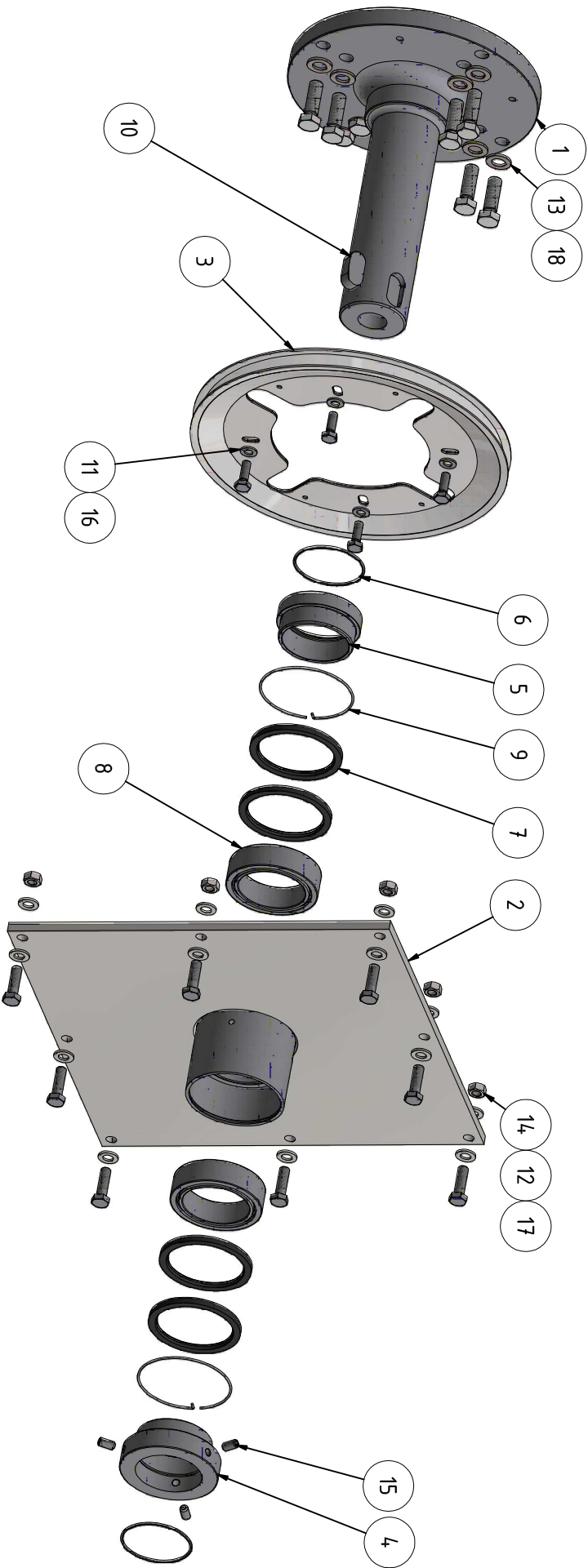
Type	A	B	C	D
HSF2202	1586	1	0	0
HSF2204	2006	1	0	0
HSF2206	2426	0	1	0
HSF2208	2846	0	1	0
HSF2210	3266	0	0	1
HSF2212	3686	0	0	1

Ed	Change and/or message no	Rev date	Made by	c-m no
B	High pressure washer added	2015-12-02	JJ	
C	Table removed, inlet seal assembly added	2016-02-16	JJ	

17	1	High pressure washer	Optional	Drw. no. 4488
16	1	Drum lifting device rear	Optional	Drw. no. 5946
15	1	Drum lifting device front	Optional	Drw. no. 5945
14	D	Piping CR15	Optional	Drw. no. 5864
14	C	Piping CR10	Optional	Drw. no. 20078
14	B	Piping CR5	Optional	Drw. no. 20079
13	1	Chemical spray bar	Optional	Drw. no. 5344
12	12	HSF2200 Disc		Drw. no. 3460
11	1	GRP Cover		Drw. no. 3479, 3269
10	1	Assy Lubrication		Drw. no. 5944
9	1	Inlet seal assembly		Drw. no. 20447
8	2	Wheel protection set	Drw. no. 0719	Art. no. 1001952
7	2	Support wheel assembly	Drw. no. 4665	Art. no. 1002307
6	1	Assy Drive		Drw. no. 5943
5	1	Assy Center shaft and bearing		Drw. no. 5856
4	1	Assy Solidstray		Drw. no. 5865
3	1	Assembly spray bar		Drw. no. 5860
2	1	Filter Drum		Drw. no. 5857
1	1	Assembly Tank		Drw. no. 5841

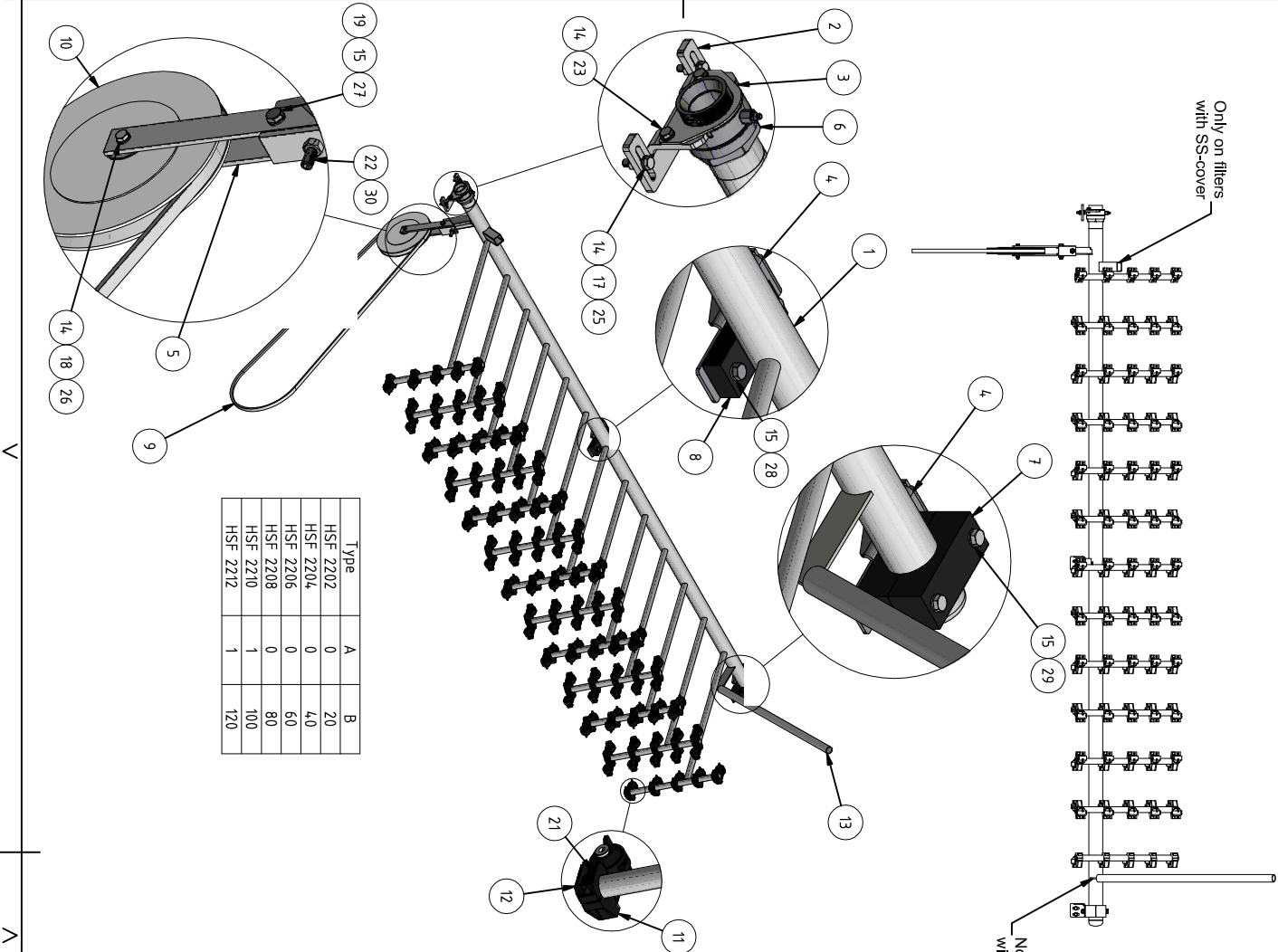
Pos no	Qty	Name	Material	Dimension	Remark				
Designer	Drawn by	Projection method	Controlled by	Stand.	Approved	Scale	Sheet size	Sheet	Date
Ems	Ems			ISO 2768-m		1:40	A3	1 / 1	2015-05-26

HYDROTECH		General Assembly drawing		Draw. no.	5840	Edition	C
		Discfilter HSF2200 1C					



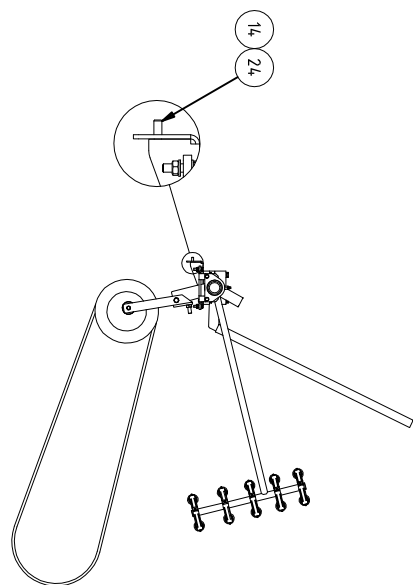
18	8	Screw	A4	M6S M16x50H	Art. no. 10104,17
17	8	Screw	A4	M6S M12x40H	Art. no. 35104,0
16	4	Screw	A4	M6S M10x30H	Art. no. 35097,0
15	3	Set screw	A4	MS6S M10x20	Art. no. 35216,0
14	8	Nut	A4	M6M M12	Art. no. 35014,0
13	8	Washer	A4	17x30x3,0	Art. no. 35057,0
12	16	Washer	A4	13x24x2,5	Art. no. 35056,0
11	4	Washer	A4	10,5x20x2	Art. no. 35055,0
10	1	Key steel		22x16x4,5	Art. no. 42404,0
9	2	Retaining spring		Type 80	Drw. no. 24,07
8	2	Roller bearing		4916A	Art. no. 100346,7
7	4	Shaft sealing radial		90x110x8	Art. no. 100608,3
6	2	O-sealing	EPDM	79,5x3,0	Art. no. 100413,0
5	1	Spacer			Drw. no. 4507
4	1	Retaining collar			Drw. no. 2399
3	1	Pully for spraybandle			Drw. no. 5855
2	1	Bearing house			Drw. no. 5858
1	1	Drive Shaft HSF21			Drw. no. 4504
Pos no	Qty	Name	Material	Dimension	Remark
Designer	Drawn by	Projection method	Controlled by	Stand	Approved
Ems	Ems	ISO 2768-m	ISO 2768-m	1:5	Scale
HYDROTECH					
Assy Center shaft and bearing					
Discfilter HSF2200 1C					
Sheet size					
A3					
Sheet					
1 / 1					
Date					
2015-05-11					
Draw no.					
5856					
Edition					
B					





Only on filters  
with SS-cover

Not on filters  
with SS-cover



Fd.	Change and/or message no.	Rev date	Made by
B	Pos. 9,22,28 & 29 changed pos.30 added	2015-11-16	FMS
C	Option for SS-cover added	2016-07-05	JJ

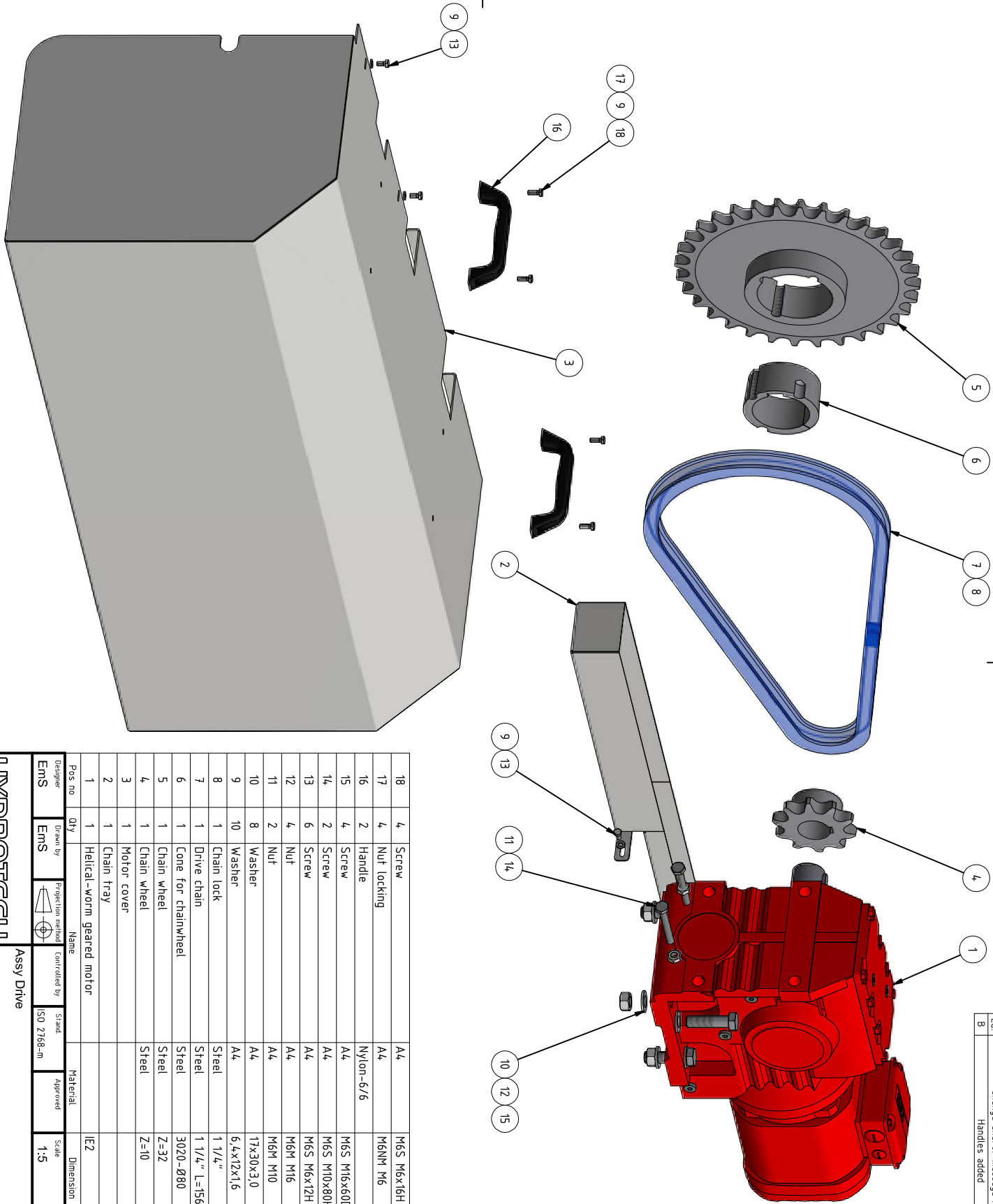
30	1	Nut	A4	M6M M12	Art. no. 3501140
29	2	Screw	A4	M6S M10x100D	Art. no. 3501017
28	2xA	Screw	A4	M6S M10x40H	Art. no. 3509980
27	1	Screw	A4	M6S M10x60H	Art. no. 1001821
26	1	Screw	A4	M6S M8x60H	Art. no. 3509910
25	2	Screw	A4	M6S M8x30H	Art. no. 3508880
24	2 + 2xA	Screw	A4	M6S M8x20H	Art. no. 350870
23	2	Screw	A4	M6S M8x16H	Art. no. 350860
22	1	Screw	A4	M6S M8x12H	Art. no. 1014405
21	B + 10	Screw	A4	HTP 4,2x30	Art. no. 1014078
19	3 + 2A	Nut locking	A4	M6NM M10	Art. no. 350330
18	1	Nut	A4	M6M M8	Art. no. 350320
17	2	Nut	A4	M6M M8	Art. no. 350120
15	6 + 4A	Washer	A4	10.5x20x2	Art. no. 350550
14	10 + 2xA	Washer	A4	8,4x16x1,6	Art. no. 350540
13	1	Pipe	AISI 316L	Ø32 x 2	L = 850
12	10	Nozzle clamp		3/4"	Art. no. 2502 Art. no. 1005304
11	B	Nozzle unit - YSN 6504			Art. no. 1015734
10	1	Pulley			Art. no. 2638
9	1	Drive belt			Art. no. 1006351
8	A	Mid support bearing f. spray bar			Art. no. 2821
7	2	Bearing for spray bar, upper part			Art. no. 1672
6	1	Swivel			Art. no. 3942
5	1	Lever			Art. no. 5849
4	A+1	Support for spray bar			Art. no. 2811
3	1	Swivel bracket	AISI316L/2205		Art. no. 1006556 / 1018685
2	1	Swivel holder			Art. no. 5947
1	1	Spray bar			Art. no. 5859

Pos. n	Qty	Name	Material	Dimension	Remark
1	1	Spray bar			

Designer	Drawn by	Projection method	Control by	Scale	Sheet size	Sheet no.	Date	Revised by
Ems	Ems			1:20	A3	5660	1 / 1	2015-04-30

HYDROTECH	Assembly spray bar	Discfilter HSF2200 1C 2C	Draw no.	5660	Revision	C
-----------	--------------------	--------------------------	----------	------	----------	---



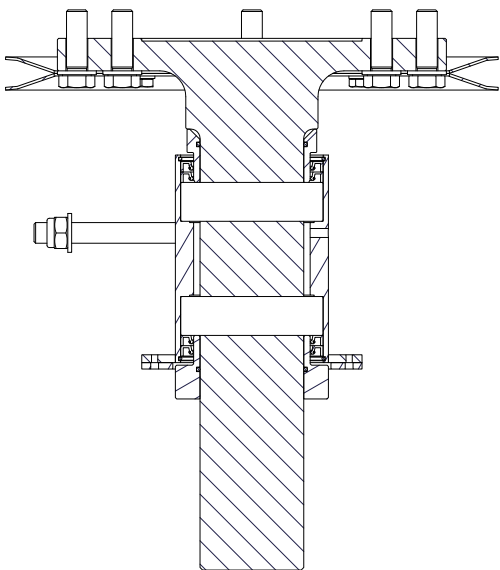
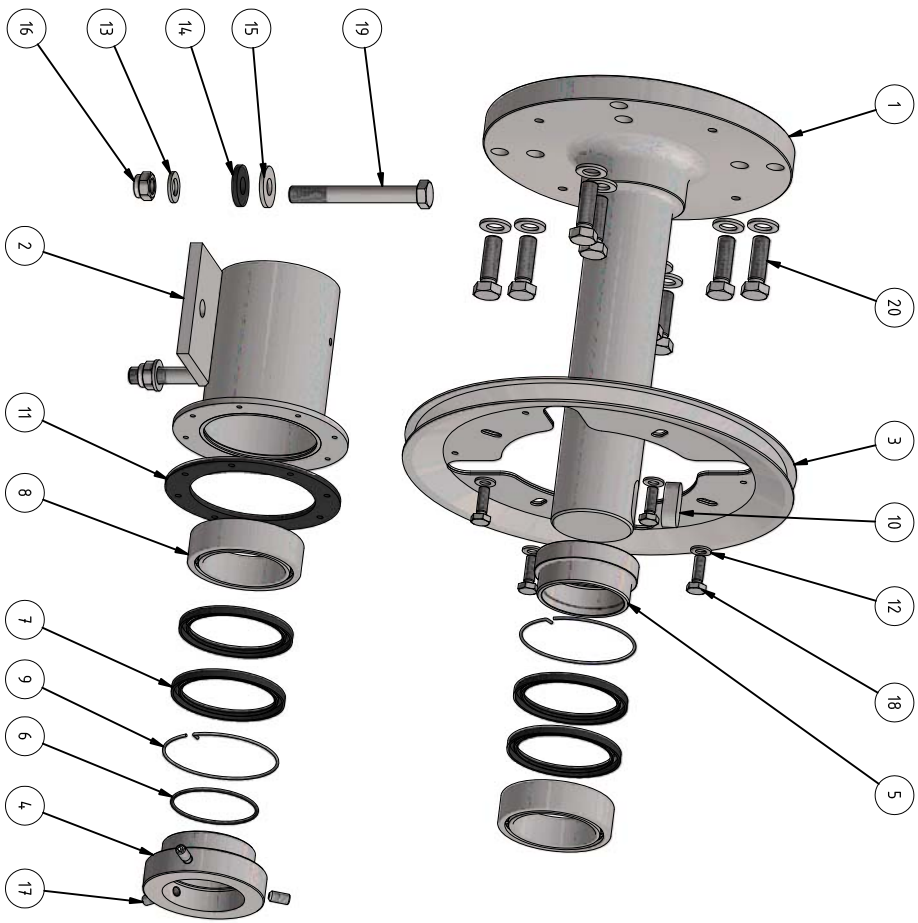


Ed	Change and/or message no.	Rev date	Made by	C-m no
B	Handles added	2015-11-03		

Pos no	Qty	Name	Material	Dimension	Remark
1	1	Helical-worm geared motor	IE2		S770RE90M4, M18
2	1	Chain tray			Drw. no. 5942
3	1	Motor cover			Drw. no. 5869
4	1	Chain wheel	Steel	Z=10	Art. no. 420380
5	1	Chain wheel	Steel	Z=32	Art. no. 1001271
6	1	Cone for chainwheel	Steel	3020-Ø80	Art. no. 1001275
7	1	Drive chain	Steel	1 1/4" L=1560	Art. no. 1021218
8	1	Chain lock	Steel	1 1/4"	Art. no. 420140
9	10	Washer	A4	6,4x12x1,6	Art. no. 350530
10	8	Washer	A4	17x30x3,0	Art. no. 350570
11	2	Nut	A4	M6M M10	Art. no. 350130
12	4	Nut	A4	M6M M6	Art. no. 350150
13	6	Screw	A4	M6S M6x12H	Art. no. 350770
14	2	Screw	A4	M6S M10x80H	Art. no. 351010
15	4	Screw	A4	M6S M16x60D	Art. no. 351660
16	2	Handle	Nylon-6/6		Art. no. 427500
17	4	Nut locking	A4	M6NM M6	Art. no. 350310
18	4	Screw	A4	M6S M6x16H	Art. no. 350780

Designer	Drawn by	Projection method	Controlled by	Stand	Approved	Scale	Sheet size	Sheet	Date
Ems	Ems			ISO 2768-m		1:5	A3	1 / 1	2015-05-13

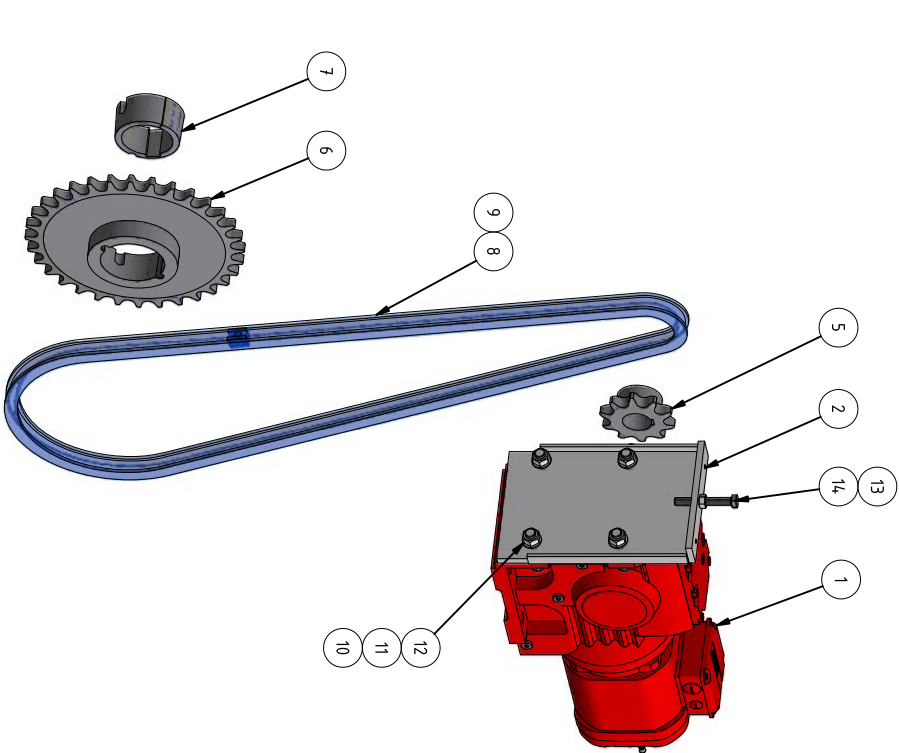
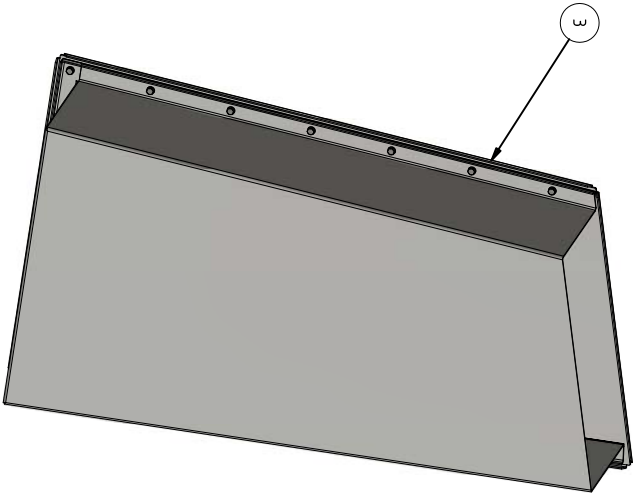
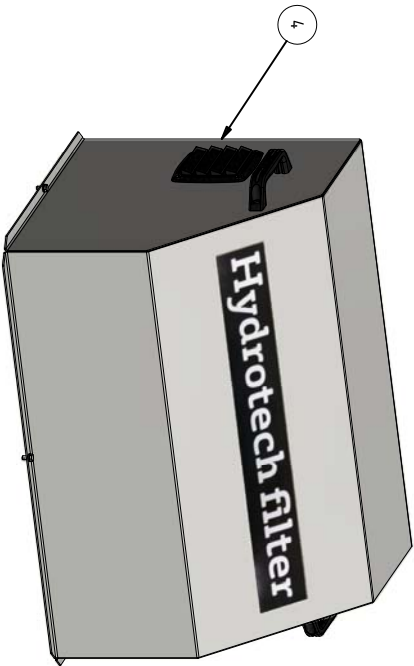
HYDROTECH	Assy Drive	Discfilter HSF2200 1C	Draw. no.	5943	Edition	B
-----------	------------	-----------------------	-----------	------	---------	---



20	8	Screw	A4	M6S M16x50H	Art. no. 1010417
19	2	Screw	Bumax 88 (A4)	M6S M16x130D	Art. no. 1014557
18	4	Screw	A4	M6S M10x30H	Art. no. 350970
17	3	Set screw	A4	MS6SS M10x20	Art. no. 352160
16	2	Nut locking	A4	M6NM M16	Art. no. 350350
15	2	Washer	S32205	Ø 16,5x40x4	Drw. no. 4675
14	2	Washer	Rubber	Ø 17x40x5	Drw. no. 4677
13	10	Washer	A4	17x30x3,0	Art. no. 350570
12	4	Washer	A4	10,5x20x2	Art. no. 350550
11	1	Seal	EPDM foam		Drw. no. 2307_p2
10	1	Key steel		22x14x45	Art. no. 424040
9	2	Retaining spring		Type 80	Drw. no. 2407
8	2	Roller bearing		4916A	Art. no. 1003467
7	4	Shaft sealing radial		90x110x8	Art. no. 1006083
6	2	O-sealing	EPDM	79,5x3,0	Art. no. 1004130
5	1	Spacer			Drw. no. 4507
4	1	Retaining collar			Drw. no. 2399
3	1	Pulley for spraybar drive			Drw. no. 5855
2	1	Bearing house			Drw. no. 2366
1	1	Drive Shaft			Drw. no. 20382
Pos no	Qty	Name	Material	Dimension	Remark

Pos no	Qty	Name	Material	Dimension	Remark
Designer	Drawn by	Projection method	Controlled by	Stand	Approved
KAS	KAS		ISO 2768-m		
Assy Center shaft and bearing					
Discfilter HSF2200 2C					
Sheet		A3		Date	
1 / 1		2016-01-25		Edition	
20160				A	

HYDROTECH



14	1	Screw	A4	M6S M12x90H	Art. no. 1015075
13	1	Nut	A4	M6M M12	Art. no. 350140
12	4	Nut	A4	M6M M16	Art. no. 350150
11	4	Nut locking	A4	M6NM M16	Art. no. 350350
10	8	Washer	A4	17x30x3.0	Art. no. 350570
9	1	Chain lock	Steel	1 1/4"	Art. no. 420140
8	1	Drive chain	Steel	1 1/4" L=24.70	Art. no. 1021722
7	1	Cone for chainwheel	Steel	3020-Ø80	Art. no. 1001275
6	1	Chain wheel	Steel	Z=32, reverse	Art. no. 1011915
5	1	Chain wheel	Steel	Z=10	Art. no. 420380
4	1	Motor cover			Drw. no. 20373
3	1	Chain trough			Drw. no. 20163
2	1	Adjustment plate for motor			Drw. no. 3714
1	1	Helical-worm geared motor			S7DRN90S4, M18
Pos no	Qty	Name	Material	Dimension	Remark
Designer	Drawn by	Projection method	Controlled by	Stand	Sheet size
Ems	KAS			ISO 2768-m	A3
HYDROTECH			Assy Drive	Scale	1:8
Discfilter HSF2200 2C			Approved	Dimension	1:8
Draw. no.	1 / 1	Sheet	20161	2016-01-21	Replaced by
			A		



6	2	Washer	A4	6,4x18x1,6	Art. no. 350532
5	17	Washer	A4	6,4x12x1,6	Art. no. 350530
4	19	Screw	A4	M6S M6x16H	Art. no. 350780
3	2	Clamp bar			Drw. no. 5863
2	1	Clamp bar			Drw. no. 4864
1	1	Rubber lip for inlet			Drw. no. 2931

Pos no	Qty	Name	Material	Dimension	Remark
Disigner	Drawn by	Proposition method	Controlled by	Stand	Approved
Ems	JJ			ISO 2768-m	1 : 5

HYDROTECH		Inlet seal assembly		Sheet	
Discfilter HSF2200 1C, 2C				A3	
				1 / 1	
20447				2016-12-14	
				A	

# SERVICE

## HSF2202/12-1C-2C

### Checklist / service report

#### To be done on every visit

☐

Check backwash pressure

Remarks:

---

☐

Check panels for damage

Remarks:

---

☐

Visually inspect the inside of the unit

Remarks:

---

☐

Check the nozzles for clogging

Remarks:

---

☐

Lubricate all grease points of the unit

Remarks:

---

☐

Check drive chain tension

Remarks:

---

☐

Visually inspect the outside of the unit, clean if needed

Remarks:

---

# SERVICE

## HSF2202/12-1C-2C

### To be done on yearly visit

☐

Check oil condition in drive unit according to separate manual

Remarks:

---

☐

Check drum bearings for wear

Remarks:

---

☐

Check shaft gaskets for wear

Remarks:

---

☐

Check inlet gasket for wear

Remarks:

---

☐

Check support wheels for wear

Remarks:

---

# SERVICE

## HSF2202/12-1C-2C

### To be done every five years

Replace the parts from service kit

OK

<input type="checkbox"/>	Key steel 22x14x45 mm
<input type="checkbox"/>	O-sealing 79,5x3.0 EPDM
<input type="checkbox"/>	Lock ring Ø122x2.5
<input type="checkbox"/>	Roller bearing INA SL01 4916A
<input type="checkbox"/>	Shaft sealing radial 90x110x8
<input type="checkbox"/>	Pulley for spraybar drive
<input type="checkbox"/>	Belt pulley to backwash header
<input type="checkbox"/>	Belt, moving back wash header
<input type="checkbox"/>	Bearing for spray water pipe
<input type="checkbox"/>	Swivel connection, 2"
<input type="checkbox"/>	Manometer 0-16 bar 1/4" SI
<input type="checkbox"/>	Bearing bracket spray bar
<input type="checkbox"/>	Rubber lip seal HSF1700
<input type="checkbox"/>	Support wheel type 9
<input type="checkbox"/>	Chain wheel 1 1/4" 10, Ø45H7
<input type="checkbox"/>	Chain lock 1 1/4"
<input type="checkbox"/>	Cone to chain wheel 3020-Ø80
<input type="checkbox"/>	Chain 1 1/4" Rex simplex L=2470
<input type="checkbox"/>	Chain wheel Z=32 1 1/4"

Check and if needed replace strategic and critical parts

OK

Replaced

<input type="checkbox"/>	Backwash nozzles	Qty: _____
<input type="checkbox"/>	Filter panels	Qty: _____
<input type="checkbox"/>	Driveshaft	Qty: _____
<input type="checkbox"/>	Bearing house	Qty: _____
<input type="checkbox"/>	SEW drive unit	Qty: _____
<input type="checkbox"/>	Backwash pump	Qty: _____

Remarks:

---

---